

PARTI DI RICAMBIO

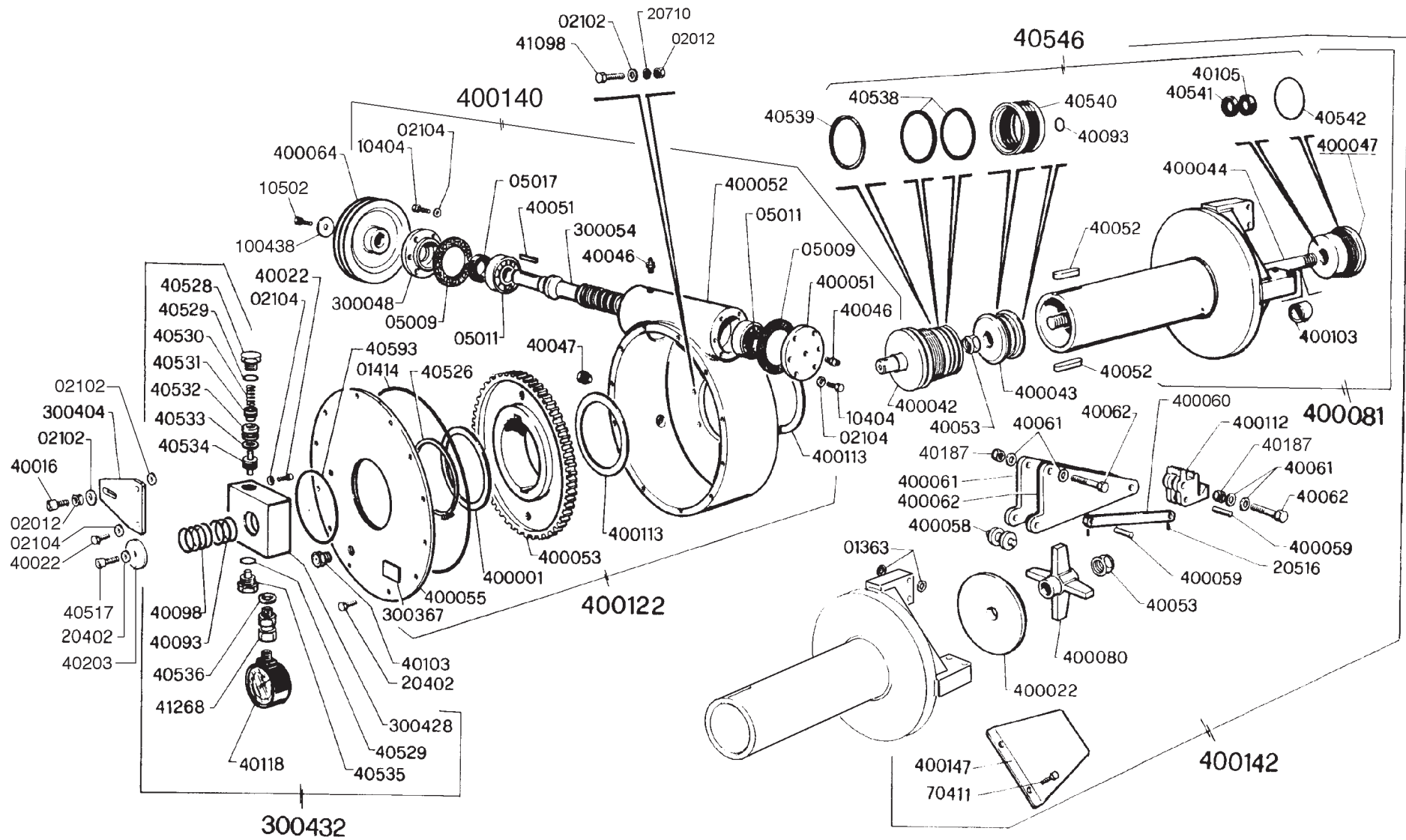
SPARE PARTS
PIÈCES DE RECHANGE
ERSATZTEILEN
REPUESTOS
PEÇAS DE RECÂMBIO
RESERVDELAR
ЗАПАСНЫЕ ЧАСТИ

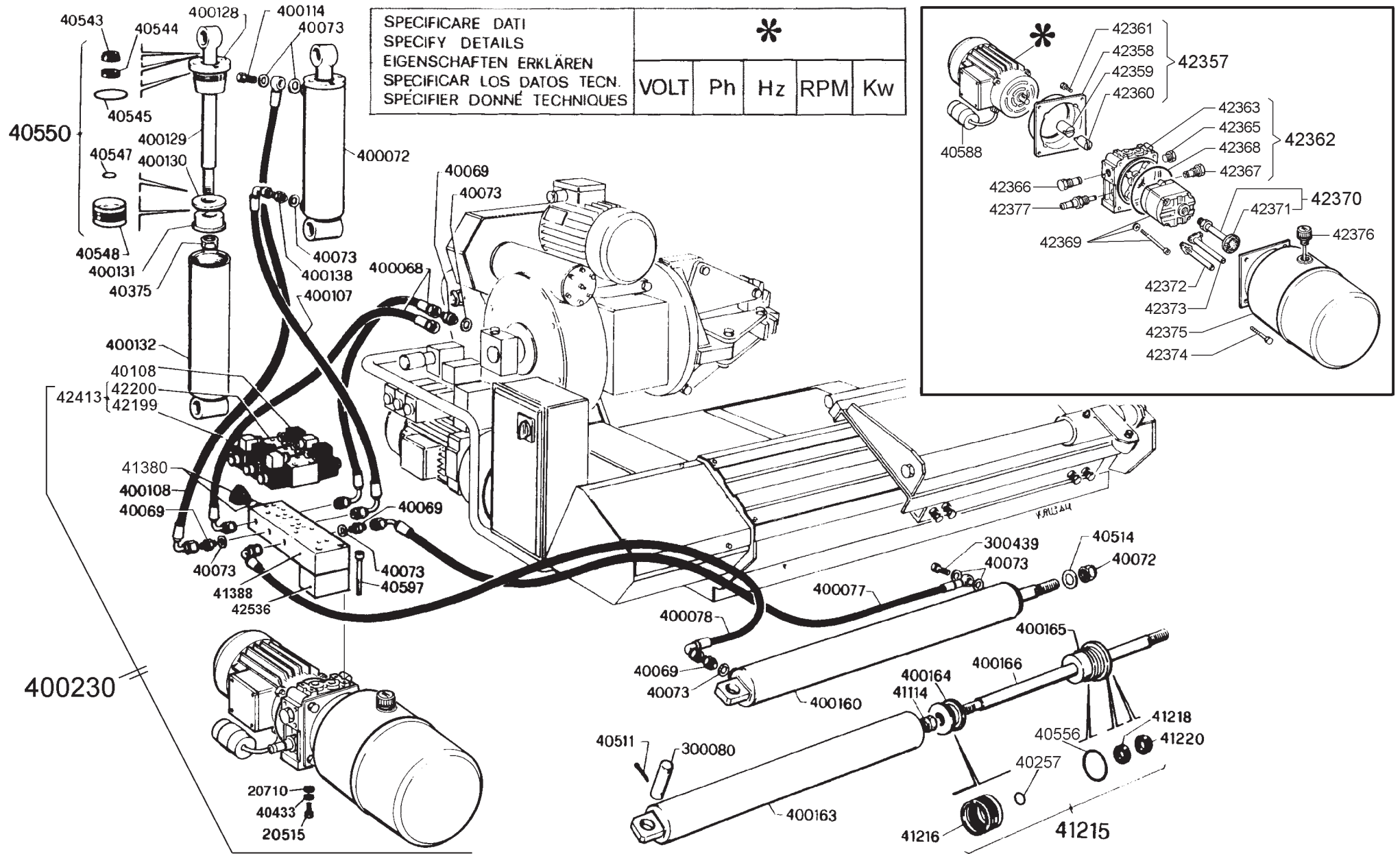
SMONTAGOMME

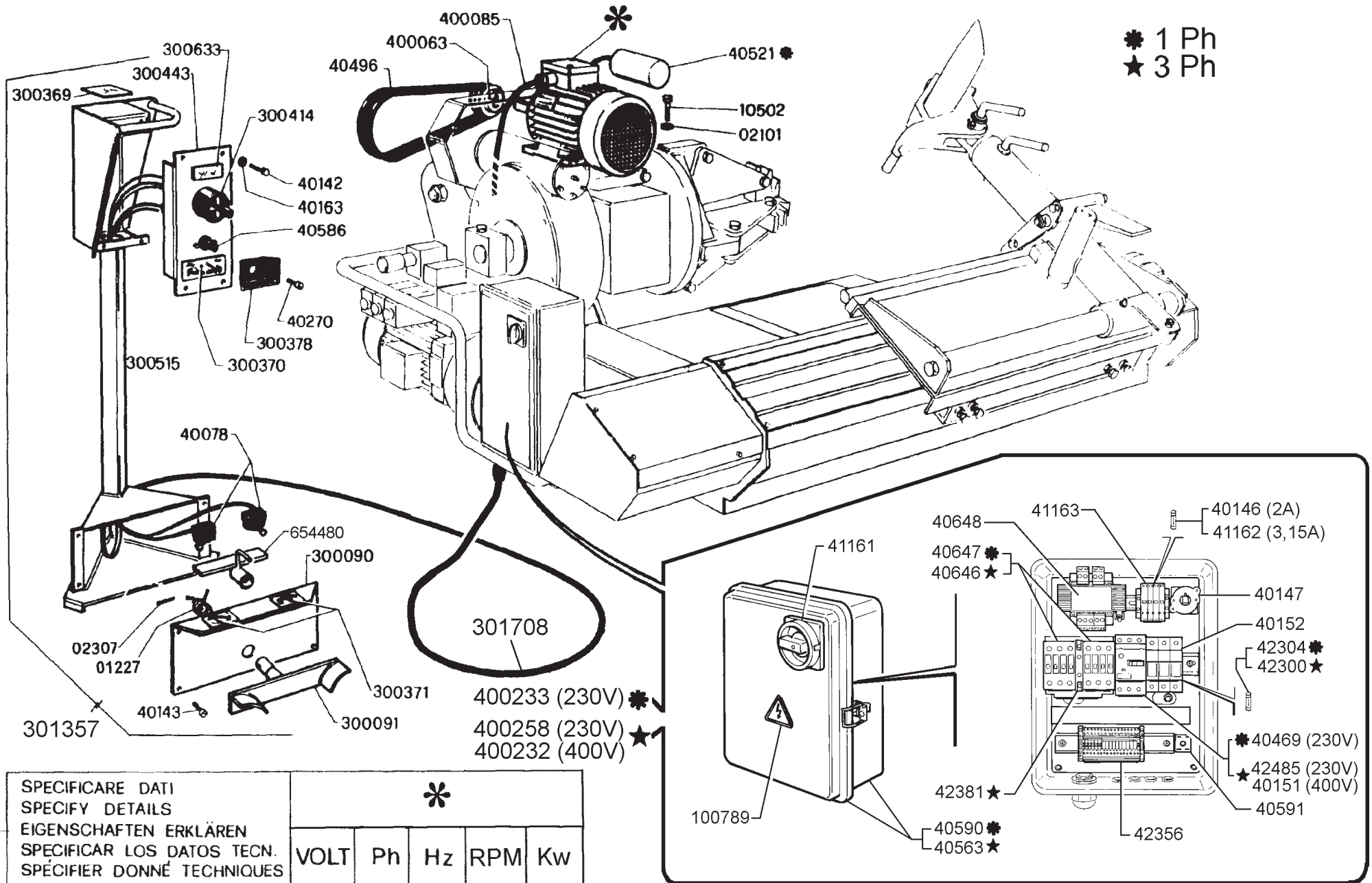
TYRE CHANGING MACHINE
DÉMONTE PNEUS
REIFENWECHSLER
DESMONTA-NEUMATICOS
DESMONTA-PNEUS
DÄCKMONTERINGSMASKIN
ШИНОМОНТАЖНЫЙ СТАНОК

N° 400151 REV. 7
N° 400152 REV. 3
N° 400153 REV. 8
N° 400154 REV. 7
N° 400155 REV. 4
N° 400156 REV. 0
N° 400232-01 REV. 0
N° 400232-02 REV. 0
N° 400232-03 REV. 0
N° 400232-04 REV. 0
N° 400232-05 REV. 0
N° 400232-06 REV. 0
N° 400233-01 REV. 0
N° 400233-02 REV. 0
N° 400233-03 REV. 0
N° 400233-04 REV. 0
N° 400233-05 REV. 0
N° 400233-06 REV. 0

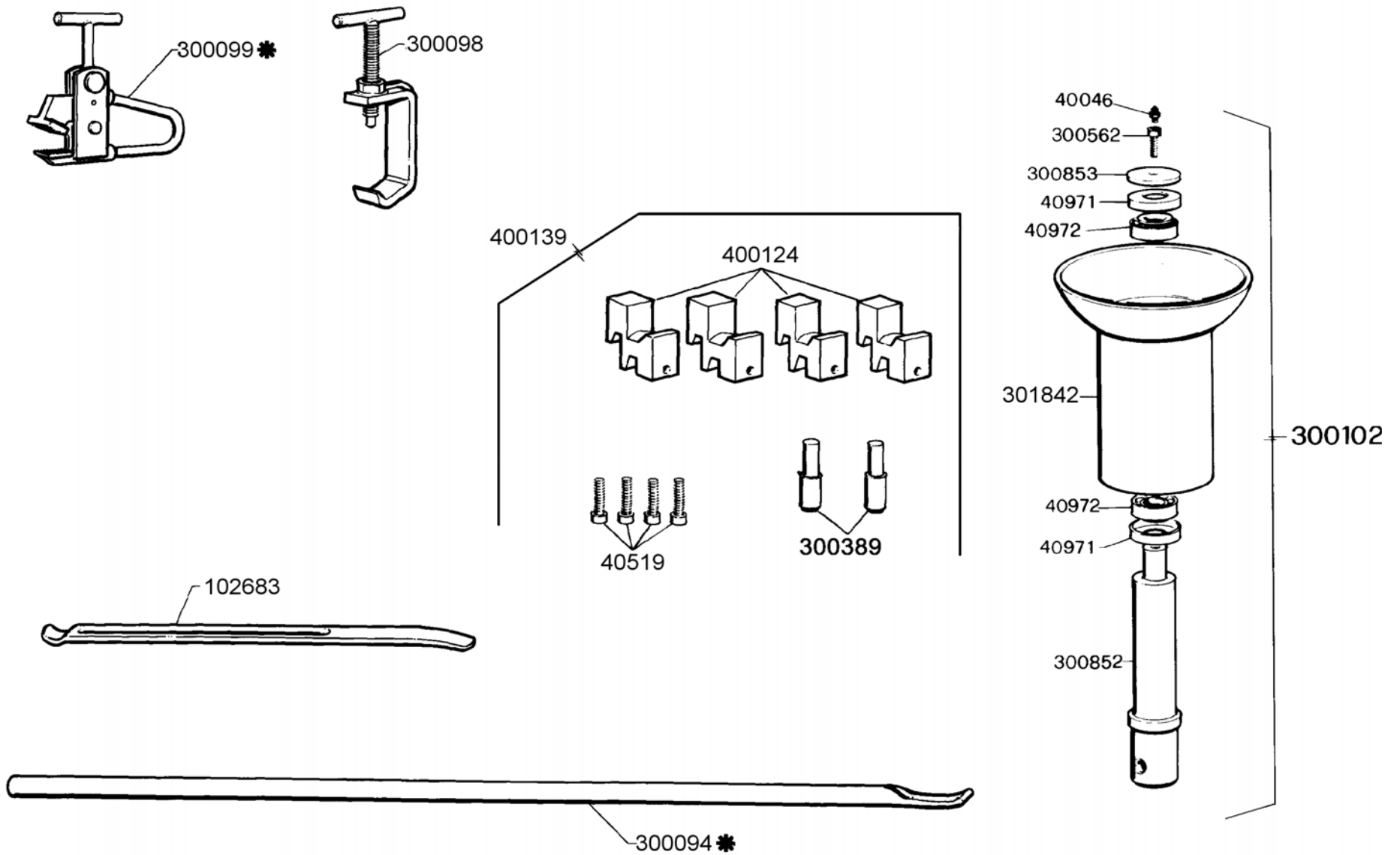
JUMBO TCS 26





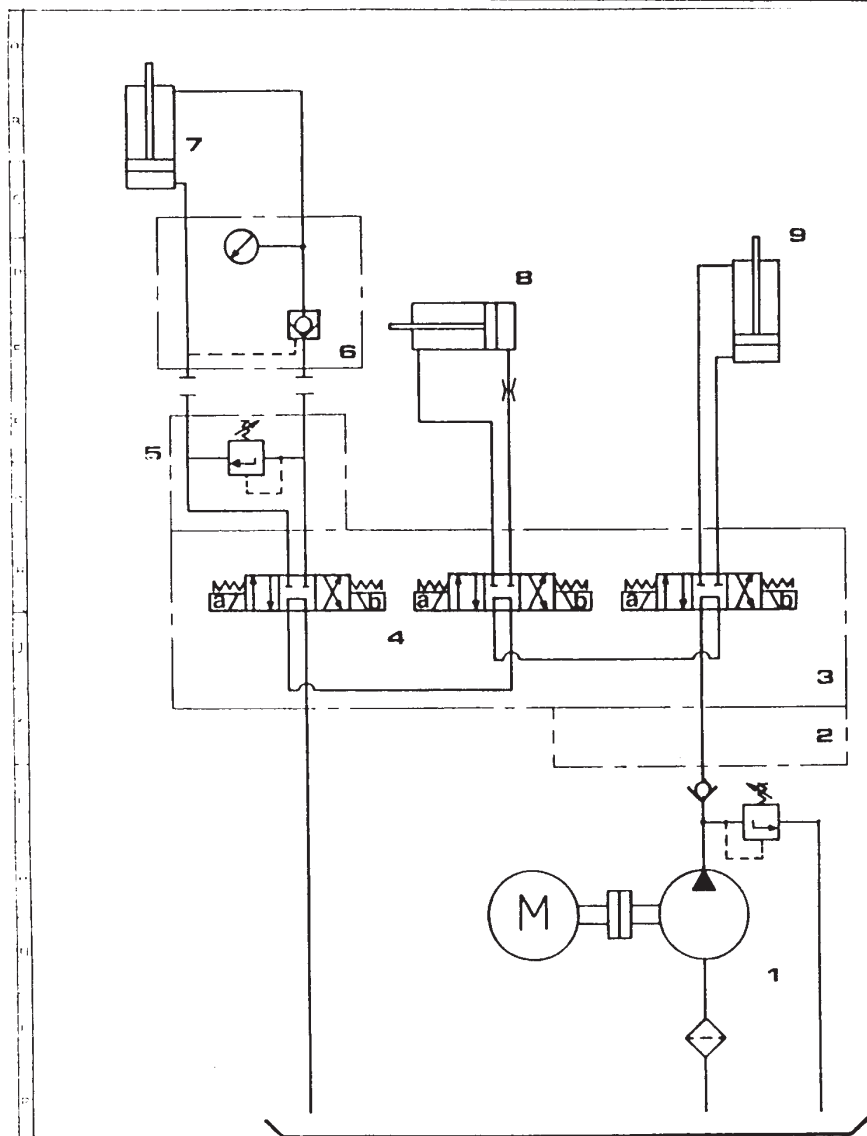


| | | | | | |
|---|------|----|----|-----|----|
| SPECIFICARE DATI SPECIFY DETAILS EIGENSCHAFTEN ERKLÄREN SPECIFICAR LOS DATOS TECN. SPÉCIFIER DONNÉ TECHNIQUES | * | | | | |
| | VOLT | Ph | Hz | RPM | Kw |



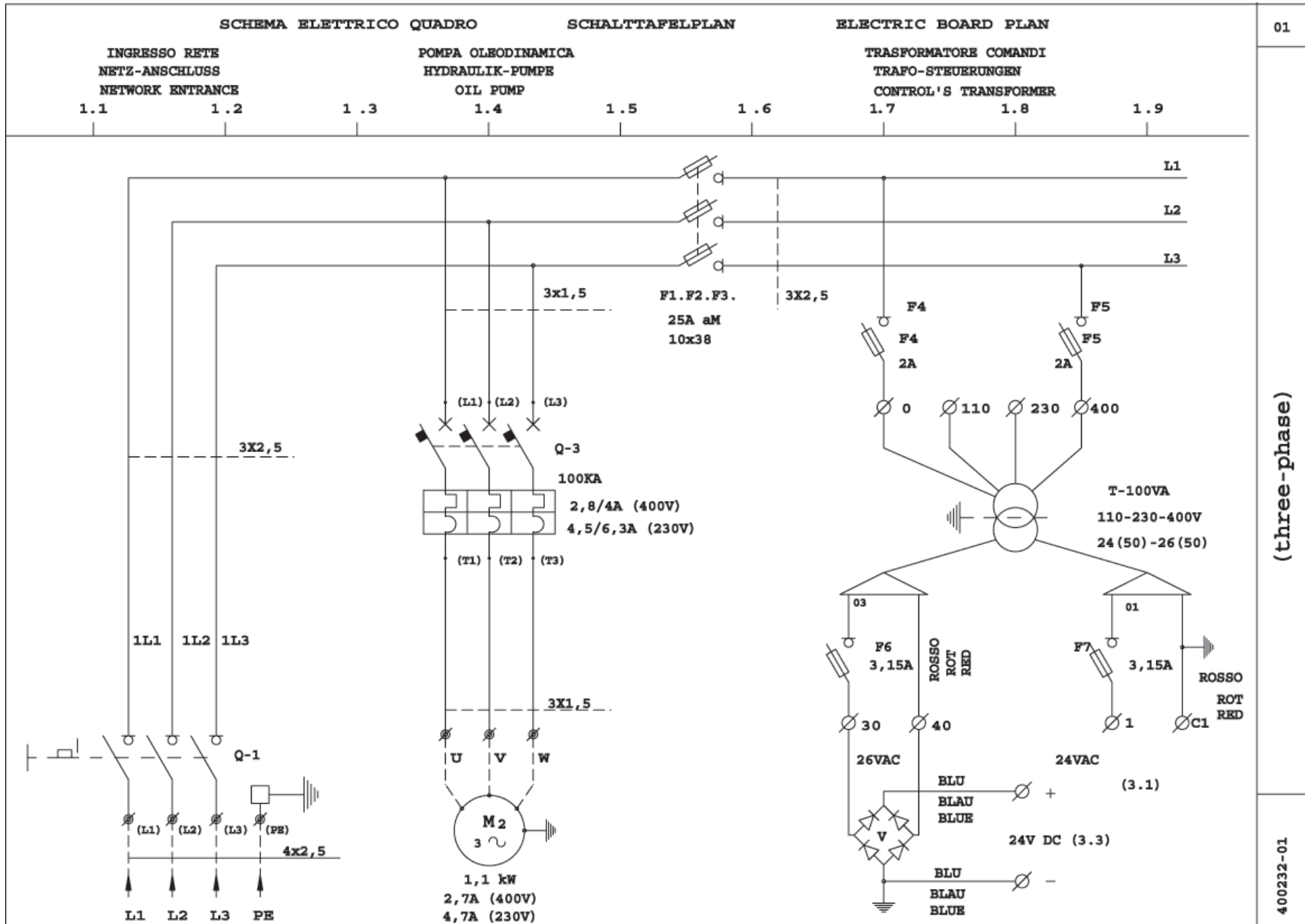
* STANDARD

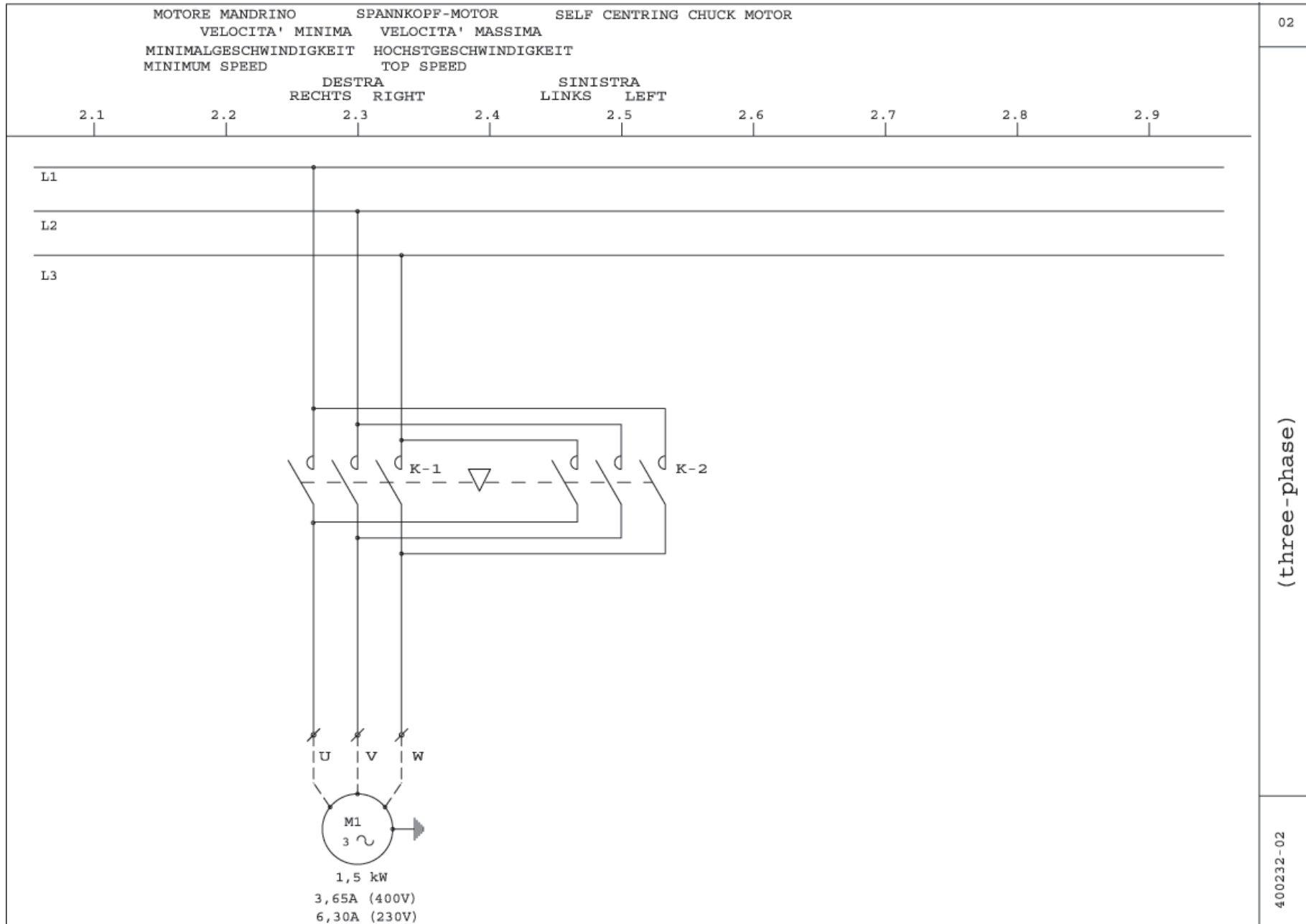
P15100154

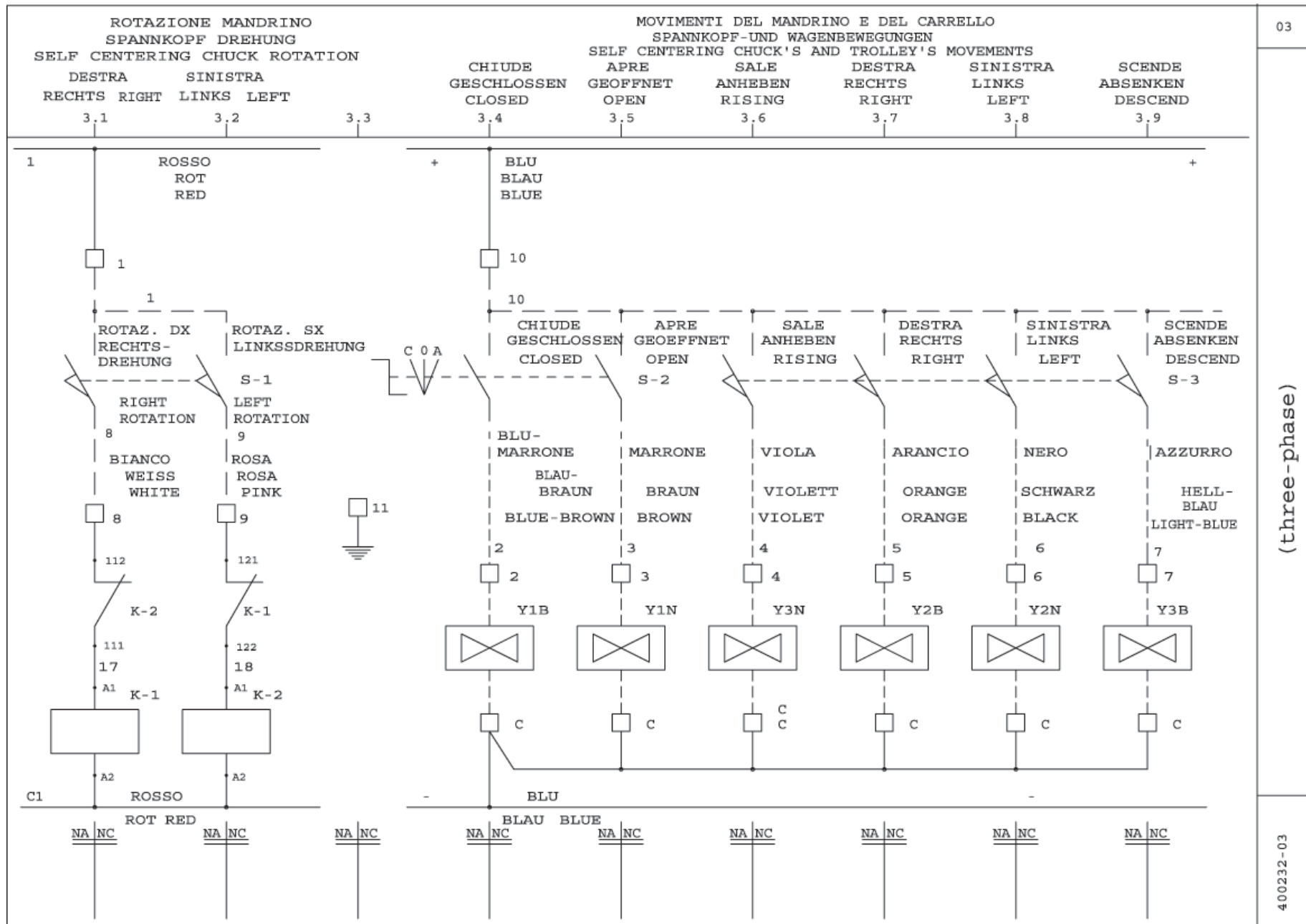


| | | | | |
|---------|-------------------------|---------|-----------|-----------|
| 9 | Cilindro mov. carro | 1 | Vario | |
| 8 | Cilindro mov. testa | 1 | " | |
| 7 | Cilindro mov. pinza | 1 | " | |
| 6 | Collettore SICAM | 1 | Fe37 | V99020000 |
| 5 | CPS100 Cart. Reg. Pres. | 1 | Vario | V70281600 |
| 4 | AE06206 24VDC Elett. | 3 | " | V11560300 |
| 3 | Base multipla spec. | 1 | Ghisa G25 | M10700073 |
| 2 | Blocchetto speciale | 1 | " | M10700074 |
| 1 | MC4-V2B-PN-MN-T06-FI | 1 | Vario | V77070000 |
| N. Ord. | DENOMINAZIONE | N. Pez. | MATERIALE | CODICE |

| POS. N° | Disegno N° | Denominazione | N° Pezzi |
|-----------------------------------|--------------|---------------|---------------|
| Denominazione SCHEMA-OLEODINAMICO | | Materiale | |
| CENTRALINA UP/HY3 | | | |
| Kg. lev. | Pag. lev. N° | Gruppo | N.P. Macchine |
| | | CENTRALINA | |
| Scale | Data 28.1.88 | 24 VOLT | |
| Dis. <i>H</i> | Cont. | | |







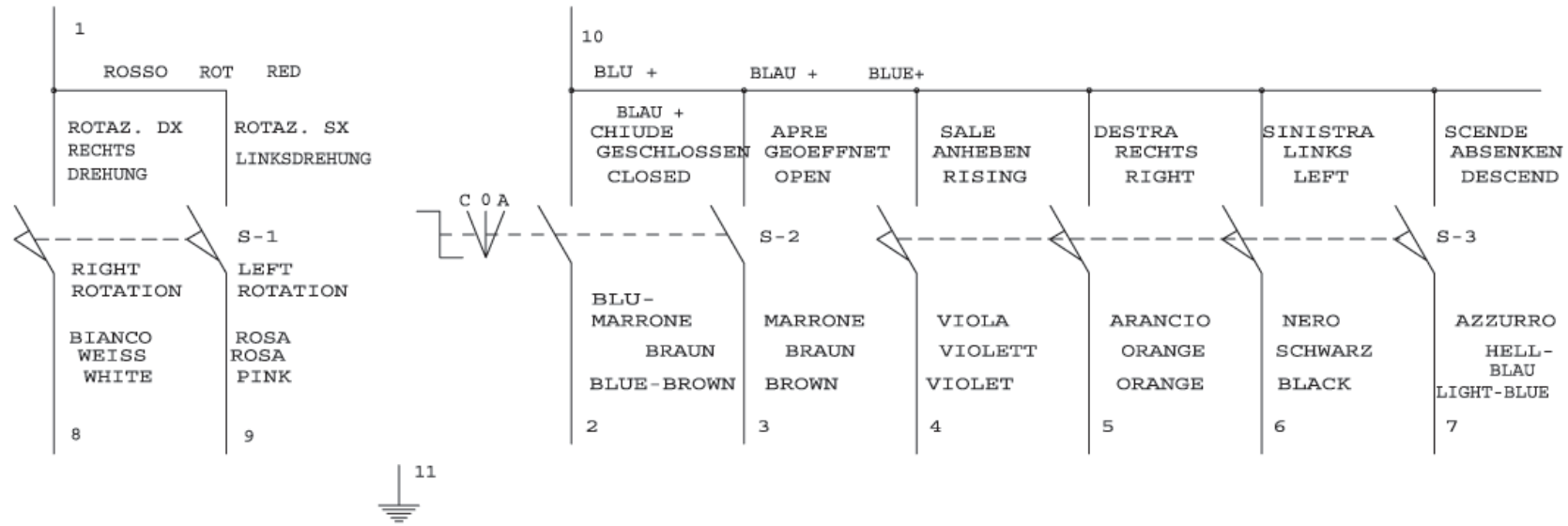
400232-03



04

| | | | | | | | | |
|--|----------|--|-------------|----------|---------|--------|----------|----------|
| ROTAZIONE MANDRINO SPANNKOPF DREHUNG SELF CENTERING CHUCK ROTATION | | MOVIMENTI DEL MANDRINO E DEL CARRELLO SPANNKOPF-UND WAGENBEWEGUNGEN SELF CENTERING CHUCK'S AND TROLLEY'S MOVEMENTS | | | | | | |
| DESTRA | SINISTRA | | CHIUDE | APRE | SALE | DESTRA | SINISTRA | SCENDE |
| RECHTS | LINKS | | GESCHLOSSEN | GEOFFNET | ANHEBEN | RECHTS | LINKS | ABSENKEN |
| RIGHT | LEFT | | CLOSED | OPEN | RISING | RIGHT | LEFT | DESCEND |
| 4.1 | 4.2 | 4.3 | 4.4 | 4.5 | 4.6 | 4.7 | 4.8 | 4.9 |

SCHEMA ELETTRICO PEDALIERA
 PEDALSCHALTPLAN
 PEDAL'S ELECTRIC PLAN

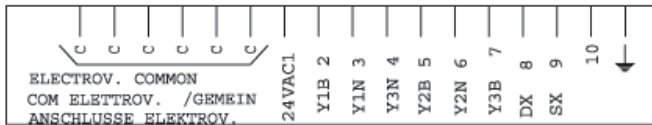


(three-phase)

400232-04

MORSETTIERA QUADRO ELETTRICO
KLEMMLEISTE SCHALTPLAN
ELECTRIC TERMINAL BOARD

5 . 1 5 . 2 5 . 3 5 . 4 5 . 5 5 . 6 5 . 7 5 . 8 5 . 9



NA | NC

NA | NC

NA | NC

NA | NC

NA | NC

NA | NC

NA | NC

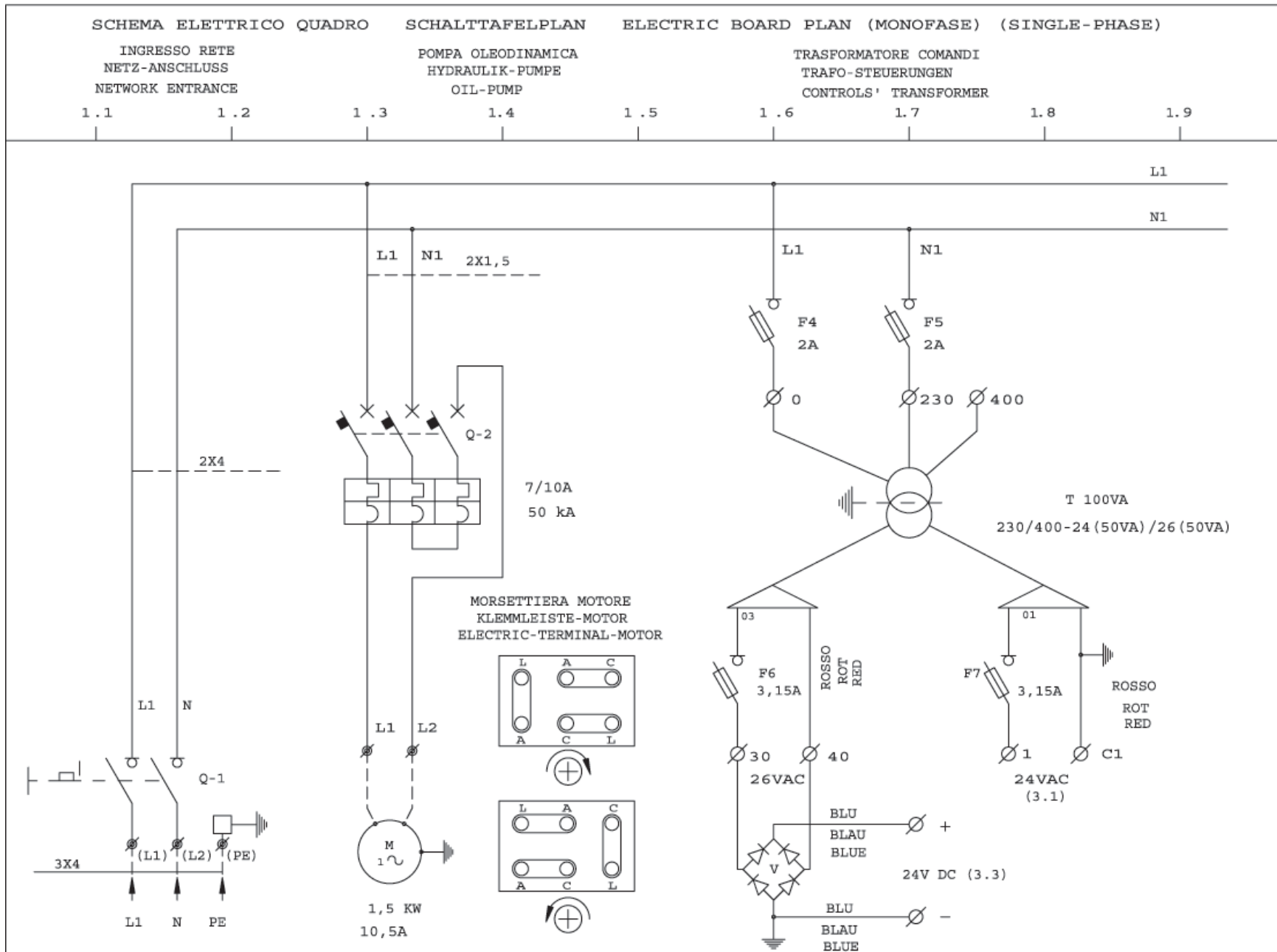
NA | NC

NA | NC

(three-phase)

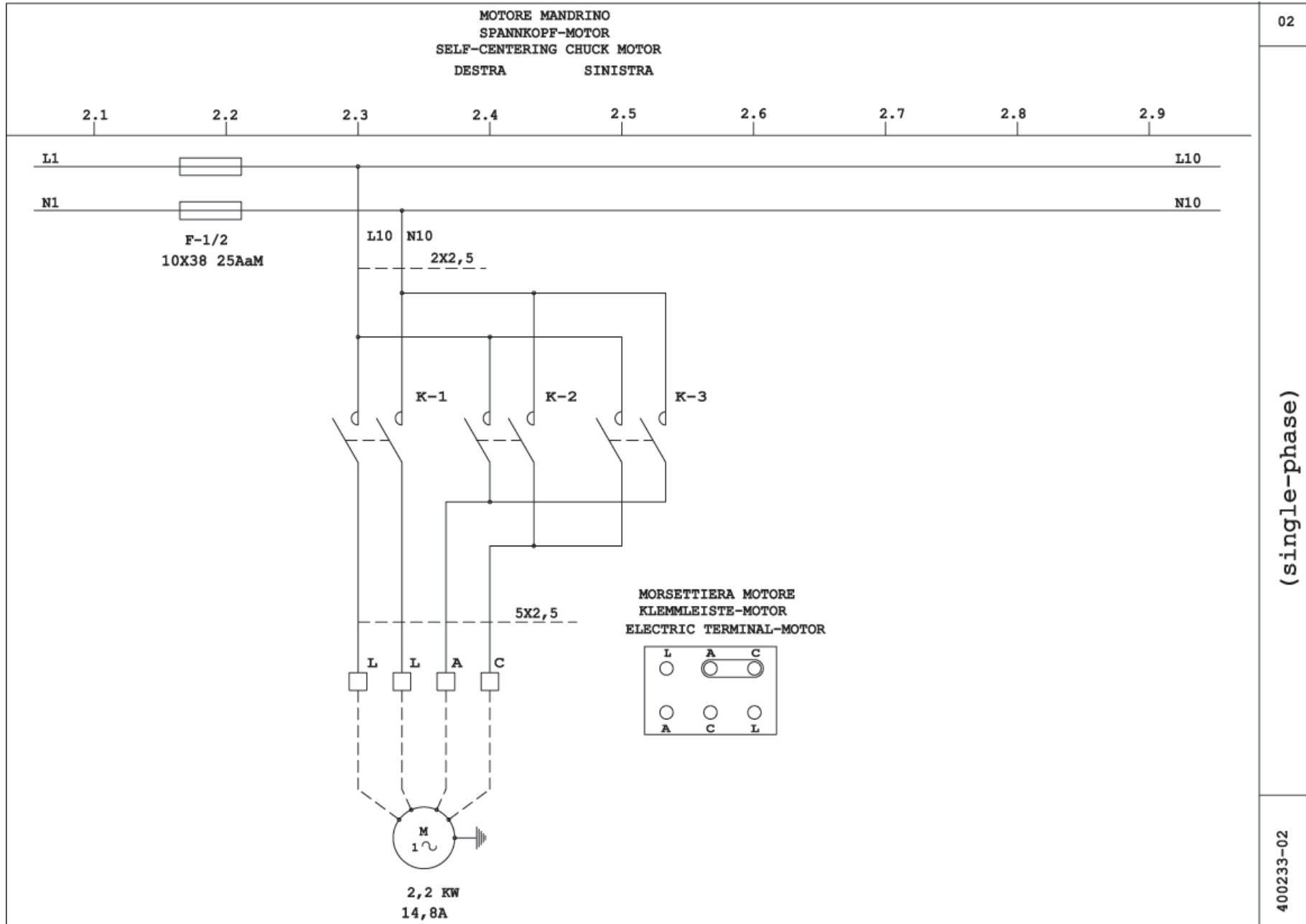
400232-05

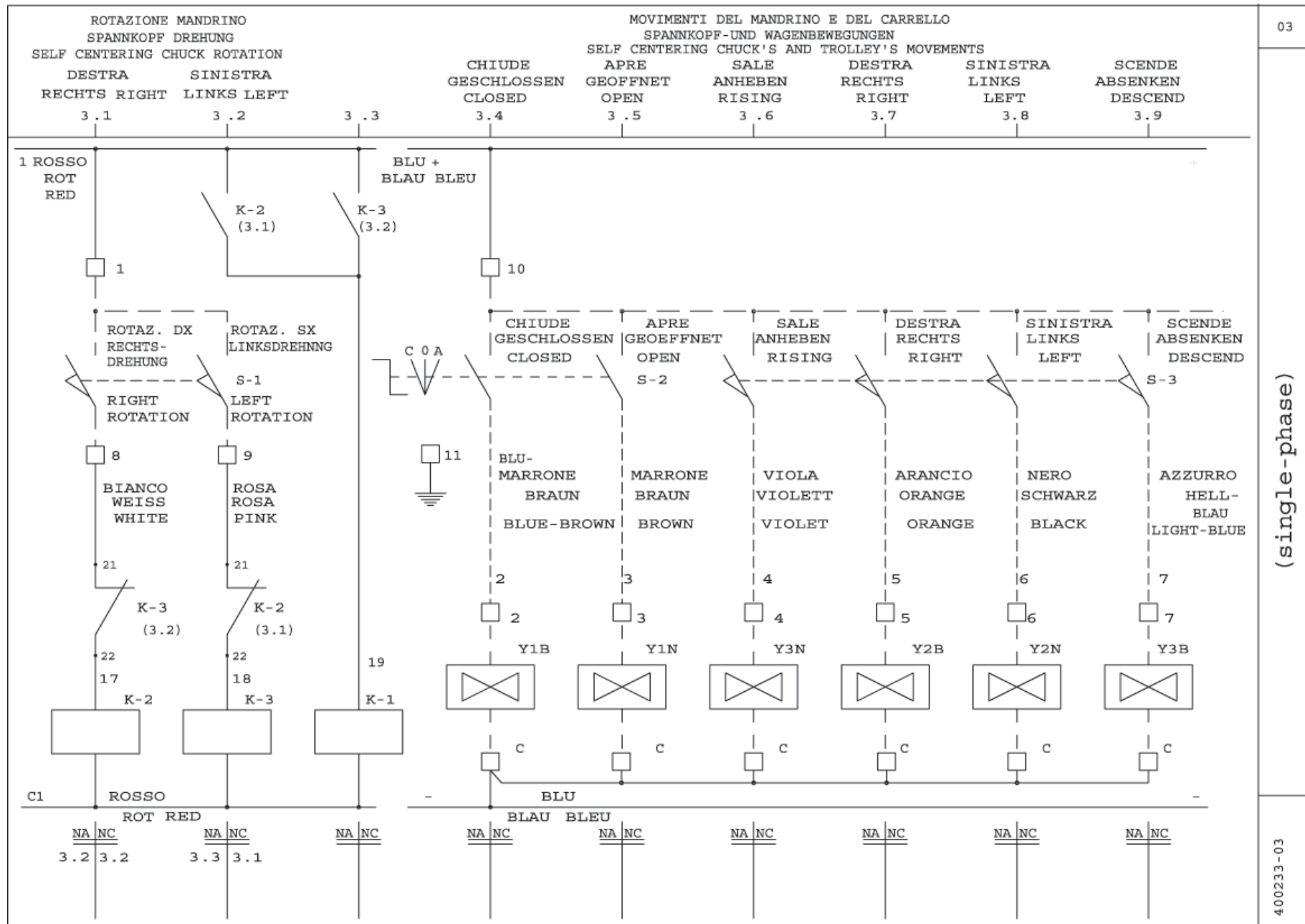
| ELENCO MATERIALE PEDALIERA | | | | | | |
|----------------------------------|-------------------|---------------------------------|--|--|--|---|
| | | | | | | |
| | | | | | | |
| | | | | SUPPORTO MANIPOLATORE | 300443 | |
| | | | | CORPO PEDALIERA | 300515 | |
| | | | | GRUPPO COPERCHIO PEDALIERA | 300771 | |
| 4.6 | S-3 | 1 | | MANIPOLATORE A QUATTRO POSIZIONI | 300375 - 300378 3000377 - 300380 300381 | |
| 4.9 | | | | PIASTRINA TERMINALE E BLOCCHETTI DI FISSAGGIO | TDS (n°4) CF83161 | SAIA CROUZED |
| 4.4 | S-2 | 1 | | DEVIATORE INSTABILE CON CAPPUCCIO | S1F-C/2T+B3 T18/1 300378 | FEME |
| 4.1 | S-1 | 2 | | MICROINTERRUTTORI | MS-09 | PIZZATO |
| ELENCO MATERIALE QUADRO ELETRICO | | | | | | |
| | | | | CASSETTA IN METALLO VERNICIATO IP 54 | 6084 | EBI |
| | | | | | | |
| 1.6 | V | 1 | | PONTE DI RADDRIZZATORI 25A 400V | KBPC2508 | MIC |
| | | | | | | |
| 5.2 | | 16 | | MORSETTI COMPONIBILI 2,5 mmq COMPLETI DI PETTINE, PIASTRINA TERMINALE E BLOCCHETTI DI FISSAGGIO | 177206 + 160890 + 170611 + 954000 | WEIDMULLER |
| | | | | MORSETTO DI TERZA 2,5 mmq | 1772090 | WEIDMULLER |
| 1.6 | T | 1 | | TRASFORMATORE MONOFASE 100VA PRIM. 110/230/400 +SCHERMO SEC. 24(50)/26(50) | 1381416 | ARES |
| 1.5 | F6 | 2 | | FUSIBILE 5X20 3,15A | 5X20 3,15A | WEBER |
| 1.7 | F7 | | | | | |
| 1.5 | F4 | 2 | | FUSIBILE 5X20 2A | 5X20 2A | WEBER |
| 1.7 | F5 | | | | | |
| 1.5 | F4 | 4 | | PORTAFUSIBILE PER GUIDA | SFR4 | CABUR |
| 1.7 | F5 | | | | | |
| 1.5 | F6 | | | | | |
| 1.7 | F7 | | | | | |
| | | | | PETTINI PER CABLAGGIO | 3RA1923-2A | SIEMENS |
| | | | | INTERBLOCCO MECCANICO CON INC | 3RA1924-2B | SIEMENS |
| 2.1 | K-1 | 2 | | CONTATTORE TRIPOLARE 24V AC 50/60 Hz 4 kW | 3RT1023-1AC20 | SIEMENS |
| 2.4 | K-2 | | | | | |
| 1.6 | F7.2.3 | 3 | | FUSIBILI 10X38 25A aM | 3NW8 010-1 | SIEMENS |
| 1.6 | F/1 F/2 F/3 | 1 | | PORTAFUSIBILE SEZIONABILE 10X38 32A 660V | 3NW7 031 Q 13803 | SIEMENS OMEGA |
| 1.4 | Q-3 | 1 | | SALVAMOTORE MAGNETOTERMICO TRIPOLARE PER MACCHINA TRIFASE 400V : 2,8/4A PER MACCHINA TRIFASE 230V : 4,5/6,3A | 3RV1011-1EA10 3RV1011-1EA10 | SIEMENS |
| 1.2 | Q-1 | 1 | | INTERRUTTORE BLOCCO FORTE LUCCHETTABILE 3X16A | CQ0160003XL6 | VERMER |
| POS. | SIGLA | Q.TA' STUCK Q.TE' Q.TY | | DESCRIZIONE BENENNUNG DESCRIPTION | SIGLA E NORMA TYP.-UND NORMENBEZEI- REF. ET NORMATIVE REF. AND NORM | PRODUTTORE/FORNIT. HERSTELLER/LIEFER. PRODUCTEUR/FORNIS. PRODUCER/SUPPLIER |
| 400232-06 | (three-phase) | | | | | 06 |



(single-phase)

400233-01

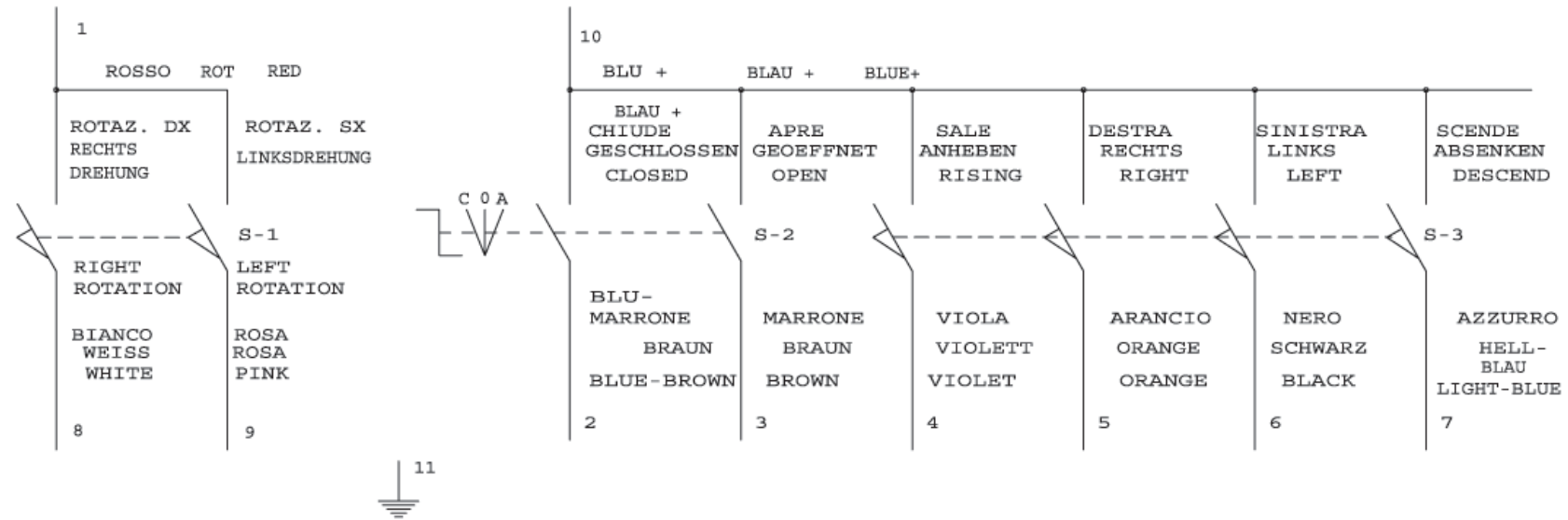




04

| | | | | | | | | | |
|--|-------------------|------|--|--------------------------|---------------------------|---------------------------|---------------------------|-------------------------------|--|
| ROTAZIONE MANDRINO SPANNKOPF DREHUNG SELF CENTERING CHUCK ROTATION | | | MOVIMENTI DEL MANDRINO E DEL CARRELLO SPANNKOPF-UND WAGENBEWEGUNGEN SELF CENTERING CHUCK'S AND TROLLEY'S MOVEMENTS | | | | | | |
| DESTRA RECHTS | SINISTRA LINKS | | CHIUDE GESCHLOSSEN CLOSED | APRE GEOFFNET OPEN | SALE ANHEBEN RISING | DESTRA RECHTS RIGHT | SINISTRA LINKS LEFT | SCENDE ABSENKEN DESCEND | |
| 4 .1 | 4 .2 | 4 .3 | 4 .4 | 4 .5 | 4 .6 | 4 .7 | 4 .8 | 4 .9 | |

SCHEMA ELETTRICO PEDALIERA (MONOFASE)
 PEDALSCHALTPLAN (SINGLE-PHASE)
 PEDAL'S ELECTRIC PLAN



(single-phase)

400233-04

MORSETTIERA QUADRO ELETTRICO
KLEMMLEISTE SCHALTPLAN
ELECTRIC TERMINAL BOARD

5 . 1 5 . 2 5 . 3 5 . 4 5 . 5 5 . 6 5 . 7 5 . 8 5 . 9



NA | NC

NA | NC

NA | NC

NA | NC

NA | NC

NA | NC

NA | NC

NA | NC

NA | NC

(single-phase)

400233-05

| ELENCO MATERIALE PEDALIERA | | | | | | | | | | |
|----------------------------------|----------------|---------------------------------|--|---|--------------------------------------|---|--------|--|---|----|
| | | | | | | | | | | |
| | | | | | | | | | | |
| | | | | | SUPPORTO MANIPOLATORE | | 300443 | | | |
| | | | | | CORPO PEDALIERA | | 300515 | | | |
| | | | | | GRUPPO COPERCHIO PEDALIERA | | 300771 | | | |
| 5.6 | S3 | 1 | | MANIPOLATORE A QUATTRO POSIZIONI | | 300375 - 300378 3000377 - 300380 300381 | | | | |
| 5.9 | | | | | | TDS (n°4) CF83161 | | SAIA CROUZED | | |
| 5.4 | S1 | 2 | | DEVIATORE INSTABILE CON CAPPUCCIO | | S1F-C/2T+B3 T18/1 300378 | | FEME | | |
| 5.4 | S5 | | | | | | | | | |
| 5.1 | S-1 | 2 | | MICROINTERRUTTORE | | MS-09 | | PIZZATO | | |
| ELENCO MATERIALE QUADRO ELETRICO | | | | | | | | | | |
| | | | | | CASSETTA IN METALLO VERNICIATO IP 54 | | 6084 | | EBI | |
| | | | | | | | | | | |
| 1.6 | V | 1 | | PONTE DI RADDRIZZATORI 25A 400V | | KBFC2508 | | | MIC | |
| 7.7 | | 16 | | MORSETTI COMPONIBILE 2,5 mmq COMPLETI DI PETTINE PIASTRINA TERMINALE E BLOCCHETTI DI FISSAGGIO | | 177206 + 160890 + 170611 + 954000 | | | WEIDMULLER | |
| 7.7 | | 1 | | MORSETTO DI TERRA 2,5 mmq | | 1772090 | | | WEIDMULLER | |
| 1.6 | T | 1 | | TRASFORMATORE MONOFASE 100VA PRIM. 110/230/400 +SCHERMO SEC. 24(50)/26(50) | | 1381416 | | | ARES | |
| 1.5 | F6 | 2 | | FUSIBILE 5X20 3,15A | | 5X20 3,15A | | | WEBER | |
| 1.7 | F7 | | | | | | | | | |
| 1.5 | F4 | 2 | | FUSIBILE 5X20 2A | | 5X20 2A | | | WEBER | |
| 1.7 | F5 | | | | | | | | | |
| 1.5 | F4 | 4 | | PORTAFUSIBILE PER GUIDA | | SFR4 | | | CABUR | |
| 1.7 | F5 | | | | | | | | | |
| 1.5 | F6 | | | | | | | | | |
| 1.7 | F7 | | | | | | | | | |
| 3.9 | B-4 | 1 | | MICROINTERRUTTORE DI SICUREZZA | | 3BE3 100-0B FD 601 | | | SIEMENS PIZZATO | |
| 2.4 | K-2 | 2 | | CONTATTORE TRIPOLARE 1NA+1NC 24V AC 7,5 kW | | 3TF42 11-0AC2 | | | SIEMENS | |
| 2.4 | K-3 | | | | | | | | | |
| 2.1 | K-1 | 1 | | CONTATTORE TRIPOLARE 1NA 24V AC 11kW | | 3TF43 10-0AC2 | | | SIEMENS | |
| 2.2 | F/1.2 | | | FUSIBILE 32A 10X38 | | 1421032 | | | WEBER | |
| 2.2 | F/1 F/2 | 1 | | PORTAFUSIBILE BIPOLARE 30X38 | | 3RW7031 Q 13803 | | | SIEMENS OMEGA | |
| 1.4 | Q-3 | 1 | | SALVAMOTORE MAGNETOTERMICO TRIPOLARE 7/10A | | 3RV1011-1JA10 | | | SIEMENS | |
| 1.2 | Q-1 | 1 | | INTERRUTTORE CON BLOCCO PORTA LUCCHETTABILE 3C25A | | CQ0250003XL6 | | | VEMER | |
| POS. | SIGLA | Q.TA' STUCK Q.TE' Q.TY | | DESCRIZIONE BENENNUNG DESCRIPTION | | | | SIGLA E NORMA TYP.-UND NORMENBEZEI- REF. ET NORMATIVE REF. AND NORM | PRODUTTORE/FORNIT. HERSTELLER/LIEFER. PRODUCTEUR/FORNIS. PRODUCER/SUPPLIER | |
| 400233-06 | (single-phase) | | | | | | | | | 06 |



SICAM S.r.l.

Via della Costituzione 49

42015 Correggio (RE) ITALY

Tel. +39 0522 643311

Telefax: + 39 0522 637760

<http://www.sicam.it>

sales@sicam.it