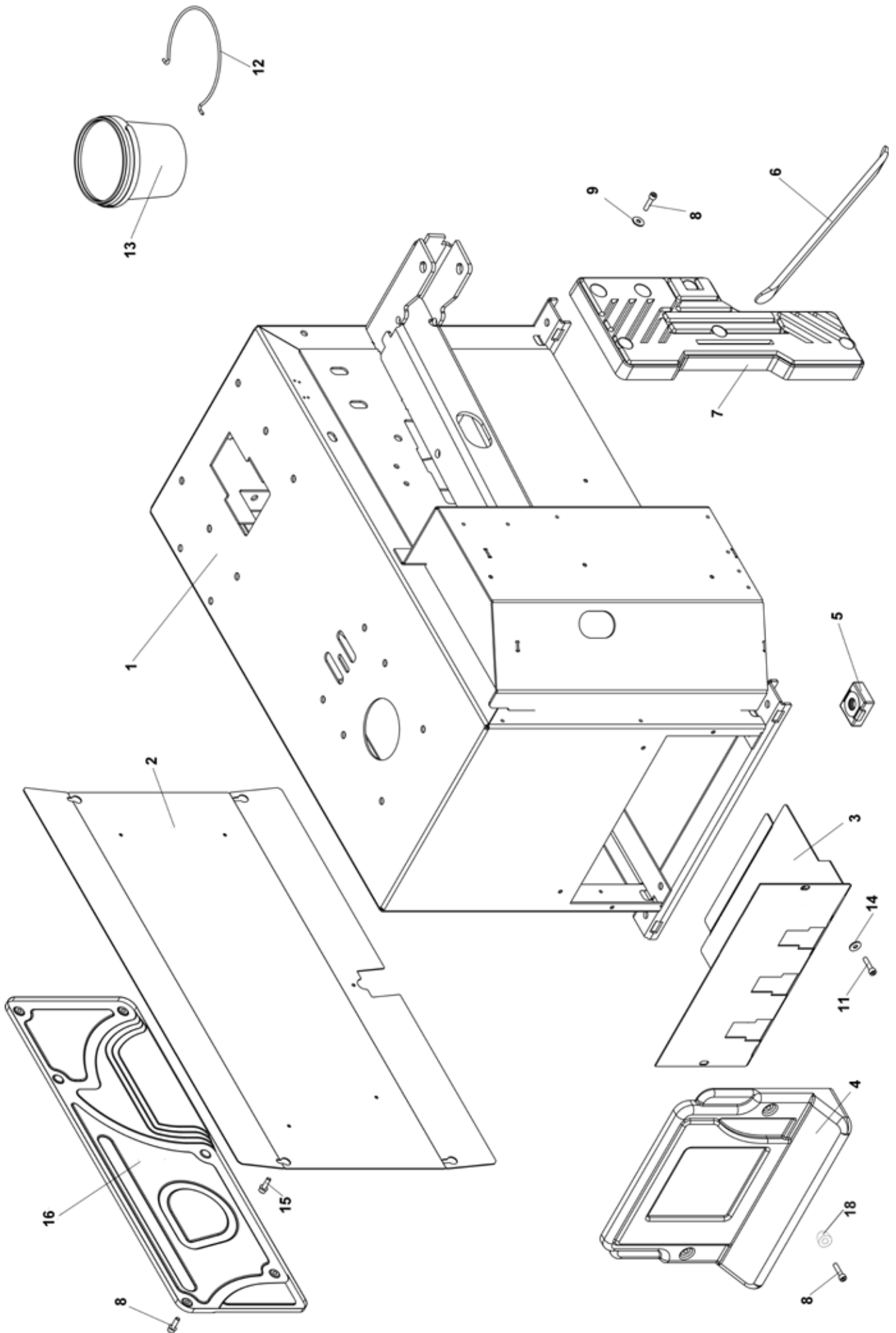




MAXI

Esplso con elenco ricambi
Exploded view with spare parts list

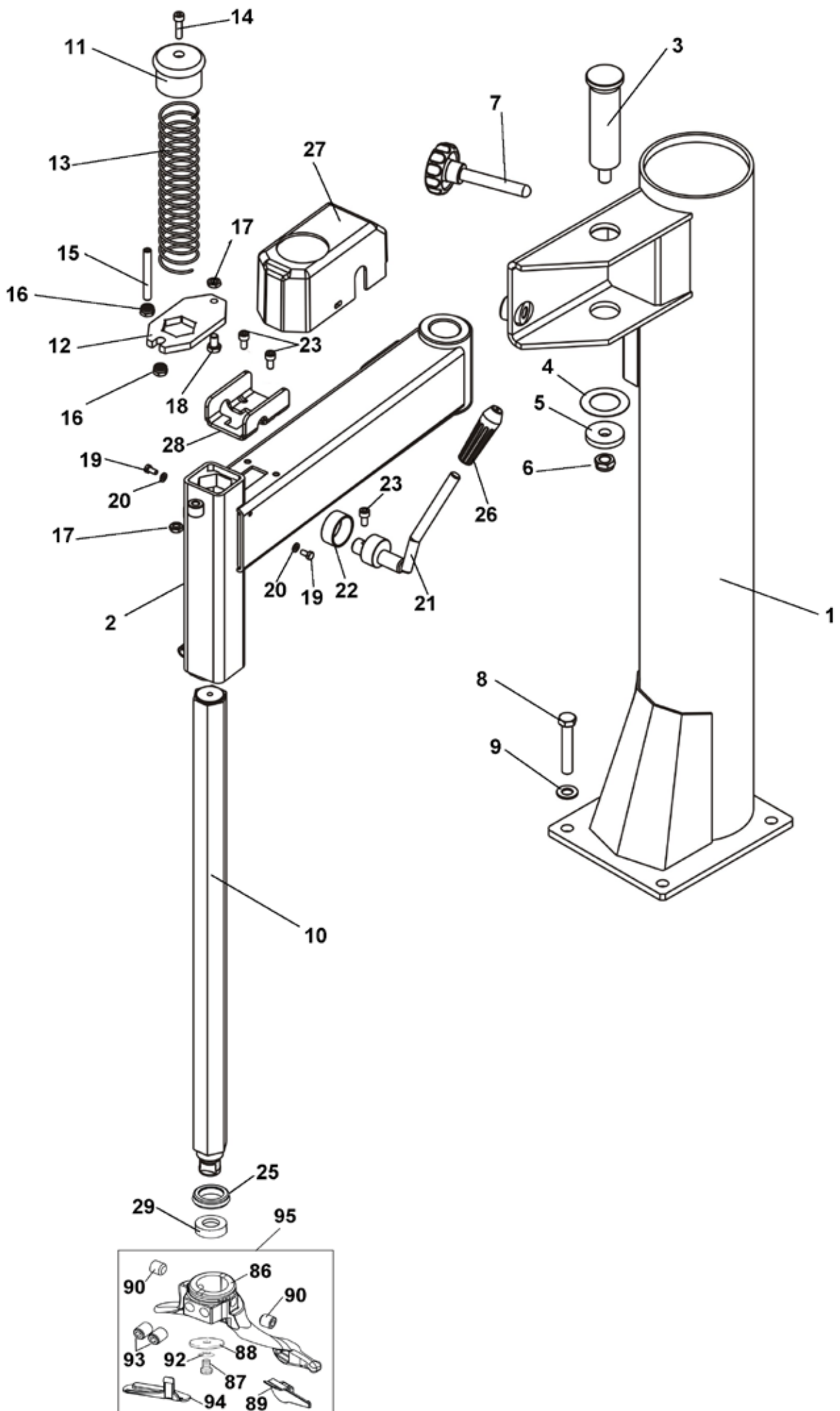




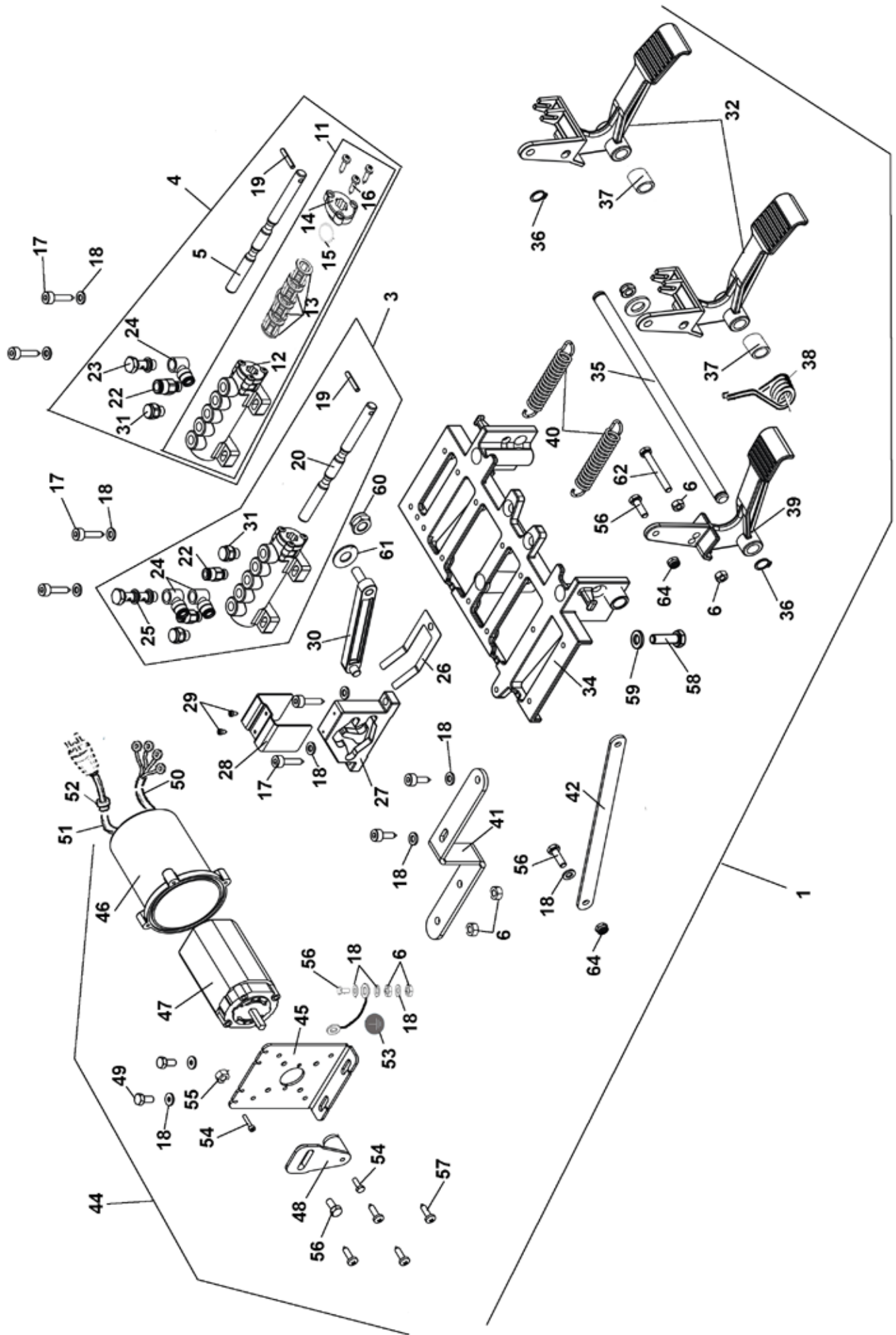
Rif. Ref.	Codice Code	Descrizione	Description
1	5837995	CARCASSA	SHELL
2	5835739	COPERCHIO LAT.	SIDE COVER
3	5812080	SUPP. PEDALIERA	SUPPORT PEDALES
4	3036046	PROTEZIONE PEDALI	PROTECTION PEDALES
5	3002099	PIEDE IN PLASTICA PER CARCASSA	PLASTIC FOOT
6	3006970	LEVA ALZATALLONI TIPO C	BEAD LIFTING LEVER
7	3032880	APPOGGIO RUOTA INTEGRALE	WHEEL SUPPORT
8	4399999	VITE TCEI M 6x25	SCREW 6x25
9	4398848	RONDELLA 6 (6,6x18x1,5)ZNT6593	WASHER 6
11	4398723	VITE TE 6x12 8.8	SCREW 6x12
12	3000069	MOLLA ANELLO PER SECCHIELLO	SPRING
13	4293086	SECCHIELLO GRASSO	GREASE CUP
14	4399998	RONDELLA 6 (6,4x12x1,6)	WASHER 6
15	4393749	VITE FLANG. TCEI 6X20 ZNT	SCREW 6x20
16	3037473	PANNELLO ABS SMONTAGOMME	ABS COVER
18	2039827	TAPPO FISSAGGIO CARTER ABS	PLUG

Per ordinazioni specificare **sempre** il **numero di matricola** rilevabile sull'apposita targhetta posta sulla macchina. Indicare **sempre** il numero di **riferimento** e il numero di **codice** del particolare.

When ordering **always** specify the **serial number** shown on the data plate placed on the machine. Please also **always** specify the **reference** and the **code** number of the spares you require.

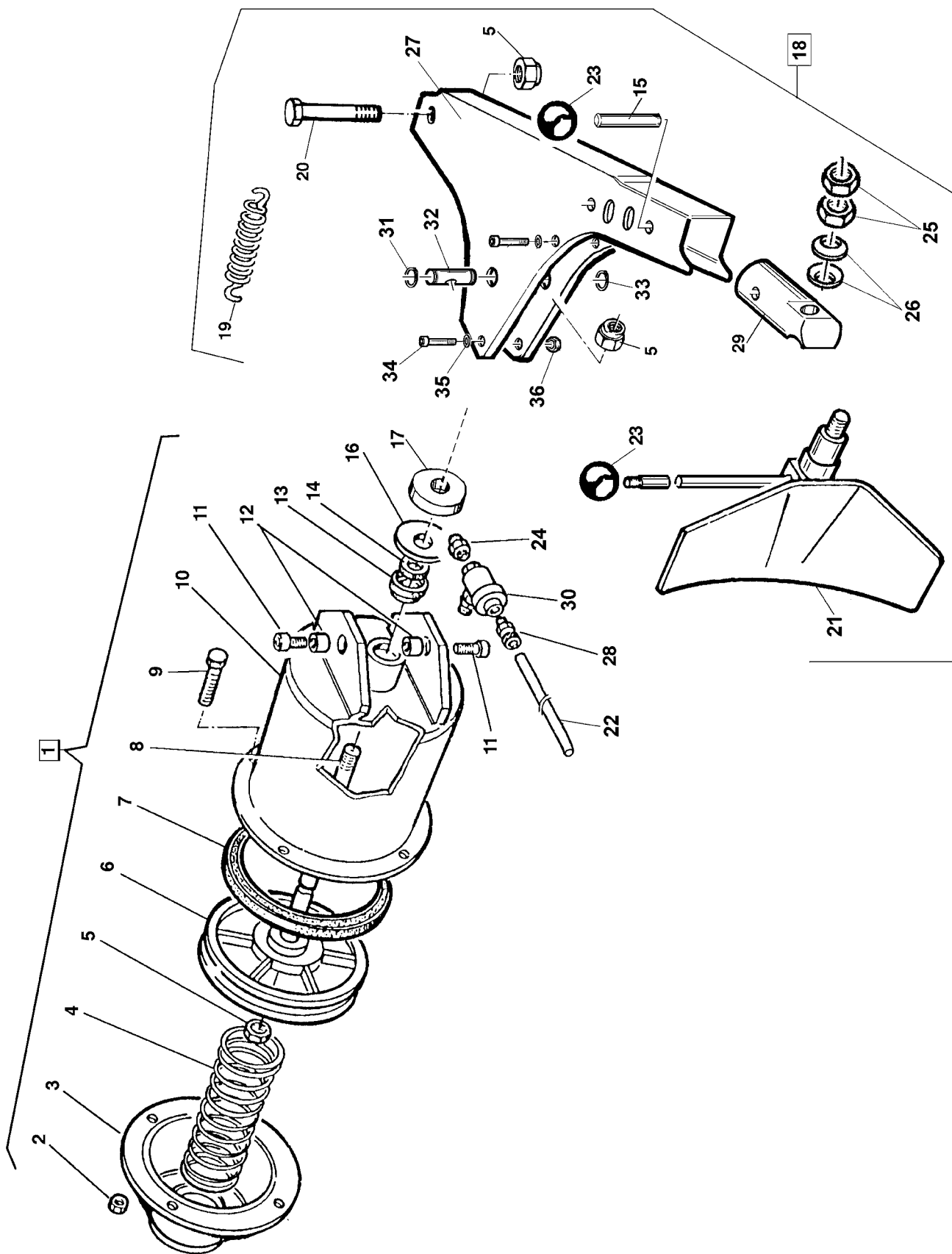


Rif. Ref.	Codice Code	Descrizione	Description
1	5812737	PALO VERTICALE	VERTICAL ARM
2	7039287	PALO ORIZZONTALE	HORIZONTAL ARM
3	3000078	PERNO SNODO PALO ORIZZONTALE	HORIZONTAL ARM TRUNNION
4	4399962	RASAMENTO ACCIAIO 40X65X0,5	STEEL SHIM 65x40x0,5
5	3000079	RONDELLA D.51X16X8	WASHER
6	4399963	DADO AUTOBL.M16 BASSO	NUT
7	3000487	VOLANTINO M16 V1/70/V-M16X100	HANDWHEEL M16 V1/70/V-M16X100
8	4393520	VITE TE 10x55 8.8 ZNT	SCREW 10x55
9	4399378	RONDELLA 10 (10,5x21x2)ZNT	WASHER
10	3002365	BRACCIO OP. ES.41 L=777	HEXAGONAL ARM D.41 L=777
11	3001759	POMOLO BRACCIO OPERANTE	OPERATING ARM KNOB
12	3002366	PIASTRA BL.BO ES.41	ARM LOCKING PLATE
13	3005407	MOLLA COMPR.BO	SPRING
14	4399134	VITE TCEI M 8x30 8.8 ZNT	SCREW 8x30
15	4397964	VITE STEI 10x80 P.P.	SCREW 10x80
16	4399971	DADO AUTOBL.M10 BASSO	NUT
17	4399967	DADO M10 6S BASSO	NUT
18	4398900	VITE OTTONE TE M10x25	SCREW
19	4398723	VITE TE 6x12 8.8 ZNT	SCREW 6x12
20	4399998	RONDELLA 6 (6,4x12x1,6)ZNT	WASHER
21	2106664	LEVA BLOCC. B.O. -ZNT	ARM LOCKING LEVER
22	3003378	DISTANZ. SUP. - BRUNIT. ALTO	SPACER
23	4399298	VITE TCEI M 8x16 8.8 ZNT	SCREW 8x16
25	3017974	COPERCHIO ANELLO AMMORTIZ.	SHOCK ABSORB. RING COVER
26	4298972	POMOLO A PRESSIONE D.14	KNOB D.14
27	3006662	CARENAT.PALO ORIZZ.	ARM FRAME
28	3038997	CAVALLOTTO BLOCCAGGIO BRACCIO	ARM BLOCKING PLATE
29	3002601	AMMORTIZ. TORRETTA ES.41	MOUNTING TOOL SHOCK ABSORBER
86	3015133	UTENSILE INTEGR.ORIENT. STRONG	SWINGING MOUNTING HEAD STRONG
87	4399953	VITE TE 10x16 8.8 5739	SCREW M10x16 8.8
88	4395804	RONDELLA DIN6319 "G" 14,2x35x5	WASHER DIN6319 "G" 14,2x35x5
89	3006689	INSERTO PLAST. X TORR. INTEGR.	PLASTIC INSERT
90	4398179	VITE STEI 12x12 P.CONICA 5927	SCREW STEI M12x12
91	4399958	SPINA CIL.RETT. 5x24	PARALLEL PIN 5x24
92	4395805	RONDELLA DIN6319 "C" 10,2x21x4	WASHER DIN6319 "C" 10,2x21x4
93	4398426	VITE STEI 12x16 P.CONICA 5927	SCREW 12x16
94	3013650	INSERTO INFER. X TORR. INTEGR.	PLASTIC INSERT
95	2014250	TORRETTA INTEGR.OR.STRONG COMPL.	MOUNTING TOOL

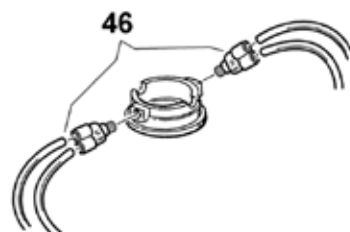
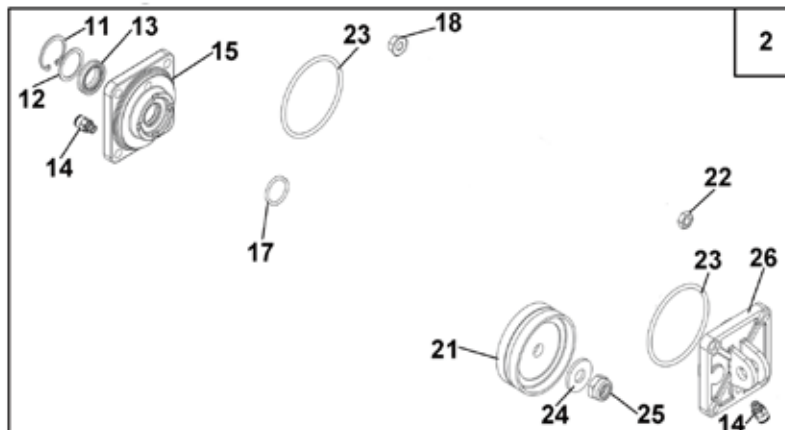
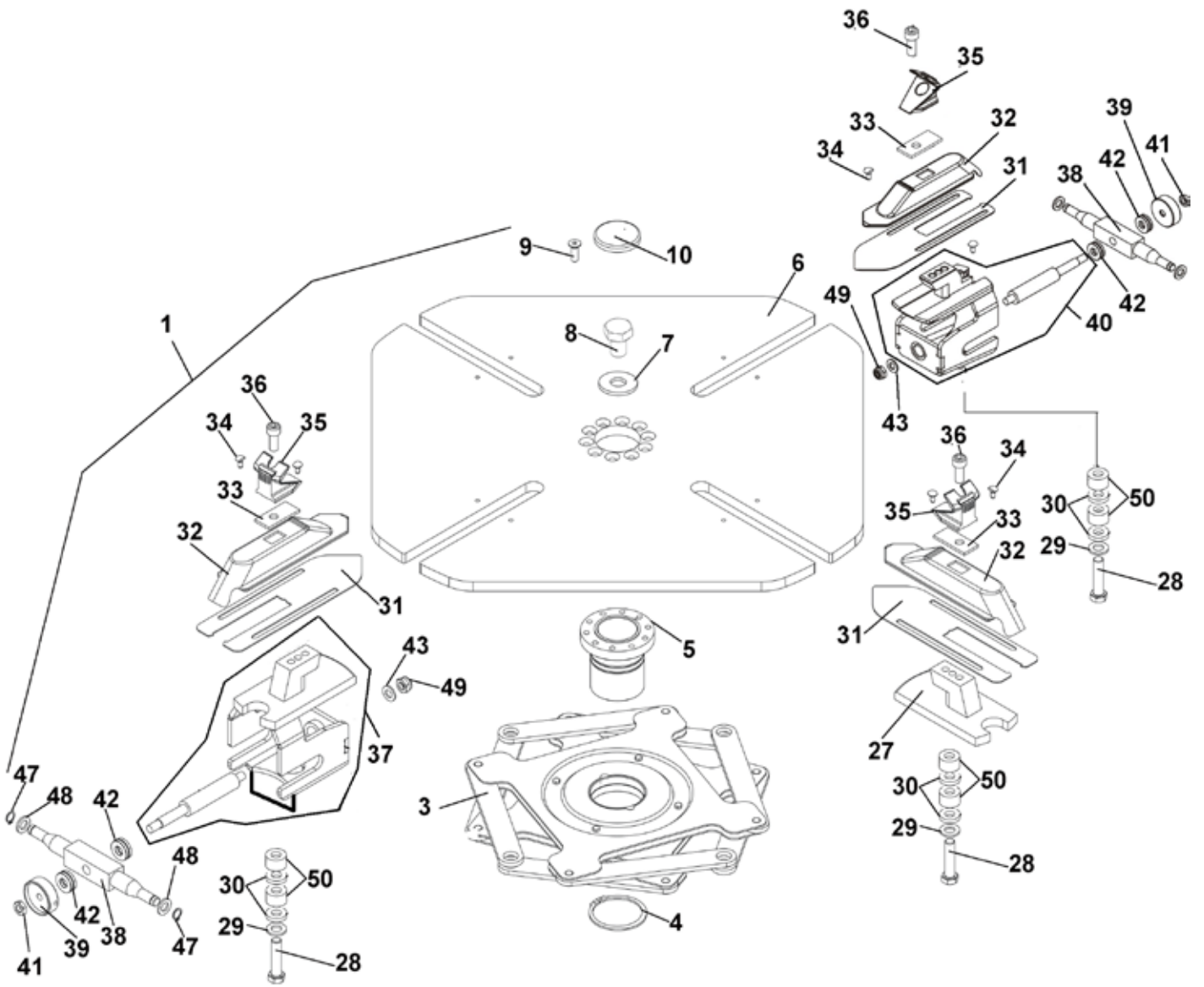


Rif. Ref.	Codice Code	Descrizione	Description
1	2002356	PEDALIERA	PEDAL CONTROL UNIT
3	2002529	GR.VALVOLA AUTOCENTRANTE	VALVE UNIT
4	2002528	GR.VALVOLA STALLONATORE	VALVE UNIT
5	3002443	PERNO VALVOLA STALLONATORE	BB D.E. VALVE ROD
6	4399889	DADO M 6 6S ZNT 5588	NUT M6
11	2002444	GR.VALVOLA LINEA SENZA PERNO	VALVE UNIT WITHOUT PIN
12	3001583	VALVOLA DISTRIB.-SENZA CHIAVET	DISTRIBUTION VALVE
13	3001584	DISTANZIALE X VALVOLA 3001583	SPACER FOR VALVE 3001583
14	3001585	FLANGIA X VALVOLA 3001583	BRIDE POUR SOUPEPE 3001583
15	4299000	ANELLO OR 9,8x3,85	JOINT OR 9,8x3,85
16	4399899	VITE AUTOF. TCIC 3,5x13 6954	SELF-TAPPING SCREW 3,5x13
17	4399274	VITE AUTOF. TCEI 5,5x26	SELF-TAPPING SCREW 5,5x26
18	4399998	RONDELLA 6 (6,4x12x1,6)ZNT6592	WASHER 6 (6,4x12x1,6)
19	4398783	SPINA ELASTICA D.4x24 6874	SPRING PIN D.4x24
20	3002442	PERNO X VALVOLA GRIFFE/RIBALT.	VALVE PIN
22	4198993	RACCORDO 6512 1/8"-6 S.R.	RAPIDE QUICK UNION 1/8"-6
23	4199929	RACCORDO 1631-01 1/8"	UNION 1/8"
24	4197819	RACCORDO 6610 1/8"" 8/6 S.RAP.	QUICK UNION 1/8" 8-6
25	4199928	RACCORDO 1631-02 1/8"	UNION 1/8"
26	4299911	BALESTRA A FORCELLA	FORKED LEAF SPRING
27	4299913	CAMMA DOPPIA	DOUBLE CAM
28	4299910	CAVALLOTTO GUIDA BIELLA	CONNECTING ROD GUIDE
29	4399891	VITE AUTOF.TC+ 2,9x6,5 ZNT	SELF-TAPPING SCREW 2,9x6,5
30	4299912	BIELLA PER CAMME	CONNECTING ROD
31	4193188	SILENZIATORE SPFL 1/8	SILENCER SPFL 1/8
32	3002159	PEDALE COM. AUTOC./STALL. ALL.	PEDAL
34	3002161	BASAMENTO PEDALIERA	PEDAL BOX BASE
35	3003095	PERNO ALLINEAMENTO PED. L.337	PEDALS ALINGMENT PIN L.337
36	4399864	ANELLO SEEGER E D.12 7435	SEEGER RING D.12
37	3007953	BOCCOLA D.18x12,5x21 PED.INV.	BUSH D.18x12,5x21
38	3017116	MOLLA COMANDO PEDALE	PEDAL CONTROL SPRING
39	3002157	PEDALE INVERT.	PEDAL
40	3018802	MOLLA RICH.PEDALE W.	PEDAL RETURN SPRING
41	3015342	STAFFA X SUPPORTO INVERT.	SUPPORT
42	3015341	BIELLA PER INVERTITORE	CONNECTING ROD
44	2015450	GR.INVERT. 3PH NEW 20A	REVERSER UNIT 3PH NEW 20A
44A	2015404	GR.INVERT. 1PH NEW 25A	REVERSER UNIT 1PH NEW 25A
45	3015340	SUPPORTO INVERTITORE	SUPPORT
46	3015345	PROTEZIONE X INVERT.	REVERSER COVER
47	4595380	INVERTIT. 25A SONTHEIMER	REVERSER 25A SONTHEIMER
48	3000175	LEVA INVERTITORE	REVERSER LEVER
49	4398723	VITE TE 6x12	SCREW 6x12
50	2001171	CAVO COLL.MOT.-INV. 3PH L=760	CONNECTING CABLE L=1500
51	2001512	CAVO ALIMENT. 3PH L=3110	FEEDING CABLE 3PH

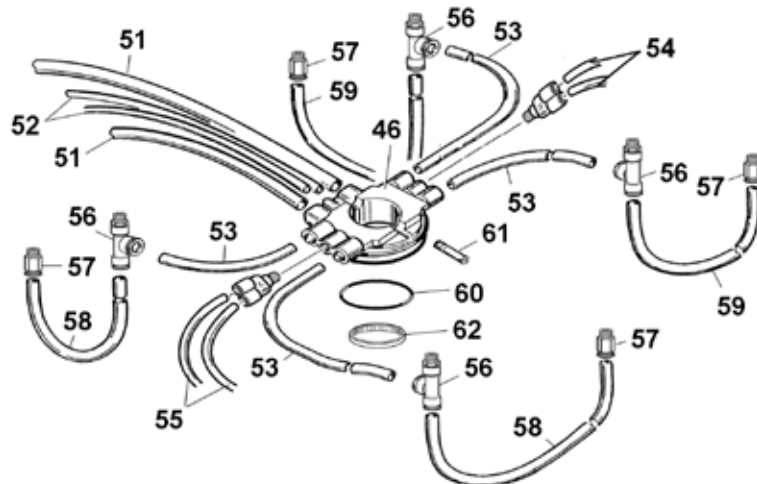
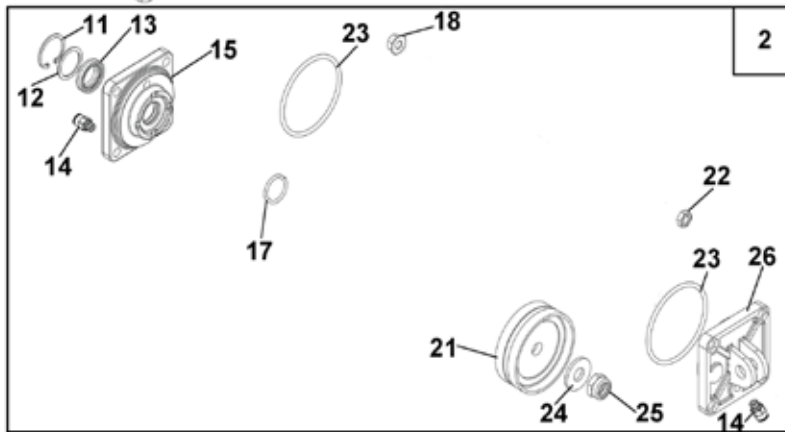
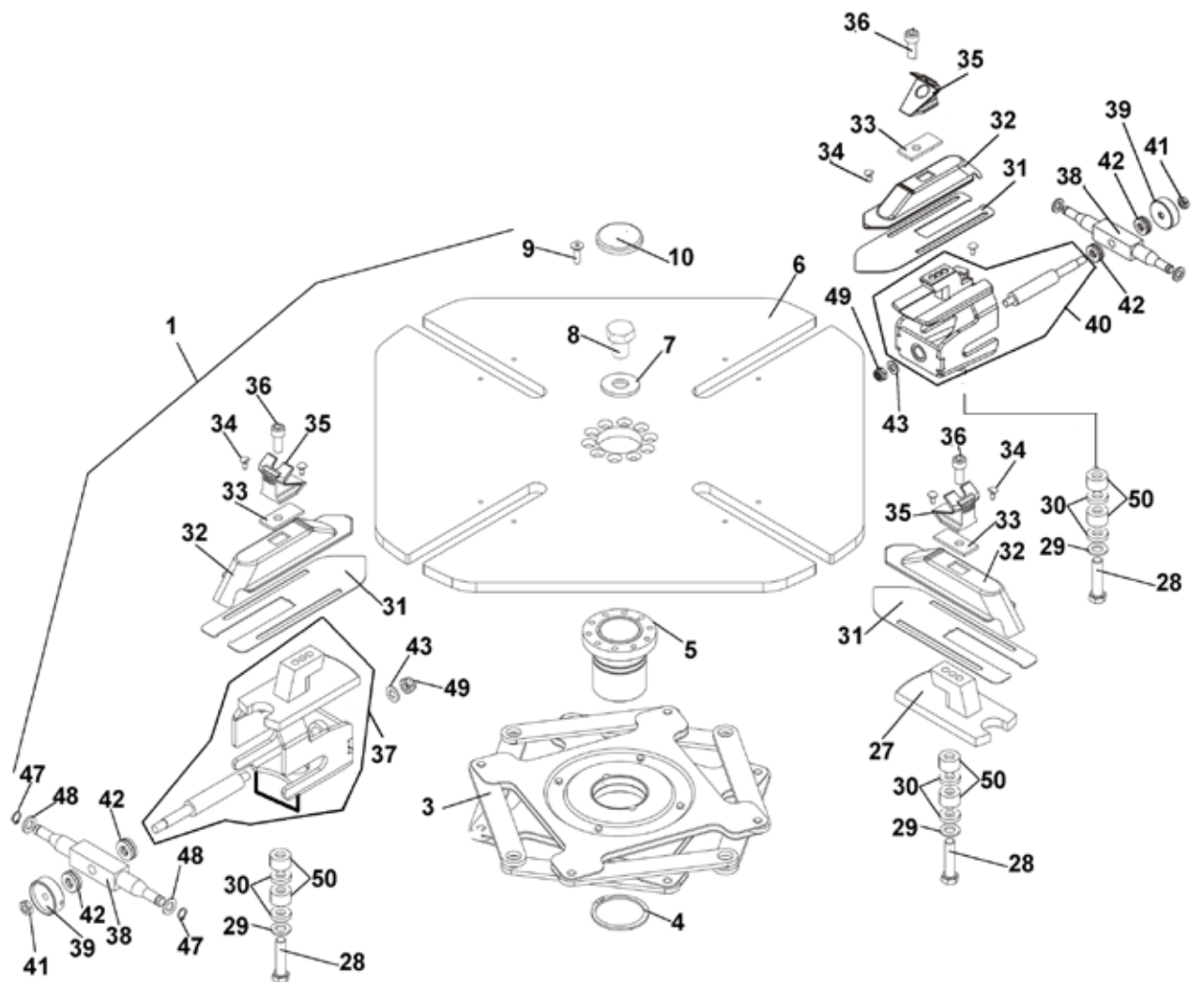
Rif. Ref.	Codice Code	Descrizione	Description
52	4599986	BLOCCAPASSAC.RETT.D.9 SB7 R/3	CABLE HOLDER D.9
53	3005604	DECALCO BOLLINO PE 27552 BSO	STICKER
54	4399905	VITE TE 4x12 8.8 5739	SCREW M4x12 8.8
55	4396106	DADO M 4 6S ZNT 5588	NUT M4
56	4399892	VITE TE 6x20 8.8 ZNT 5739	SCREW 6x20
57	4397734	VITE TCIC M 2,9x12,7 8.8 5931	SCREW 2,9x12,7
58	4399946	VITE TE 8x16 8.8 ZNT 5739	SCREW 8x16
59	4399829	RONDELLA 8 (8,4x16x1,5)ZNT6592	WASHER 8 (8,4x16x1,5)
60	4399900	DADO AUTOBL.M 8 BASSO 6.S 7474	SELF-LOCKING NUT M8
61	4399894	MOLLA TAZZA 8,2X18X1 UNI 8737 -	BELLEVILLE WASHER 8,2x18x1
62	4397649	VITE TE 6x50 8.8 PF ZNT 5737	SCREW 6x50 8.8
64	4399893	DADO AUTOBL.M 6 BASSO.6S. 7474	SELF-LOCKING NUT M6
65	4399044	VITE TCEI M 3x12 12.9 5931	SCREW 3x12 12,9



Rif. Ref.	Codice Code	Descrizione	Description
1	2012090	GR.CILINDRO STALLONATORE	BEAD BREAKER CYLINDER
2	4399976	DADO M 8 6S ZNT 5588	NUT M8
3	3000125	FONDELLO CILINDRO STALLONATORE	CYLINDER BASE
4	3000124	MOLLA CILINDRO STALLONATORE	SPRING
5	4399963	DADO AUTOBL.M16 BASSO.6S. 7474	SELF-LOCKING NUT M16
6	3000122	PISTONE CILINDRO STALLONATORE	PISTON
7	4299937	ANELLO TENUTA DE 725	GROMMET
8	3012091	ASTA PIST.STALL. D.16 L=465	PISTON SHAFT D.16 L=465
9	4399946	VITE TE 8x16 8.8 5739	SCREW M8x16 8.8
10	2012817	CILINDRO STALL. C. D.16 STND	BEAD BREAKER CYLINDER
11	4399943	VITE TCEI M12x35 12.9 5931	SCREW M12x35 12.9
12	3000117	BOCCOLA PER CILINDRO STALL.	BUSH
13	4296391	ANELLO GUIDA WRI 16	GUIDE RING
14	4296390	ANELLO RASCH.BID. NSW 16-26-5	SCRAPER
15	3013838	PERNO POSIZIONATORE SFILLO SNODO	PIN
16	3002117	AMMORTIZZ. D.17x63x12 POLIURET	SHOCK ABSORBER 17x63x12
17	3002832	SEDE AMMORTIZ.STALL.-NICHELAT.	SHOCK-ABSORBER BASE
18	2013890	GR.BRACCIO ST.+PALETTA	BEAD BREAKING ARM + BLADE
19	3000114	MOLLA BRACCIO STALLONATORE	BEAD BREAKER SPRING
20	4399945	VITE TE 16x100 8.8 P.F. 5737	SCREW 16x100 8.8
21	7012275	PALETTA STALLONATORE	BEAD BREAKING BLADE
22	3000143	TUBO RILSAN 6X4 L=480	RILSAN HOSE D.6x4 L=480
23	4299952	POMOLO D.14	KNOB D.14
24	4198808	SILENZIATORE 1/4" SPEC. D.24	SILENCER 1/4"
25	4396941	DADO M14 6S BASSO	NUT M14
26	4398899	MOLLA TAZZA 14,3x34x1,5	BELLEVILLE WASHER 14,3x34x1,5
27	7013868	BRACCIO STALL. MAXI	BEAD BREAKING ARM
28	4198993	RACCORDO 6510 1/8"-6 S.RAPIDO	QUICK UNION 1/8"-6
29	3013865	PERNO SNODO PALETTA-BRUNITO	PIN
30	4199671	VALVOLA SCARICO RAPIDO DA 1/4"	DUMP VALVE
31	4399979	ANELLO SEEGER E D.30 7435	SEEGER RING D.30
32	3000113	PERNO SFILABILE SNODO PALETTA	PIN
33	4399975	ANELLO SEEGER E D.20 7435	SEEGER RING D.20
34	4398878	VITE TCEI M 8x70 8.8 5931	SCREW 8x70
35	4399829	RONDELLA 8 (8,4x16x1,5)ZNT6592	WASHER 8 (8,4x16x1,5)
36	4399900	DADO AUTOBL.M 8 BASSO 6.S 7474	SELF-LOCKING NUT M8



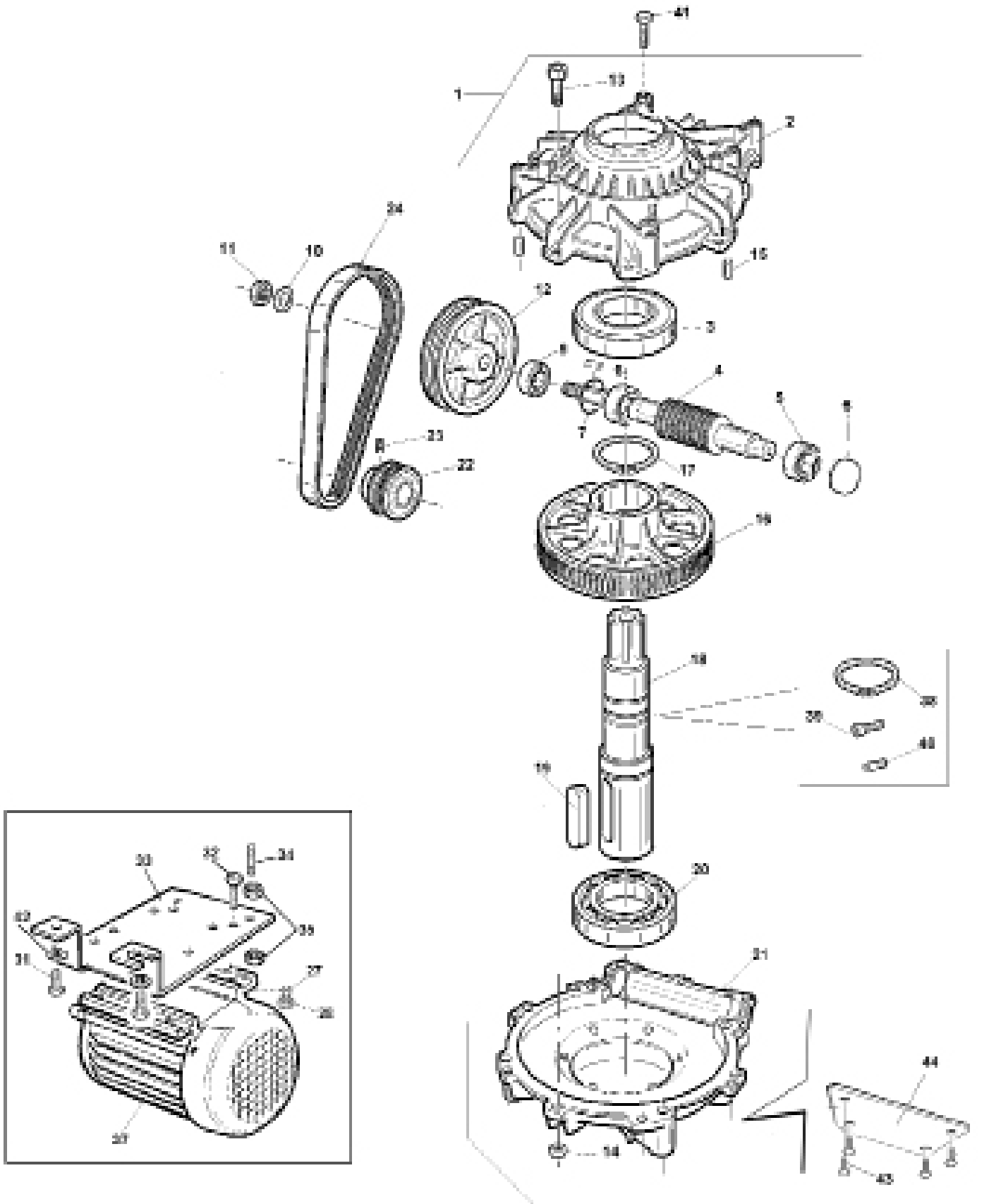
Rif. Ref.	Codice Code	Descrizione	Description
1	2039198	GR.AUTOCENTRANTE	TURNTABLE
2	2033767	GR.CILINDRO AUT.20" INT.	20" TURNTABLE CYLINDER
3	2036483	FLANGIA AUTOC.	18/19/20" TURNTABLE FLANGE
4	4399932	ANELLO SEEGER EST. D.62	SEEGER RING D.62
5	3036671	MOZZO FILETTATO +20	THREADED HUB
6	3036520	PIATTO AUTOCENTRANTE	TURNTABLE
7	3009778	RONDELLA SPEC. D.16x47x13-ZNT	WASHER D.16x47x13
8	4395179	VITE TE 16x1,5x45 8.8 ZNT 5740	SCREW TE 16x1,5x45 8.8 5740
9	4399391	VITE TSPEI M 8x25 10.9 ZNT 5933	SCREW 8x25
10	3000062	PROTEZIONE CENTRALE PIATTO	PROTECTION
11	3199599	ANELLO SEEGER I D.30 JV	SEEGER RING D.30
12	4398146	RASAMENTO 24x30x1	STEEL SHIM 24x30x1
13	3199601	ANELLO RASCH.BID.L7 NSW 20 30 6/CO	SCRAPER
14	4198954	RACCORDO 6512 1/8"-8 S.R.	QUICK UNION 1/8"
15	3015024	FLANGIA ANTER.D.75-PRF	FLANGE
17	4299168	ANELLO OR 3081 D.20,29x2,62	O-RING 20,29x2,62
18	4397678	DADO FLANGIATO M8 ZNT DIN 6923	FLANGED NUT M8
21	4198856	PISTONE MONOBLOCCO TDUOP D.75	PISTON D.75
22	4399976	DADO M 8 6S ZNT 5588	NUT M8
23	4298822	ANELLO OR 842 D.68,26x3,53	O-RING D.68,26x3,53
24	4398753	RONDELLA 12,5x30x3	WASHER D.12,5x30x3
25	4399865	DADO AUTOBL.M12 BASSO.6S.	SELF-LOCKING NUT M12
26	3015023	FLANGIA POSTER.D.75-PRF	FLANGE
27	3037890	GUIDA SCORREVOLE COMPLETA	COMPLETE SLIDE GUIDE
28	4392980	VITE TE 12x1,25x50 8.8PF	SCREW 12x1,25x50 8.8PF
29	4398637	RONDELLA 12x21x2,5	WASHER D.12x21x2,5
30	3036391	DISTANZIALE BIELLA DOPPIA GIOSTRA	FERRULE
31	3036382	PIASTRINA AUT.UNIF.	PLATE
32	3006255	SCORREVOLE UNIF.	SLIDE
33	3006877	SPESSORE SCORR.UNIF. 3,5	SHIM
34	3015187	PERNO GUIDA SCORREVOLE	GUIDE PIN
35	3002297	GRIFFA BLOCCAGGIO MAGGIORATA	CLAMP
36	4398037	VITE TCEI M10x1,25x25	SCREW 10x1,25x25
37	2039203	GUIDA SCORREVOLE CON CAVALLOTTO+ VITE	COMPLETE SLIDE GUIDE + SCREW
38	3036426	PERNO GUIDA SCORREVOLE REGOL.	PIN SLIDE GUIDE
39	3036628	GHIERA REGOLAZIONE SCORREVOLE	NUT ADJUSTING SLIDING
40	2039204	GUIDA SCORREVOLE SENZA CAVALL. + VITE	COMPLETE SLIDE GUIDE + SCREW
41	4399967	DADO M10 6S BASSO ZNT 5589	NUT M10
42	4293047	CUSCIN. REGGISPINTA A SFERE 51101	THRUST BEARING
43	4395085	RONDELLA 10 (10,5x25x2)ZNT6592	WASHER 10 (10,5x25x2)
46	4292635	RACCORDO GIREVOLE "DOPPIO Y"	ROTATING UNION DOUBLE Y
47	4399981	RONDELLA 12 (13x24x2,5)	WASHER 12 (13x24x2,5)
48	4399864	ANELLO SEEGER E D.12	SEEGER RING D.12
49	4399971	DADO AUTOBL.M10 BASSO.6S. 7474	SELF-LOCKING NUT M10
50	3017302	BOCCOLA 12/18/6,5	FERRULE 12/18/6,5



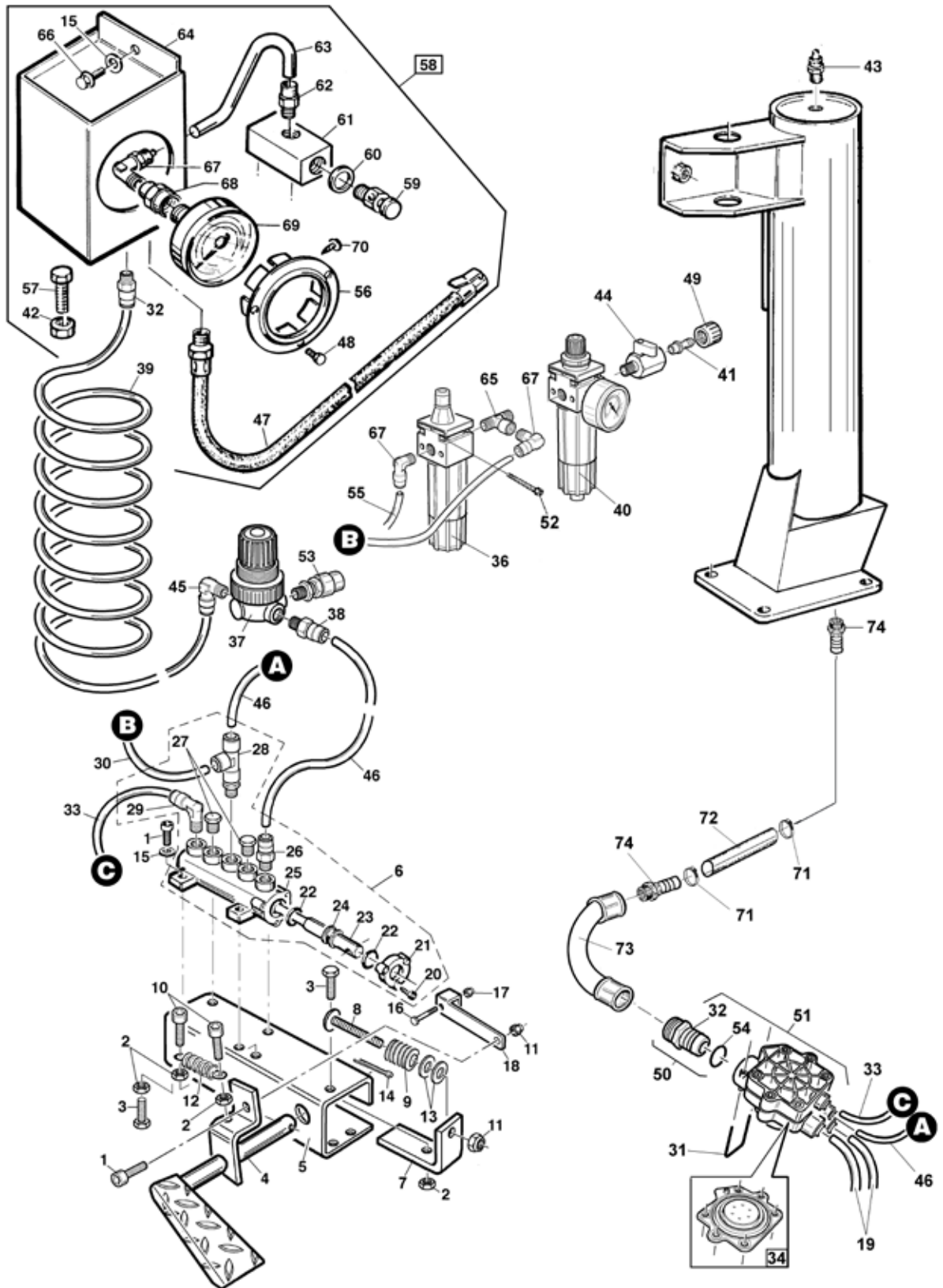
Rif. Ref.	Codice Code	Descrizione	Description
1	2039193	GR.AUTOCENTRANTE GT	TURNTABLE
2	2033767	GR.CILINDRO AUT.20" INT.	20" TURNTABLE CYLINDER
3	2036483	FLANGIA AUTOC.	18/19/20" TURNTABLE FLANGE
4	4399932	ANELLO SEEGER EST. D.62	SEEGER RING D.62
5	3032956	MOZZO FILETTATO	THREADED HUB
6	3038905	PIATTO AUTOCENTRANTE	TURNTABLE
7	3009778	RONDELLA SPEC. D.16x47x13-ZNT	WASHER D.16x47x13
8	4395179	VITE TE 16x1,5x45 8.8 ZNT 5740	SCREW TE 16x1,5x45 8.8 5740
9	4399391	VITE TSPEI M 8x25 10.9 ZNT 5933	SCREW 8x25
10	3000062	PROTEZIONE CENTRALE PIATTO	PROTECTION
11	3199599	ANELLO SEEGER I D.30 JV	SEEGER RING D.30
12	4398146	RASAMENTO 24x30x1	STEEL SHIM 24x30x1
13	3199601	ANELLO RASCH.BID.L7 NSW 20 30 6/CO	SCRAPER
14	4198954	RACCORDO 6512 1/8"-8 S.R.	QUICK UNION 1/8"
15	3015024	FLANGIA ANTER.D.75-PRF	FLANGE
17	4299168	ANELLO OR 3081 D.20,29x2,62	O-RING 20,29x2,62
18	4397678	DADO FLANGIATO M8 ZNT DIN 6923	FLANGED NUT M8
21	4198856	PISTONE MONOBLOCCO TDUOP D.75	PISTON D.75
22	4399976	DADO M 8 6S ZNT 5588	NUT M8
23	4298822	ANELLO OR 842 D.68,26x3,53	O-RING D.68,26x3,53
24	4398753	RONDELLA 12,5x30x3	WASHER D.12,5x30x3
25	4399865	DADO AUTOBL.M12 BASSO.6S.	SELF-LOCKING NUT M12
26	3015023	FLANGIA POSTER.D.75-PRF	FLANGE
27	3037890	GUIDA SCORREVOLE COMPLETA	COMPLETE SLIDE GUIDE
28	4392980	VITE TE 12x1,25x50 8.8PF	SCREW 12x1,25x50 8.8PF
29	4398637	RONDELLA 12x21x2,5	WASHER D.12x21x2,5
30	3036391	DISTANZIALE BIELLA DOPPIA GIOSTRA	FERRULE
31	3036382	PIASTRINA AUT.UNIF.	PLATE
32	2107387	SCORREVOLE UNIF.	SLIDE
33	3035956	SPESSORE SCORR.UNIF. 2 MM	SHIM
34	3015187	PERNO GUIDA SCORREVOLE	GUIDE PIN
35	3002297	GRIFFA BLOCCAGGIO MAGGIORATA	CLAMP
36	4398037	VITE TCEI M10x1,25x25	SCREW 10x1,25x25
37	2039203	GUIDA SCORREVOLE CON CAVALL.- ZNT V.	COMPLETE SLIDE GUIDE
38	3036426	PERNO GUIDA SCORREVOLE REGOL.	PIN SLIDE GUIDE
39	3036628	GHIERA REGOLAZIONE SCORREVOLE	NUT ADJUSTING SLIDING
40	2039204	GUIDA SCORREVOLE SENZA CAVALL.- ZNT V.	COMPLETE SLIDE GUIDE
41	4399967	DADO M10 6S BASSO ZNT 5589	NUT M10
42	4293047	CUSCIN. REGGISPINTA A SFERE 51101	THRUST BEARING
43	4395085	RONDELLA 10 (10,5x25x2)ZNT6592	WASHER 10 (10,5x25x2)
44	4196457	RACCORDO 6450 GIREV. 1/4"-8	UNION 6450 1/4"-8
45	4198954	RACCORDO 6512 1/8"-8 S.R. (DIRITTO+OR)	QUICK UNION 6512 1/8" -8 S.R.
46	4292638	RACCORDO GIREVOLE "DOPPIO Y" GT	ROTATING UNION GT DOUBLE Y
47	4399981	RONDELLA 12 (13x24x2,5)	WASHER 12 (13x24x2,5)
48	4399864	ANELLO SEEGER E D.12	SEEGER RING D.12
49	4399971	DADO AUTOBL.M10 BASSO.6S. 7474	SELF-LOCKING NUT M10
50	3017302	BOCCOLA 12/18/6,5	FERRULE 12/18/6,5
51	3002109	TUBO RILSAN 14X11 L=1070	RILSAN HOSE 14x11 L=1070
52	3099335	TUBO ELASTOLAN D. 8X6 L=750	HOSE 8x6 L=750
53	3006477	TUBO POLIUR.10X6,5 L=335	POLYURETHAN HOSE 10x6,5 L=335
54	3002218	SPIRALE RILSAN 8X6 L=420	RILSAN SPIRAL HOSE 8X6 L=420
55	3039197	TUBO ELASTOLAN D. 8X6 L=270	HOSE 8x6 L=270
56	4197207	RACCORDO "T" 1/8"-10/8 A.112	UNION TEE 1/8" 10-8
57	4198035	RACCORDO DRITTO 1/4"-10 A.112	UNION 1/4"
58	3039194	TUBO POLIUR.10X6,5 L=380	POLYURETHAN HOSE 10x6,5 L=380
59	3039195	TUBO POLIUR.10X6,5 L=400	POLYURETHAN HOSE 10x6,5 L=400
60	4297520	ANELLO OR 153 D.49,21x3,53	O-RING 153 D.49,21x3,53
61	3001996	VITE X RACC.GIREV.TUBL.	SCREW
62	3008646	DISTANZ. X OR GT (D.55 x 1,5)	O-RING SPACER (D.55x1,5)

Motori standard

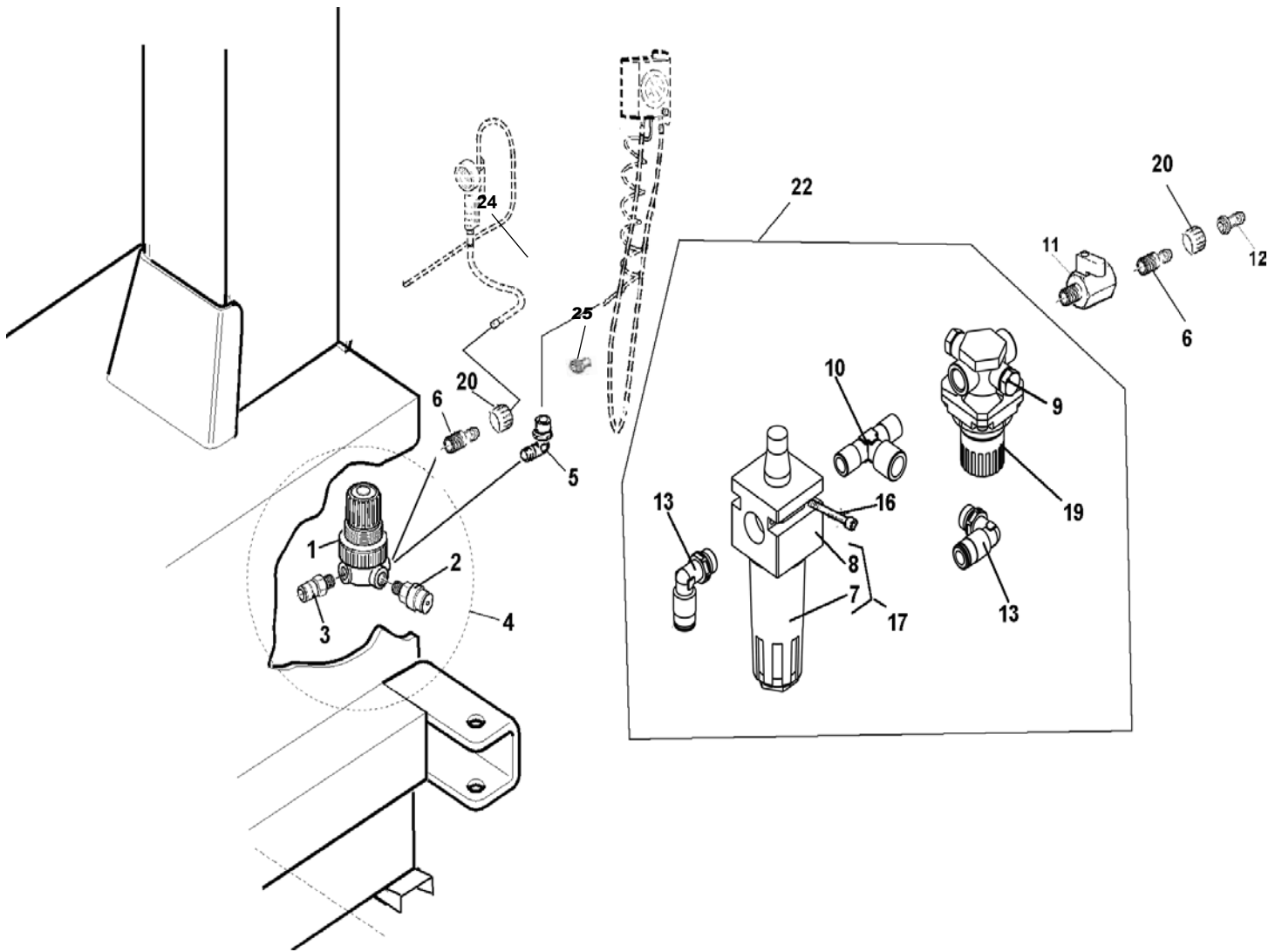
Standard motors



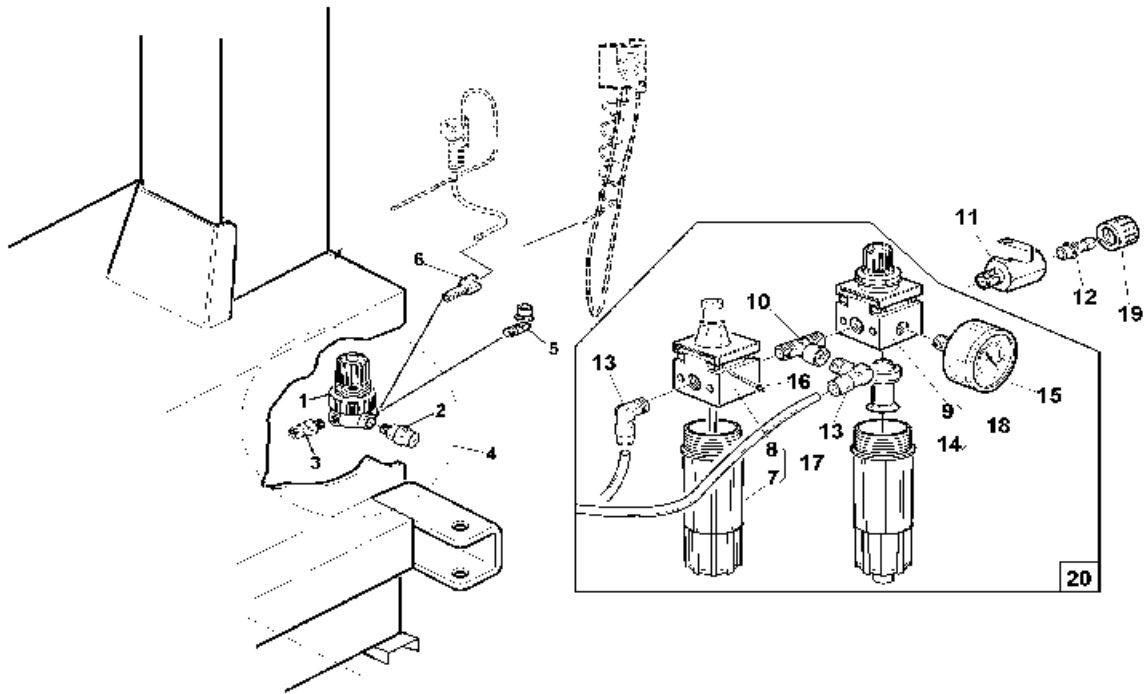
Rif. Ref.	Codice Code	Descrizione	Description
1	2010900	GR. RIDUTT. SMTG AUTO COMPL.	REDUCTION GEAR UNIT
2	3010872	SCATOLA SUPER. RIDUTT.	REDUCTION GEAR BOX
3	4296945	CUSCINETTO 6212 2RS 60x110x22	BEARING 60X110X22
4	3010883	VITE SENZA FINE RID.SMTG AUTO	WORM
5	4296944	CUSCINETTO RULLI CONICI 30204	BEARING
6	3017760	COPERCHIETTO TENUTA IN GOMMA	SEALING CAP
7	4294205	GUARNIZIONE FT D.40X35X4 NBR 75	SEAL D.40X35X4 NBR 75
8	4396947	LINGUETTA 6x6x18 (A) 6604	TAB 6X6X18
9	4296942	ANELLO TENUTA 20x35x10	O-RING 20X35X10
10	4398807	RONDELLA 14 (15x28x2,5)ZNT6592	WASHER 14 (15x28x2,5)
11	4396941	DADO M14 6S BASSO ZNT 5589	NUT M14
12	3010863	PULEGGIA RIDUTTORE	GEARBOX PULLEY
13	4399134	VITE TCEI M 8x30 8.8 5931	SCREW TCEI 8x30 8.8
14	4399900	DADO AUTOBL.M 8 BASSO 6.S 7474	SELF-LOCKING NUT M8
15	4396940	SPINA CIL.RETT. 8x20 6364A	PIN 8X20
16	3010884	RUOTA ELICOIDALE RID.-FINITA	HELICAL GEAR
17	4396946	ANELLO SEEGER E D.60x3 7436	SEEGER RING D.60X3
18	3010885	PERNO PER RUOTA ELICOID.	HELICAL GEAR STUD
19	4396948	LINGUETTA 16x10x70 (A) 6604	TAB 16X10X70
20	4296910	CUSCINETTO 6212 60x110x22	BEARING 60X110X22
21	3010873	SCATOLA INFERIORE RIDUTTORE	BOITE REDUCTEUR
22	3010864	PULEGGIA MOTORE	POULIE MOTEUR
23	4399922	VITE STEI 8x14 P.CIL. 5925	SCREW 8x14
24	4296813	CINGHIA PV 610 J6	BELT
27	4399829	RONDELLA 8 (8,4x16x1,5)ZNT6592	WASHER 8 (8,4x16x1,5)
28	4399976	DADO M 8 6S ZNT 5588	NUT M8
30	4398662	ROND.GROWER D.10 ZNT	GROWER WASHER D.10
31	4399966	VITE TE 10x20 8.8 5739	SCREW M10x20 - 8.8
32	4399935	VITE TE 8x25 8.8 5739	SCREW TE M8X25 8.8
33	3000149	SUPP. MOTORE	MOTOR SUPPORT
34	3031873	BARRA FILETTATA M10 L=65	THREADED BAR M10 L=65
37	4599924	MOTORE EL.3PH 230/400V 50Hz-SMTG T	MOTOR
37A	4598919	MOTORE 2v. 3PH 400V 50HZ	2v. MOT. 3PH 400V 50HZ KW 0,75/1,125
37B	4595016	MOTORE 1PH HP1,2 240V.50Hz	1PH HP1,2 240V.50Hz MOTOR
38	4396700	ANELLO SEEGER E D.50x2 7436	SEEGER RING D.50x2
39	4399964	VITE TE M 6x10	SCREW TE M6 x 10
40	3001996	VITE PER RACCORDO GIREVOLE GT	SCREW FOR ROTATING UNION GT
41	4398664	VITE TE 10x70 8.8 PF ZNT 5737	SCREW TE M10x70
42	4398662	ROND.GROWER D.10 ZNT 1751	GROWER WASHER D.10
43	4399120	VITE TSPEI M10x20 10.9 ZNT 5933	SCREW TSPEI M10x20 10.9 ZNT
44	3036098	ORECCHIA ATTACCO NERVATURA	COUPLING TAB



Rif. Ref.	Codice Code	Descrizione	Description
1	4399890	VITE TCEI M 6x20 8.8 5931	SCREW M6x20 - 8.8
2	4399889	DADO M 6 6S ZNT 5588	NUT M6
3	4399892	VITE TE 6x20 8.8 5739	SCREW M6x20 - 8.8
4	2110288	PEDALINO GT -ZINC. B.	GT PEDAL
5	3010287	SUPPORTO PEDAL. GT-ZINC.B.	GT PEDAL SUPPORT
6	2009718	GR.VALVOLA GT COATS 9010	VALVE UNIT
7	3008005	SUPP. VITE FINE CORSA-ZINC.B.	LIMIT STOP SCREW SUPPORT
8	4398890	BULL. TTLQS 6x40 4.6 ZNT 5732	BOLT 6x40 4.6
9	4298942	MOLLA GIALLA SL D.20x26	SPRING D.20x26
10	4399999	VITE TCEI M 6x25 8.8 5931	SCREW M6x25 - 8.8
11	4399893	DADO AUTOBL.M 6 BASSO.6S. 7474	SELF-LOCKING NUT M6
12	3000141	MOLLA RITORNO PEDALI	SPRING
13	4398807	RONDELLA 14 (15x28x2,5)ZNT6592	WASHER 14 (15x28x2,5)
14	4399100	COPIGLIA D.3,2X30 1336	SPLIT PIN D.3,2x30
15	4399998	RONDELLA 6 (6,4x12x1,6)ZNT6592	WASHER 6 (6,4x12x1,6)
16	4399897	VITE TE 4x25 8.8 P.F. 5737	SCREW M4x25 - 8.8
17	4399895	DADO AUTOBL.M 4 BASSO.6S. 7474	SELF-LOCKING NUT M4
18	3001853	LEVETTA COMANDO VALVOLA -ZNT	VALVE CONTROL LEVER
19	3012917	TUBO RILSAN 14X11 L=800 - F252	RILSAN HOSE D.14x11 L=800 - F252
20	4398999	VITE AUTOF. TCIC 3,5x13 6954	SELF-TAPPING SCREW 3,5x13
21	3001585	FLANGIA X VALVOLA 3001583	FLANGE for VALVE 3001583
22	4299000	ANELLO OR 9,8x3,85	O-RING 9,8x3,85
23	3001849	ASTA X VALVOLA PNEU. GT TN	GT PNEUMATIC VALVE SHAFT
24	3001584	DISTANZIALE X VALVOLA 3001583	SPACER FOR VALVE 3001583
25	3001583	VALVOLA DISTRIB.-SENZA CHIAVET	DISTRIBUTION VALVE
26	4198954	RACCORDO 6510 1/8"-8 S.RAPIDO	QUICK UNION 6510 1/8"-8
27	4199161	TAPPO MASCHIO 2611 1/8"	PLUG
28	4199888	RACCORDO "T" 1/8"-8/6 A.112	T-UNION
29	4199098	RACCORDO 6500 1/8" 6-4 S.RAPID	UNION 6500 1/8" 6-4
30	3001382	TUBO RILSAN D. 8X6 L=850	RILSAN HOSE D.8x6 L=850
31	3017494	FORCELLA "U"	U-FORK
32	3017573	RACCORDO INNESTO RAPIDO 1"-BRUN.	QUICK UNION
33	3002110	TUBO RILSAN 6X4 L=580	RILSAN HOSE D.6x4 L=580
34	2017495	MEMBRANA VALVOLA SOFFIAGGIO	VALVE DIAPHRAGM
36	4196481	LUBRIFIC.1/4" GRIGIO (PLAST.)	1/4" OILER
37	4198173	REGOLATORE 1/4" 0-3,5 BAR	REGULATOR 1/4" 0-3,5 BAR
38	4198884	RACCORDO 6510 1/4"-8 S.RAPIDO	UNION 6510 1/4"
39	2011017	GR. SPIRALE GT D.8-6 COMPL.	GT SPIRAL
40	4196480	FILTRO REG. 1/4" GRIGIO+MAN 0-16	FILTER 1/4"
41	4198938	RACCORDO 11021 1/4" M USA	UNION
42	4399976	DADO M 8 6S ZNT 5588	NUT M8
43	4199189	VALV.SIC. 1/4"0/12 BAR+RIV+CAPP	SAFETY VALVE 1/4" 0/12 BAR
44	4196354	VALVOLA MVS 2901 DF 1/4"	VALVE MVS 2901 DF 1/4"
45	4198578	RACCORDO 6520 1/4"-8/6 GIREV.	ROTATING UNION 1/4"-8/6
46	3010798	TUBO RILSAN D. 8x6 L=440	RILSAN HOSE D. 8x6 L=440
47	2008872	GR.TUBO CENTR. GT L=1400	GT CONTROL UNIT HOSE L=1400
48	4399038	VITE TE 4x8 8.8 5739	SCREW M4x8
49	4196344	ATTACCO BAIONETTA 100F 1/4"	UNION
50	2017906	GR.RACC. INNESTO RAP. + OR	QUICK UNION
51	2017491	GR.VALVOLA PNEUM. 1" COMPL.	PNEUM. VALVE UNIT 1"
52	4396593	VITE TCEI M 4x40 8.8 5931	SCREW M4x40 - 8.8
53	4198435	VALV.SIC. 1/8"0/4 BAR+RIV.+CAP.	SAFETY VALVE 1/8" 0/4 BAR
54	4294755	ANELLO OR 2100 D.25,12x1,78	O-RING 2100 D.25,12x1,78
55	3000144	TUBO RILSAN D. 8X6 L=910	RILSAN HOSE D.8x6 L=910
56	3002351	FLANGIA X MANOMETRO D.80	FLANGE FOR MANOMETER D.80
57	4399946	VITE TE 8x16 8.8 5739	SCREW M8x16 8.8
58	2006585	CENTRALINA PNEUM.GT KPA-PSI-BAR	GT PNEUM. CONTROL UNIT
59	4299354	PULSANTE DI SCARICO	RELIEF PUSHBUTTON
60	4399256	ROND. RAME 1/4" (13x19x1,5)	WASHER 1/4" D.13x19x1,5
61	3002353	RIPARTITORE X U.G.	DISTRIBUTION FRAME
62	4198993	RACCORDO 6510 1/8"-6 S.RAPIDO	QUICK UNION 1/8"-6
63	3002599	TUBO ELASTOLAN 6X4 L=170	ELASTOLAN HOSE 6x4 L=170
64	6602342	SCATOLA MANOMETRO GT-NERO BUC.	GT PRESSURE GAUGE UNIT
65	4198973	RACCORDO 2090 1/4" MFM	UNION
66	4399892	VITE TE 6x20 8.8 5739	SCREW M6x20 - 8.8
67	4198883	RACCORDO S6500 1/4"-8 S.RAPIDO	UNION S6500 1/4"-8
68	4198803	RIDUZIONE 2553 FF 1/4"-1/8"	REDUCTION 1/4"-1/8"
69	4198070	MANOMET.D.80 600KPA-6BAR-85PSI	PRESS. GAUGE
70	4398945	VITE AUTOPERFORANTE TCB 4x12,6	SCREW 4x12,6
71	4196440	FASCETTA A COLLARE L20 32-35	BAND
72	3012913	TUBO NL10 25/35 L=450	HOSE
73	4196357	CURVA 90' 1" F/F ART.2-ZNT	BEND 90' 1" F/F
74	4196442	ATTACCO PORTAGOMMA 9889 1"-25	CONNECTION



Rif. Ref.	Codice Code	Descrizione	Description
1	4198173	REGOLATORE 1/4" 0-3,5 BAR	REGULATOR 1/4" 0-3,5 BAR
2	4198435	VALV.SIC.1/8"0/4 BAR+RIV.+CAP.	SAFETY VALVE 1/8" 0/4 BAR
3	4198884	RACCORDO 6510 1/4"-8 S.RAPIDO	UNION 6510 1/4"
4	2010781	GR.REGOLAT.4 BAR USC. GT CE	4 BAR PRESSURE REGULATOR UNIT
5	4198578	RACCORDO 6520 1/4"-8/6 GIREV.	ROTATING UNION 1/4"-8/6
6	4199797	RACCORDO 9A/M 1/4"	UNION 9A/M 1/4"
7	4196316	TAZZA LUBRIFICATORE	LUBRICATOR CUP
8	4196315	CORPO LUBRIFICATORE	LUBRICATOR
9	4199161	TAPPO MASCHIO 2611 1/8	PLUG
10	4198973	RACCORDO 2070 1/4" MFM	UNION
11	4196354	VALVOLA MVS 2901 DF 1/4"	VALVE MVS 2901 DF 1/4"
12	4199987	ATTACCO RESCA 2P 1/4 8	UNION 1/4
13	4198883	RACCORDO 6500 1/4"-8 S.RAPIDO	QUICK UNION 6500 1/4"-8
16	4396593	VITE TCEI M 4x40 8.8	SCHRAUBE 4x40
17	4193489	LUBRIFIC.1/4"	LUBRICATOR
19	4198951	REGOLATORE 1/4" 0,5-10 BAR	REGULATOR
20	4199077	DADO FRESATO 11A 1/4"	NUT 1/4"
22	2038751	GRUPPO LUBRIFICATORE + REGOLATORE	LUBRICATOR
25	3007754	TAPPO RACC.CON GHIERA	UNION + RING NUT



Rif. Ref.	Codice Code	Descrizione	Description
1	4198173	REGOLATORE 1/4" 0-3,5 BAR	REGULATOR 1/4" 0-3,5 BAR
2	4198435	VALV.SIC.1/8"0/4 BAR+RIV	SAFETY VALVE 1/8" 0/4 BAR
3	4198884	RACCORDO 6510 1/4"-8 S.RAPIDO	UNION 6510 1/4"
4	2010781	GR.REGOLAT.4 BAR USC. GT CE	4 BAR PRESSURE REGULATOR UNIT
5	4198578	RACCORDO 6520 1/4"-8/6 GIREV.	ROTATING UNION 1/4"-8/6
6	4199797	RACCORDO 9A/M 1/4"	UNION 9A/M 1/4"
7	4196316	TAZZA LUBRIFICATORE	LUBRICATOR CUP
8	4196315	CORPO LUBRIFICATORE	LUBRICATOR
9	4196313	CORPO FILTRO REGOLATORE	FILTER BODY
10	4198973	RACCORDO 2070 1/4" MFM	UNION
11	4196354	VALVOLA MVS 2901 DF 1/4"	VALVE MVS 2901 DF 1/4"
12	4198938	RACCORDO 11021 1/4" M USA	UNION
13	4198883	RACCORDO 6500 1/4"-8 S.RAPIDO	QUICK UNION 6500 1/4"-8
14	4196314	TAZZA FILTRO REGOLATORE	FILTER CUP
15	4298308	MANOMETRO D.40 0-16 BAR 1/8"	PRESS. GAUGE D.40 0-16 BAR 1/8"
16	4396593	VITE TCEI M 4x40 8.8	SCREW 4x40
17	4196481	LUBRIFIC.1/4"	LUBRICATOR
18	4196480	FILTRO REG.	FILTER REGULATOR
19	4196344	ATTACCO BAIONETTA 100F 1/4"	UNION
20	2012307	GRUPPO LUBRIFICAT + FILTRO REG.	LUBRICATOR+FILTER REGULATOR



GIULIANO INDUSTRIAL S.p.a. - Via Guerrieri, 6 - 42015 Correggio (RE) ITALY