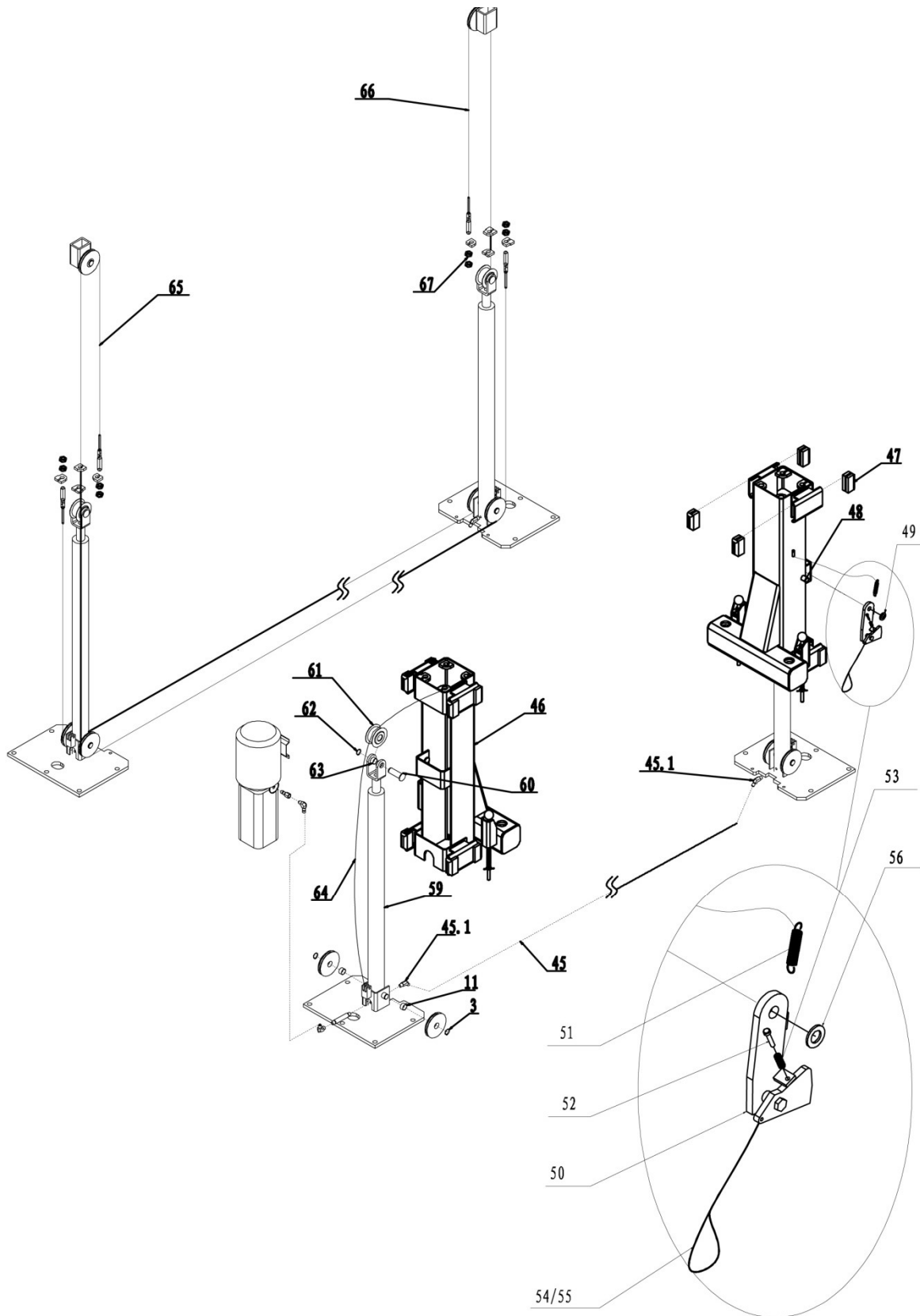
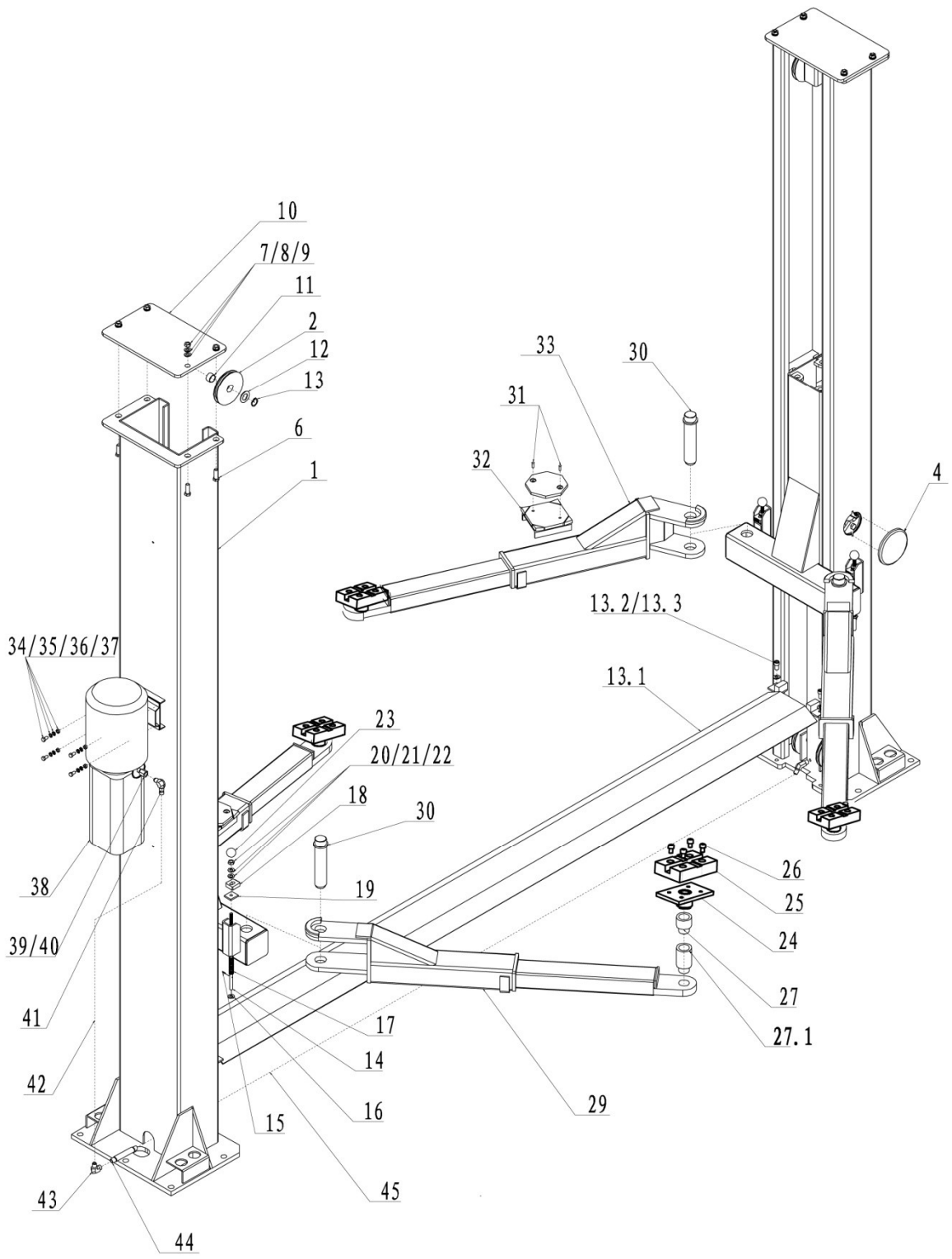


# Подъемник электрогидравлический, двухстоечный с нижней синхронизацией **NORDBERG N4120A-4T**





## Spare Parts List

No.	Chart Number	Name	Quantity	Picture
1	TPF4-100-00A(B)	Column jointing(L,R)	2	
2	TPF4-100-10-05	Pulley	6	
3	GB894.1-86	Spindle spring washer	6	
4	TPF4-100-12GM	Cover	2	
6	GB5781-86	Hexangular bolt C	8	
7	GB6170-86	Nut	8	
8	GB97.2-85	Flat washer	8	
9	GB93-87	Spring washer	8	
10	TPF4-100-13-01	Up board	2	
11		Bush	6	
12	GB95-85	Flat washer C	2	
13	GB894.2-86	Spindle spring washer A	2	
13.1	TPF4B-600G	Protective board	1	
13.2	GB70-85	Inner hexangular bolt	4	
13.3	GB97.2-85	Flat washer	4	
14	TPF4-200-11-01	Rack spindle	4	

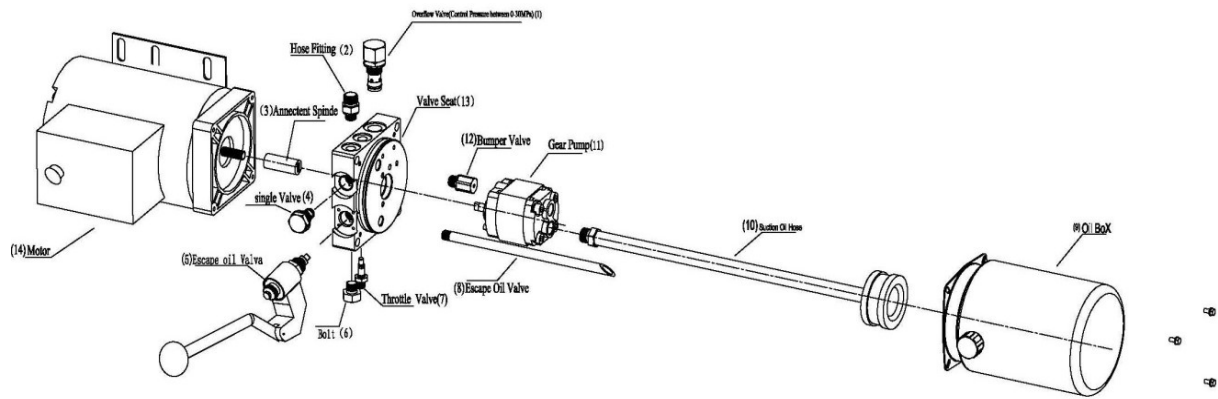
15	GB91-86	Shaft sheath	4	
16	GB97.2-85	Flat washer A	4	
17	TPF4-200-11-02	Spring	4	
18	TPF4-200-11-04	Rack board	4	
19	TPF4-200-11-05	Ramp board	4	
20	GB6170-86	Nut	4	
21	GB97.2-85	Flat washer	4	
22	GB93-87	Spring washer	4	
23		Ball handle	4	
24	TPF4-400-02-00	Salver jointing	4	
25	TPF4-400-01	Rubber washer	4	
26	GB97.1-2000	Inner hexangular screw	4	
27	TPF4-400-03	Short Adapter	4	
27.1	TPF4-400-03	Long Adapter	4	
29	TPF4-400-05-00M	Swing arms	2	
30	TPF4-400-06-00	Pin jointing	4	

31	GB819-85	Cross bolt	4	
32	TPF4-400-04-00	Salver jointing	2	
33	TPF4-400-05K-00A(B)M	Swing arms (L,R)	1 each	
34	GB5781-86	Hexangular bolt C	4	
35	GB6170-86	Nut	4	
36	GB97.2-85	Flat washer	4	
37	GB93-87	Spring washer	4	
38		Hydraulic pump	1	
39	TPF4-500-08	Washer	1	
40	TPF4-500-07	Hydraulic connection	1	
41	TPF4-500-05	Elbow fitting	1	
42	TPF4-500-12	Hose	1	
43	TPF4-500-06	Elbow fitting	1	
44	TPF4-500-02	Direct outside fitting	1	

45	TPF4-500-10	Hose	1	
45.1	TPF4-500-03	Direct outside fitting	2	
46	TPF4-200-01-00	Carriage jointing	2	
47	TPF4A-200-12	Nylon block	16	
48	GB91-86	Shaft sheath	2	
49	GB97.2-85	Flat washer	2	
50	TPF4-300-00	arrester jointing	2	
51	TPF4-300-02	Pull spring	2	
52	GB70-85	Inner hexangular bolt	2	
53	TPF4-300-09	Spring	2	
54	TPF4-300-05-01	Pull rope	2	
55	TPF4-300-05-02	Sleeve	4	
59	TPF4-500-01	Hydraulic cylinder	2	
60	TPF4-100-14-02	Spindle	2	
61	TPF4-100-14-01	Idler wheel	2	

62	GB8942-86	Spindle spring washer	2	
63		Spindle	4	
64	TPF4-800	Chain	2	
65	TPF4-900	Steel cable	1	
66	TPF4-900	Steel cable	1	
67		Nut	8	















# Power Unit Disassemble Diagram



1	Overflow Valve(Control Pressure between 0-30MPa)	
2	Hose Fitting	
3	Annectent Spinde	
4	Single Valve	
5	Escape Oil Valve	
6	Bolt	
7	Throttle Valve	
8	Escape Oil Hose	
9	Oil Box	
10	Suction Oil Hose	
11	Gear Pump(Overflow is 1.6ml/r,2ml/r,2.5ml/r)	
12	Bumper Valve	
13	Valve Seat	
14	Motor	





Serial number	Part Name	Quantity	Specification	Picture
1	Cylinder Tube	1		
2	Piston	1	45#	
3	Piston Ro	1		
4	Copper Washer	1	20	
5	Lock Nut	1	M20	
6	Limit Stop Collar	1	45#	
7	Dust Ring	1	38*46*7/9	
8	O-ring	1	23.6*3.55	
9	Seal Ring	1	48*63*t10	
10	Wear Strip	1	58*62.5*9.7; L=184mm	
11	Wear Strip	1	43*38*9.7; L=121mm	
12	Spring Fitter	1	14*2	
13	retaining ring for shaft	1	16	
14	hexagon socket set screws with cone point	1	NPT3/8-18	
15	Plastic Cap	1	Plastic	
16	Top Cap	1	45#	