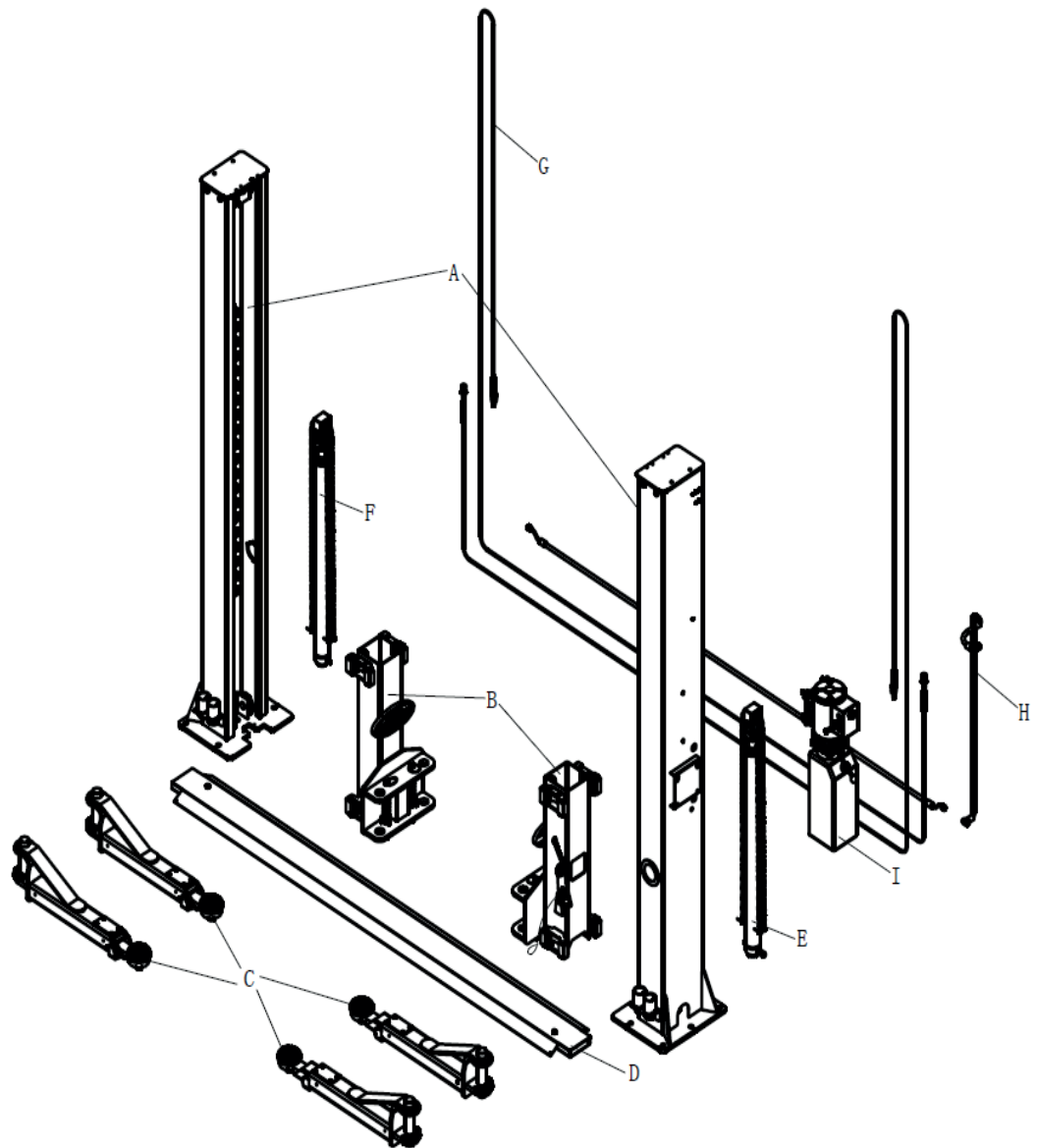
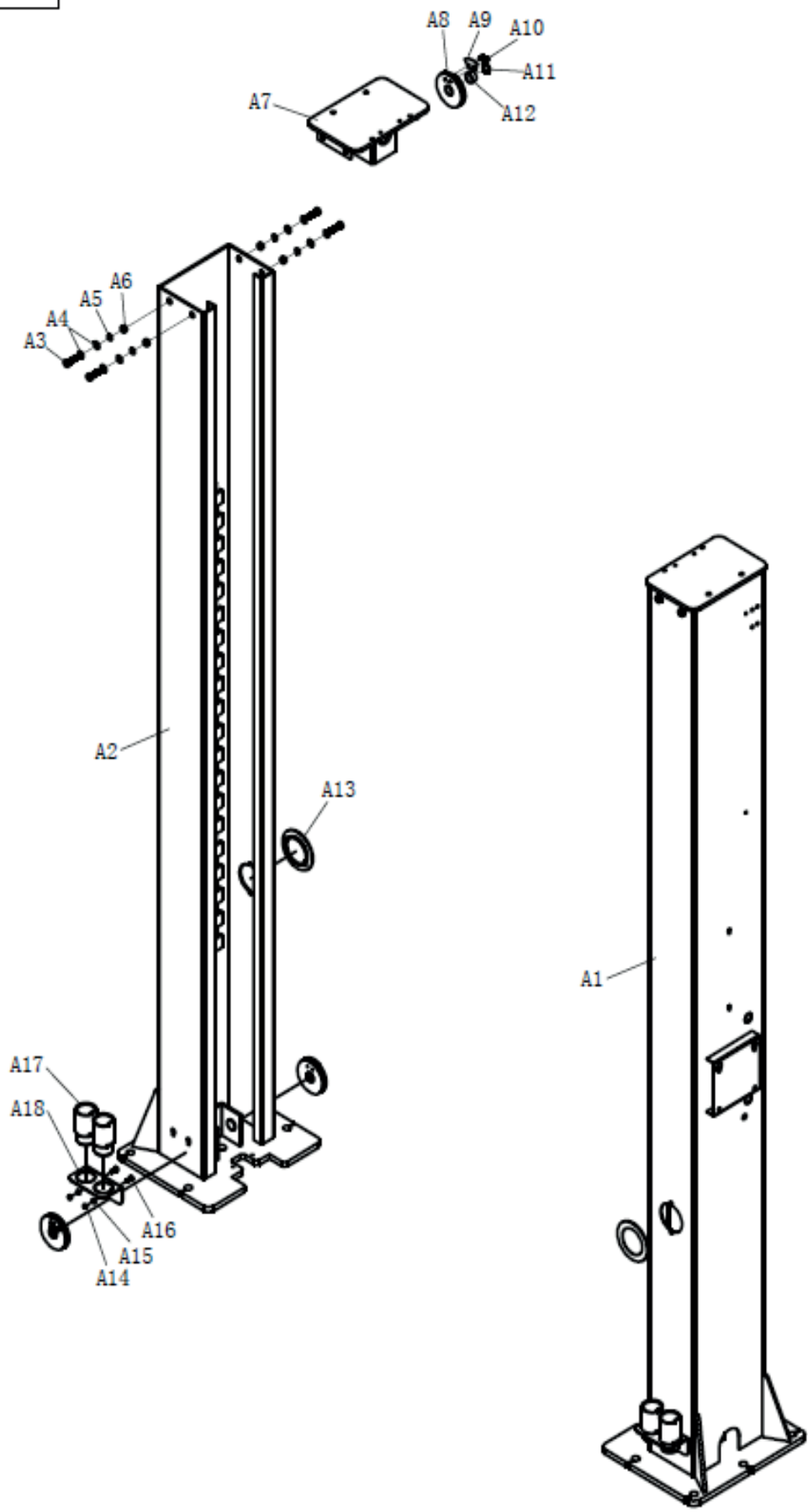


# Подъемник двухстоечный NORDBERG N4120B-4T

A	Column
B	Carriage
C	Lifting arm
D	Baseplate
E	Main oil cylinder
F	Sub oil cylinder
G	Wire rope
H	Oil pipes
I	Power unit

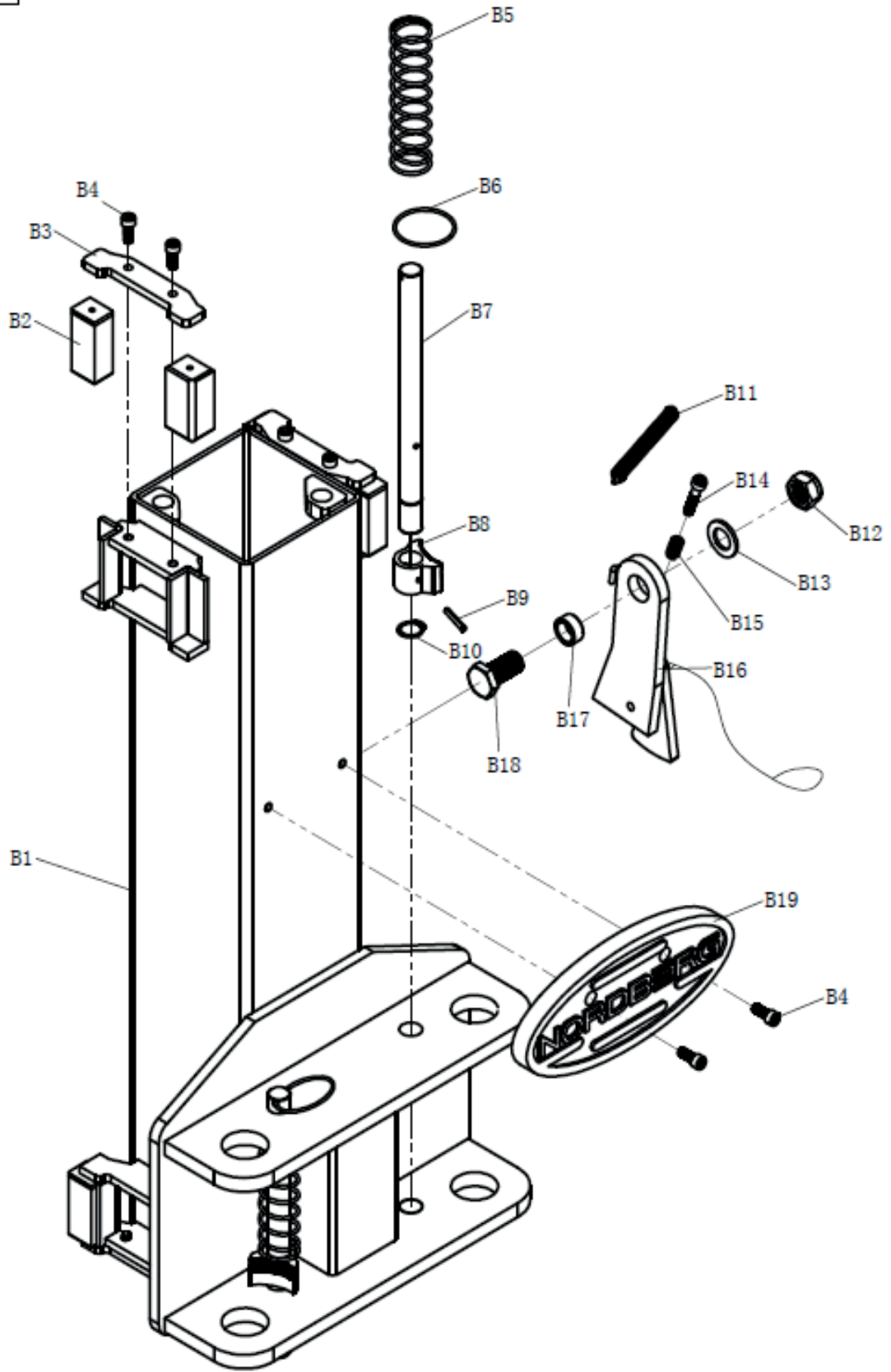


A



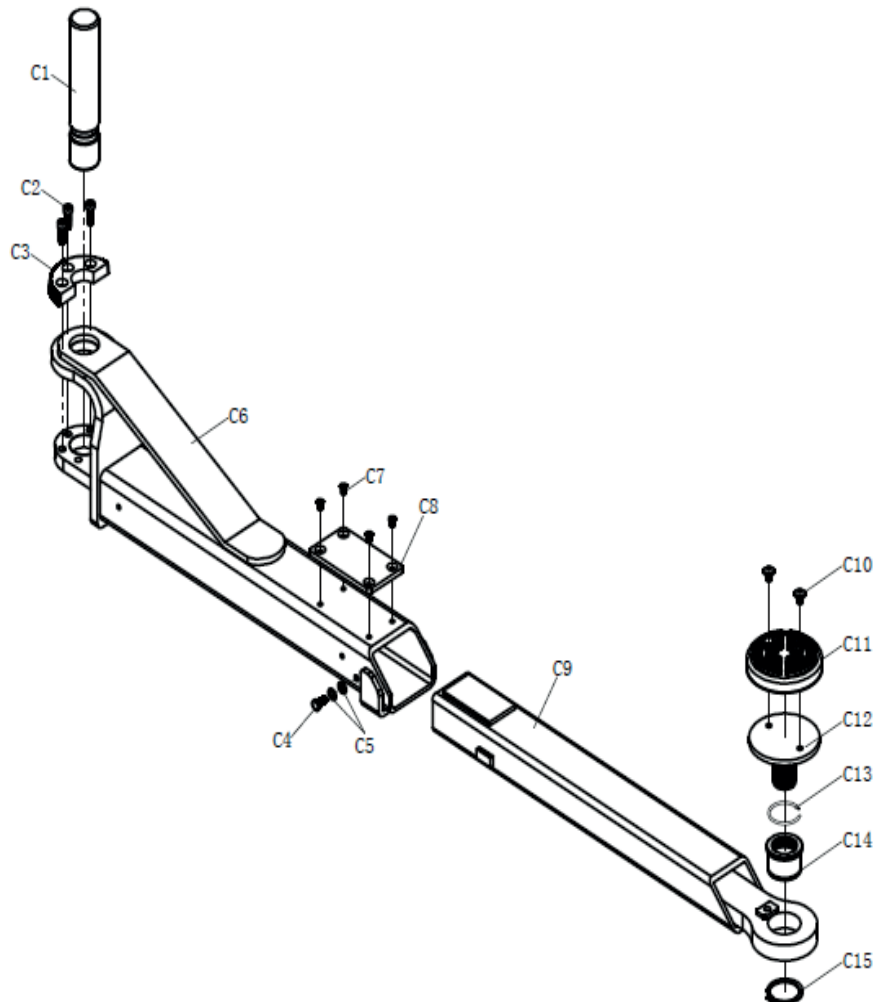
A1	TZ-T40-010000-0	main column assembly	1
A2	TZ-T40-020000-0	sub column assembly	1
A3	B-014-100351-0	hexagon head bolt full thread M10×35	8
A4	B-040-112020-1	plain washer Ø10	16
A5	B-050-100000-0	spring washer Ø10	8
A6	B-004-100001-1	hexagon nut M10	8
A7	TZ-40E-070000-0	top plate assembly	2
A8	TX-40E-000200-0	roller	6
A9	TX-40E-001800-0	steel cable damper	6
A10	B-014-050101-1	hexagon head bolt full thread M5×10	12
A11	B-055-250001-0	circlip for shaft Ø25	6
A12	S-011-282515-0	shaft steel sleeve 282515	6
A13	S-300-850000-0	safety decorate box	2
A14	B-004-060001-1	hexagon nut M6	8
A15	B-040-061216-1	plain washer Ø6	8
A16	B-012-060200-0	cup head square neck bolt with large head M6×20	4
A17	TG-TEH-000070-1	higher column 70mm	4
A18	TZ-40E-001300-0	higher column support	2

B



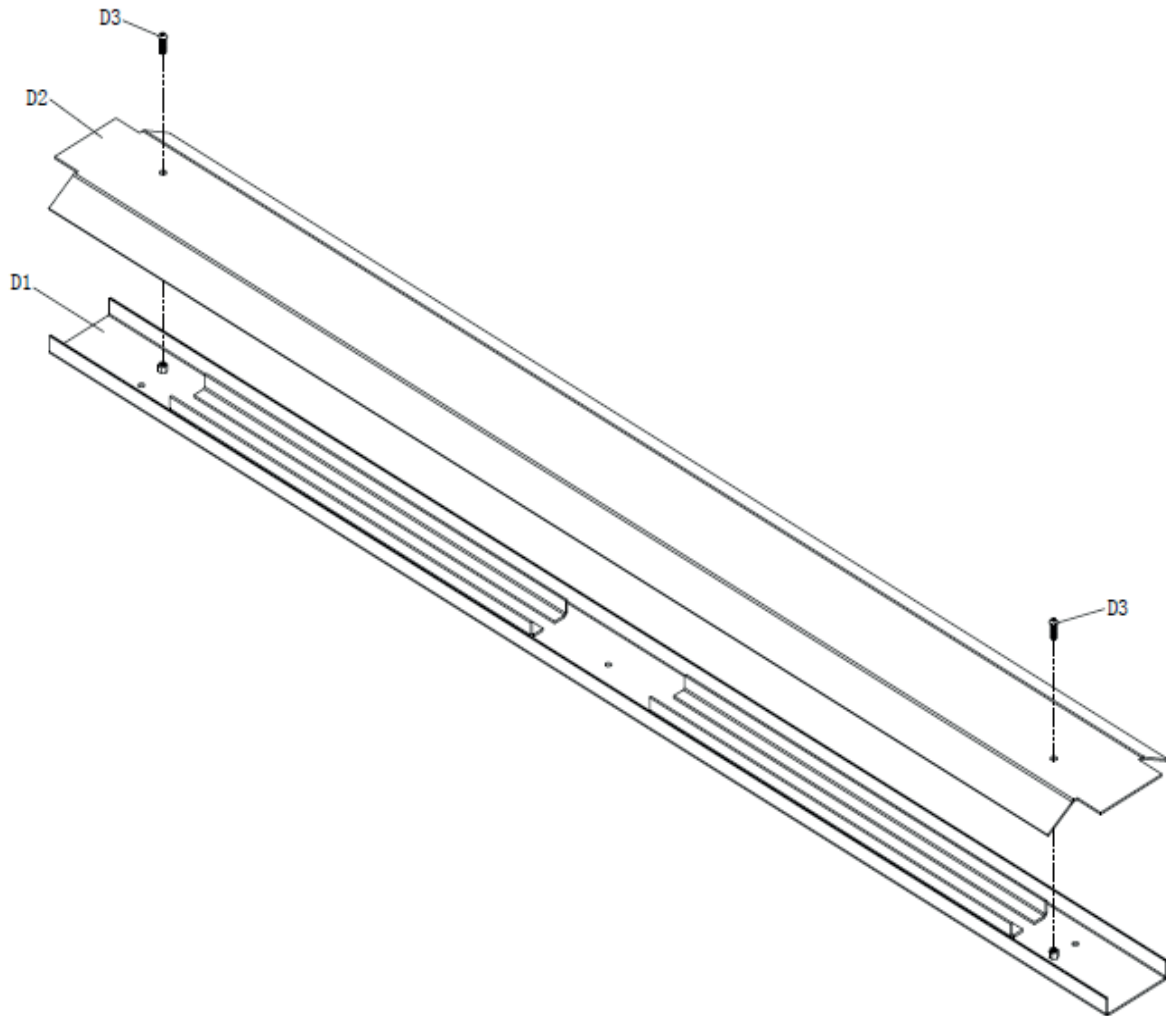
B1	TZ-T40-030000-Z	carriage assembly	2
B2	TG-40E-000100-0	slider	16
B3	TX-40E-003100-0	slider press plate	8
B4	B-010-080201-0	hexagon socket head cap screw M8×20	20
B5	B-056-025601-0	key ring	4
B6	TG-TEH-000900-0	locking shaft spring	4
B7	TZ-40E-000700-0	locking shaft	4
B8	S-030-123456-3	semi-circle block (small)	4
B9	B-071-005035-0	spring-type straight pin Ø5×35	4
B10	B-055-220001-0	circlip for shaft Ø22	4
B11	S-011-151470-0	tension spring	2
B12	B-004-200001-2	hexagon locking nut M20	2
B13	B-040-223730-1	plain washer Ø20	2
B14	B-010-080401-0	hexagon socket head cap screw M8×40	2
B15	/	compressed spring	2
B16	TG-T40-040000-0	insurance assembly	2
B17	TX-T40-000100-0	guide bushing	2
B18	B-010-200401-0	hexagon head bolt full thread M20×40	2
B19	S-420-285035-1	ellipse protection rubber mat	2

c



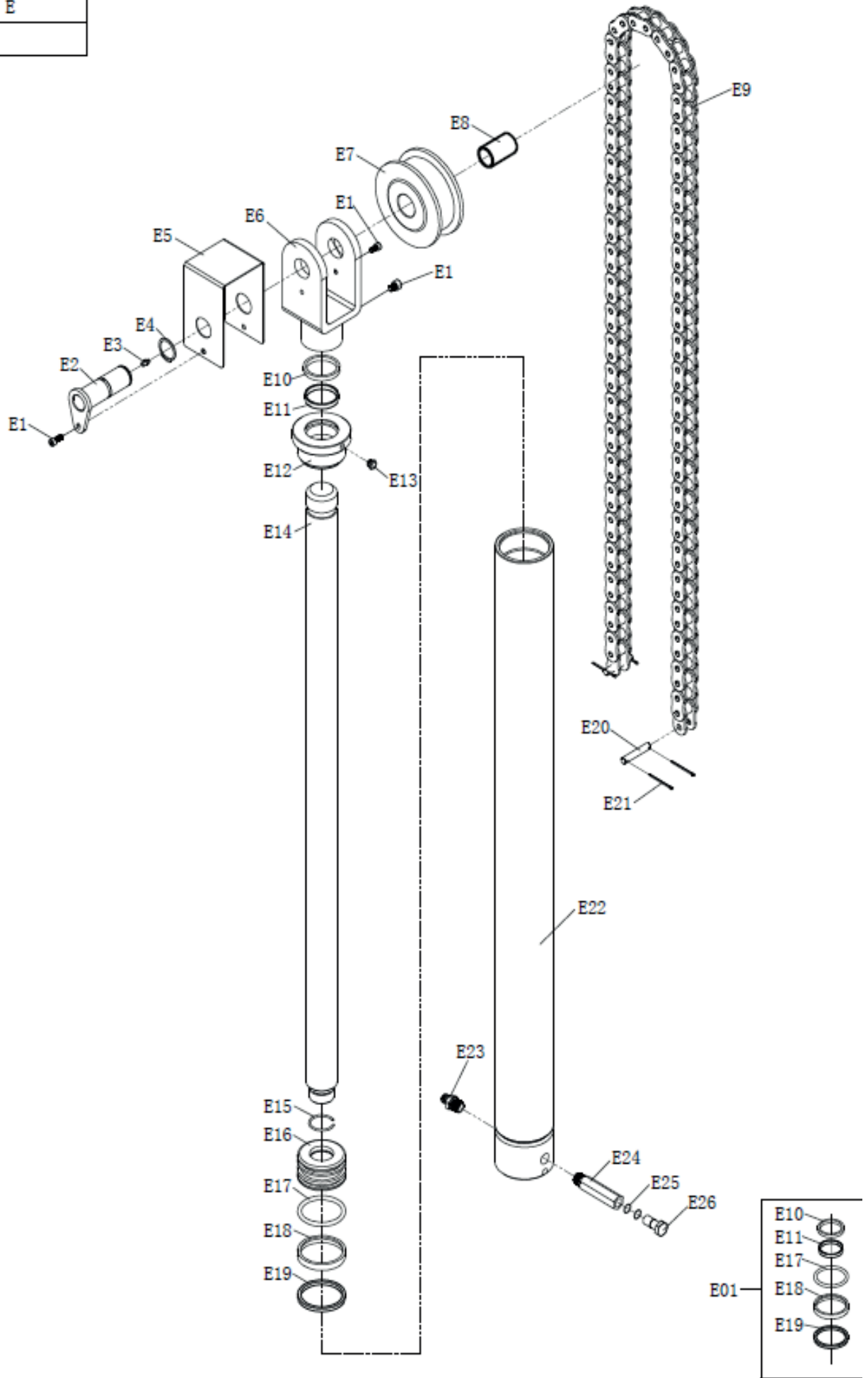
C1	TZ-40E-000400-0	arm pin	4
C2	B-010-100251-0	hexagon socket head cap screw M10×25	12
C3	S-030-123456-2	semi-circle block (big)	4
C4	B-014-080161-1	hexagon head bolt full thread M8×16	4
C5	B-040-091616-1	plain washer Ø8	12
C6	TZ-40E-050000-0	outside lifting arm assembly	4
C7	B-017-060121-0	cross recessed countersunk head screw M6×10	16
C8	TG-40E-001600-0	arm rubber mat	4
C9	TZ-40E-040000-0	inside lifting arm assembly	4
C10	B-010-080121-1	hexagon socket button head screw M8×12	8
C11	S-013-107000-1	rubber mat Ø115	4
C12	/	support cushion screw rod	4
C13	/	steel cable for shaft Ø32	4
C14	/	support cushion screw seat	4
C15	B-055-500001-0	circlip for shaft Ø50	4

D
---



D1	TZ-40E-060000-0	oil hose slot board assembly	1
D2	/	oil hose cover	1
D3	B-012-100400-0	hexagon socket button head screw M10×35	2

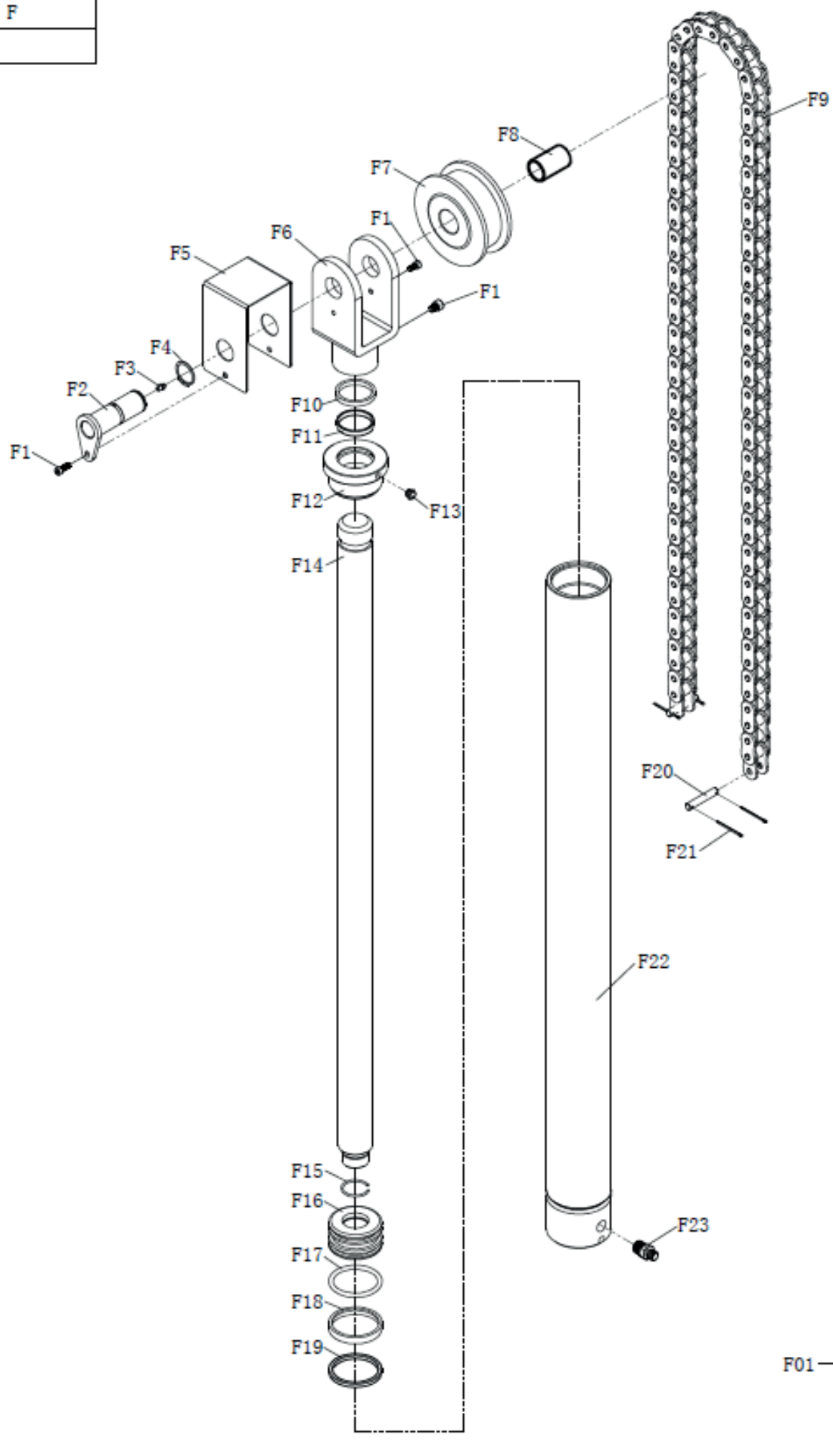
E



E1	B-010-060121-0	hexagon socket head cap screw M6×12	3
E2	TX-40E-240000-0	chain roller shaft assembly	1
E3	S-023-000006-0	grease nipple M6	1
E4	B-055-250001-0	circlip for shaft Ø25	1
E5	TX-40E-001200-0	chain beffle	1
E6	C-030-T40000-20	chain roller support assembly	1
E7	TG-40E-001000-0	chain roller	1
E8	S-011-282545-0	shaft steel sleeve 282545	1
E9	S-300-LH1244-0	plate chain	1
E10	C-030-T40000-16	dust-proof ring Ø38×46×6.5	1
E11	/	wear ring Ø38×6×2	1
E12	/	oil cylinder cover	1
E13	/	muffler	1
E14	/	piston rod	1
E15	/	steel cable circlip for hole Ø30	1
E16	/	piston	1
E17	C-030-T40000-17	O-ring Ø63×5.7	1
E18	/	wear ring Ø63×10×2.5	1
E19	C-030-T40000-19	U- ring Ø63×53×6	1
E20	/	chain fixing shaft	2
E21	B-070-025000-0	split pin Ø2.5×40	4
E22	/	main oil cylinder assembly	1
E23	S-011-141938-0	oil hose straight joint inner cone G1/4--R3/8	1
E24	S-020-G14R14-1	safety valve joint inner thread G1/4--R3/8 57mm	1
E25	B-042-220001-0	combined sealing washer Ø14	2
E26	S-020-720110-3	english hinged bolt G1/4	1
E01	C-030-T40000-02	oil cylinder seal kit	1

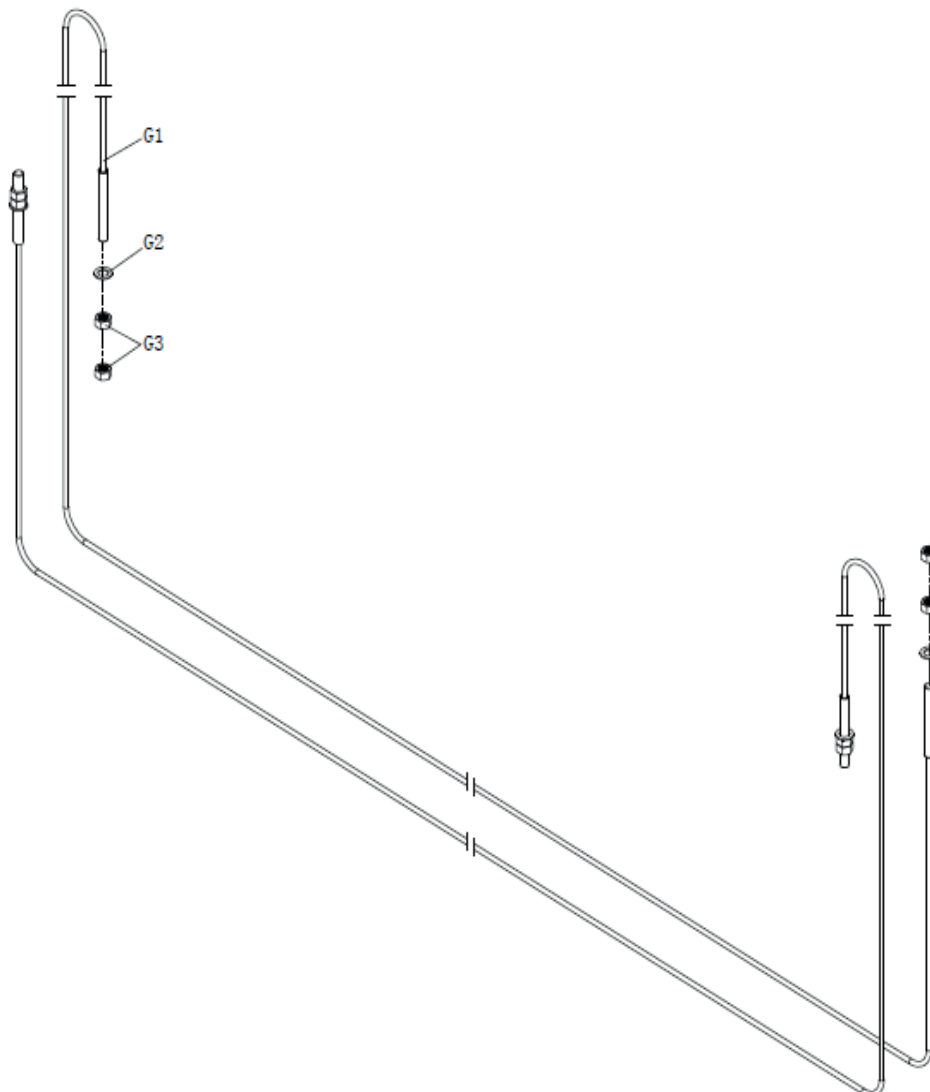


F



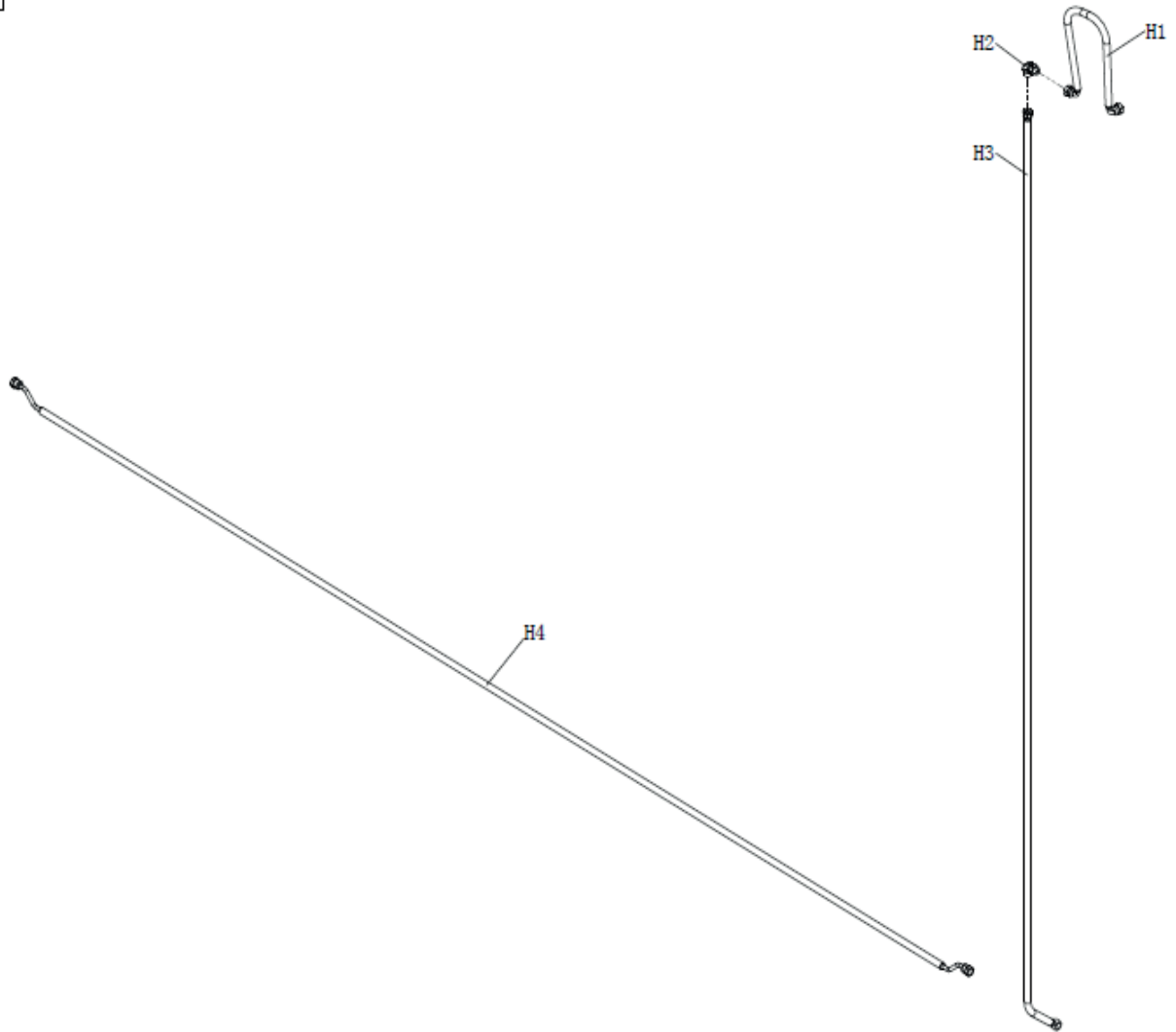
F1	B-010-060121-0	hexagon socket head cap screw M6×12	3
F2	TX-40E-240000-0	chain roller shaft assembly	1
F3	S-023-000006-0	grease nipple M6	1
F4	B-055-250001-0	circlip for shaft Ø25	1
F5	TX-40E-001200-0	chain beffle	1
F6	C-030-T40000-20	chain roller support assembly	1
F7	TG-40E-001000-0	chain roller	1
F8	S-011-282545-0	shaft steel sleeve 282545	1
F9	S-300-LH1244-0	plate chain	1
F10	C-030-T40000-16	dust-proof ring Ø38×46×6.5	1
F11	/	wear ring Ø38×6×2	1
F12	/	oil cylinder cover	1
F13	/	muffler	1
F14	/	piston rod	1
F15	/	steel cable circlip for hole Ø30	1
F16	/	piston	1
F17	C-030-T40000-17	O-ring Ø63×5.7	1
F18	/	wear ring Ø63×10×2.5	1
F19	C-030-T40000-19	U- ring Ø63×53×6	1
F20	/	chain fixing shaft	2
F21	/	split pin Ø2.5×40	4
F22	/	sub oil cylinder assembly	1
F23	S-020-G14R38-1	safety valve joint inner cone G1/4-- R3/8	1
F01	C-030-T40000-02	oil cylinder seal kit	1

G

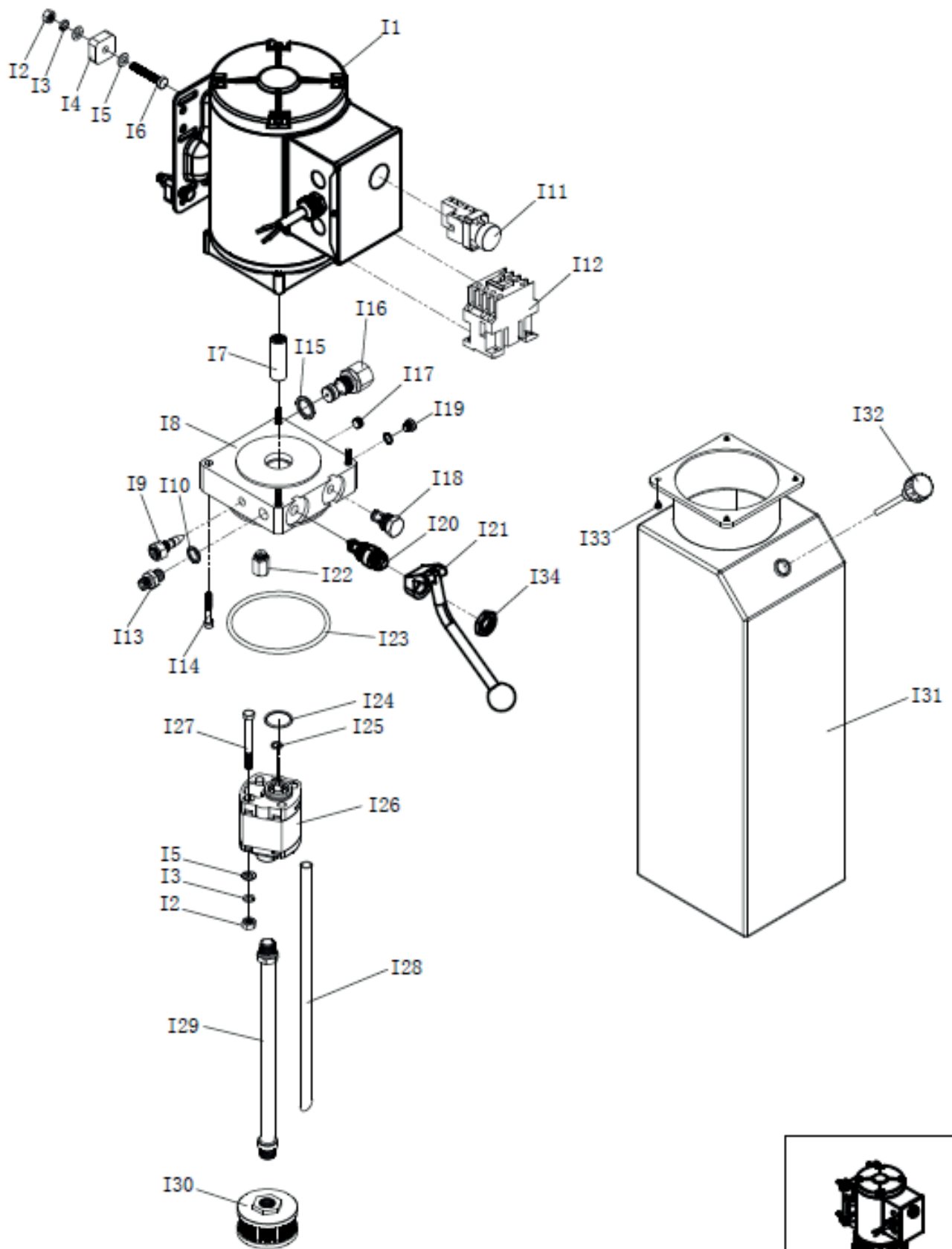


G1	TZ-40E-080000-0	steel cable assembly	2
G2	B-040-173030-1	plain washer Ø16	4
G3	B-004-160001-0	hexagon nut M16	8

H



H1	Q-40E-000300-0	high-pressure oil pipe 300mm	1
H2	S-020-JT105L-1	oil hose baffle elbow joint inner cone 2-G1/4	1
H3	Q-T40-000990-0	high-pressure oil pipe 990mm	1
H4	Q-40E-002720-0	high-pressure oil pipe 2720mm	1



I01



I1	S-048-380503-1	3ph motor	1
I1( optional)	S-048-220501-Z	1ph motor	1
I2	B-004-080001-1	hexagon nut M8	6
I3	B-050-080000-0	spring washer Ø8	6
I4	TG-TEH-001800-0	motor cushion	4
I5	B-040-091616-1	plain washer Ø8	10
I6	B-014-080351-0	hexagon head bolt full thread M8×35	4
I7	/	coupling	1
I8	/	center valve block	1
I9	/	Throttling valve	1
I10	B-042-220001-0	combined sealing washer Ø14	3
I11	/	lift button switch 1NO	1
I12	/	AC contactor	1
I13	S-011-010400-12	oil pipe straight union inner cone G1/4--end face G1/4	1
I14		hexagon socket head cap screw M6×40	4
I15	S-048-000025-G	combined sealing washer Ø20	1
I16	S-048-000004-Z	overflow valve	1
I17	S-048-000026-G	plug G3/8	1
I18	S-048-000005-Z	one-way valve	1
I19	/	plug M14	1
I20	S-048-000003-Z	unloading valve	1
I21	S-048-000028-G	manual down handle	1
I22	S-048-000020-G	cushion valve	1
I23	S-048-000033-G	O-ring Ø109×5.3	1
I24	S-048-000030-G	O-ring Ø32×2.4	1
I25	S-048-000031-G	rectangle seal ring Ø9.5×1.7	1
I26	S-056-220000-0	gear pump	1
I26( optional)	S-048-000021-1	gear pump	1
I27	B-010-080801-0	hexagon socket head cap screw M8×80	4
I28	/	return tube	1
I29	/	suction tube	1
I30	S-048-000010-G	filter	1
I31	S-016-080000-0	oil tank	1
I32	S-304-060400-0	oil tank cap	1
I33	/	hexagon flange bolt M5×18	4
I34	S-048-000029-G	hexagon thin nut M20×1.5	1
I01	S-058-380027-1	power unit assembly	1
I01( optional)	S-058-220021-3	power unit assembly	1