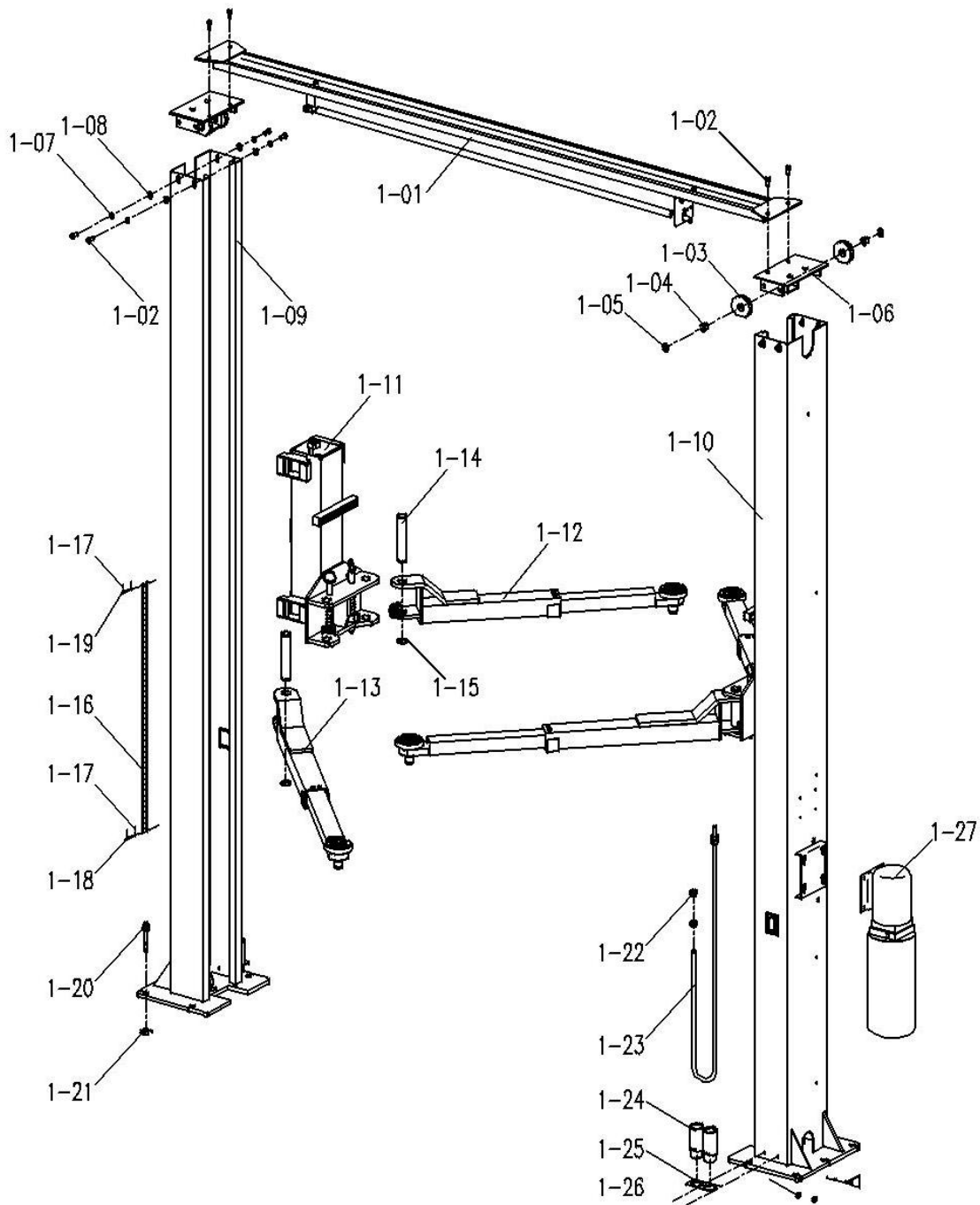
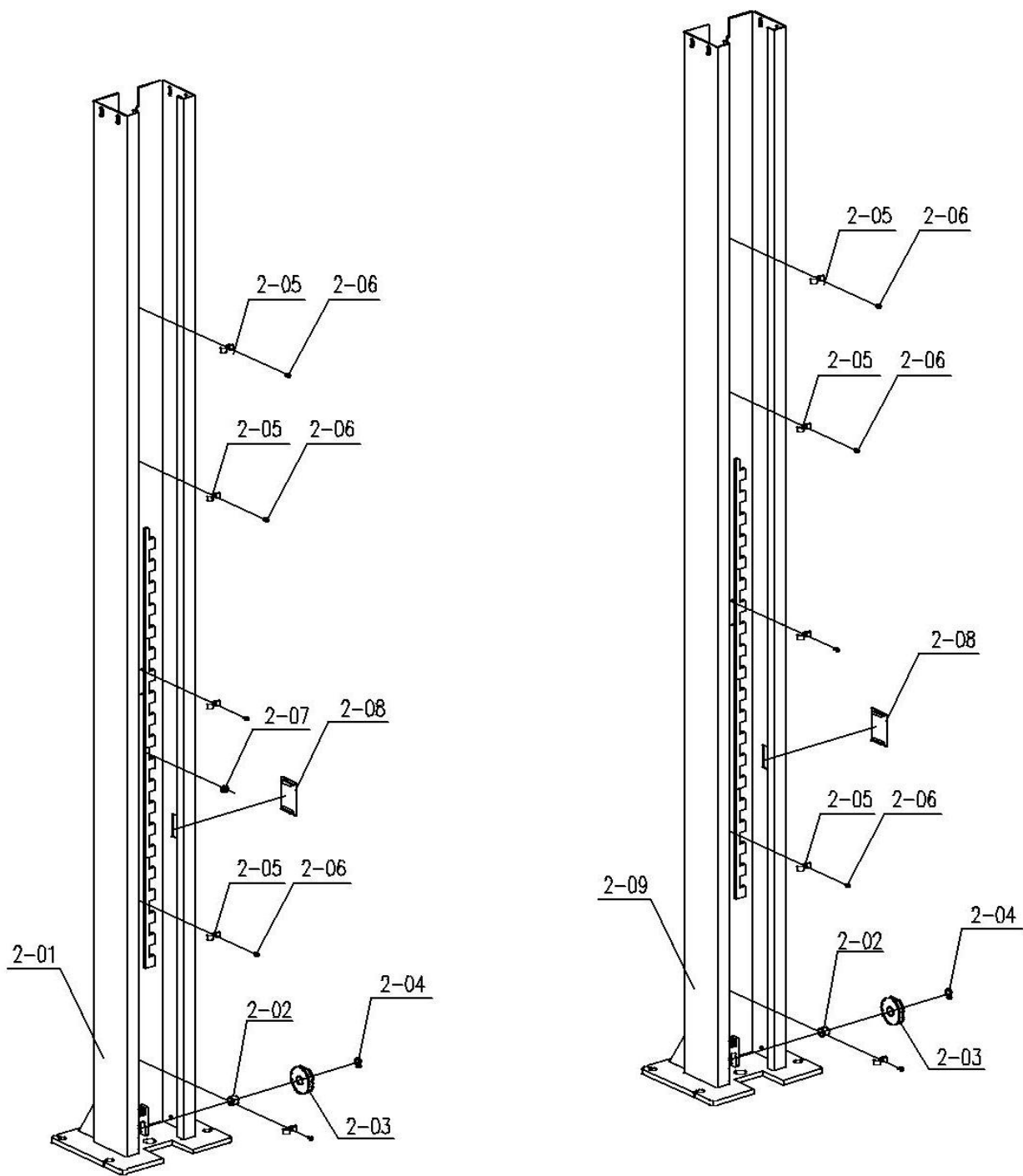


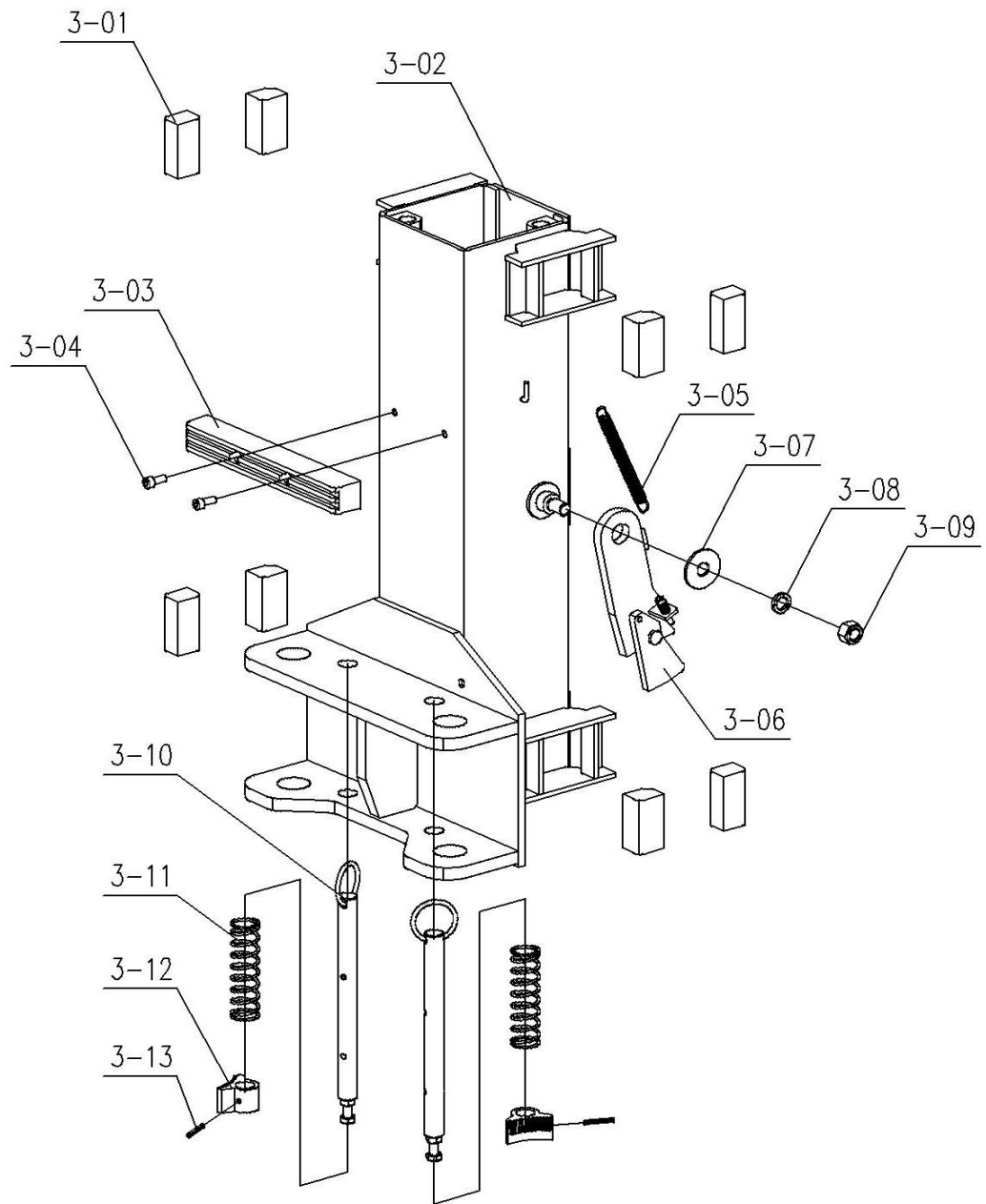
Подъемник электрогидравлический, двухстоечный, с верхней синхронизацией **NORDBERG N4121H-4T**



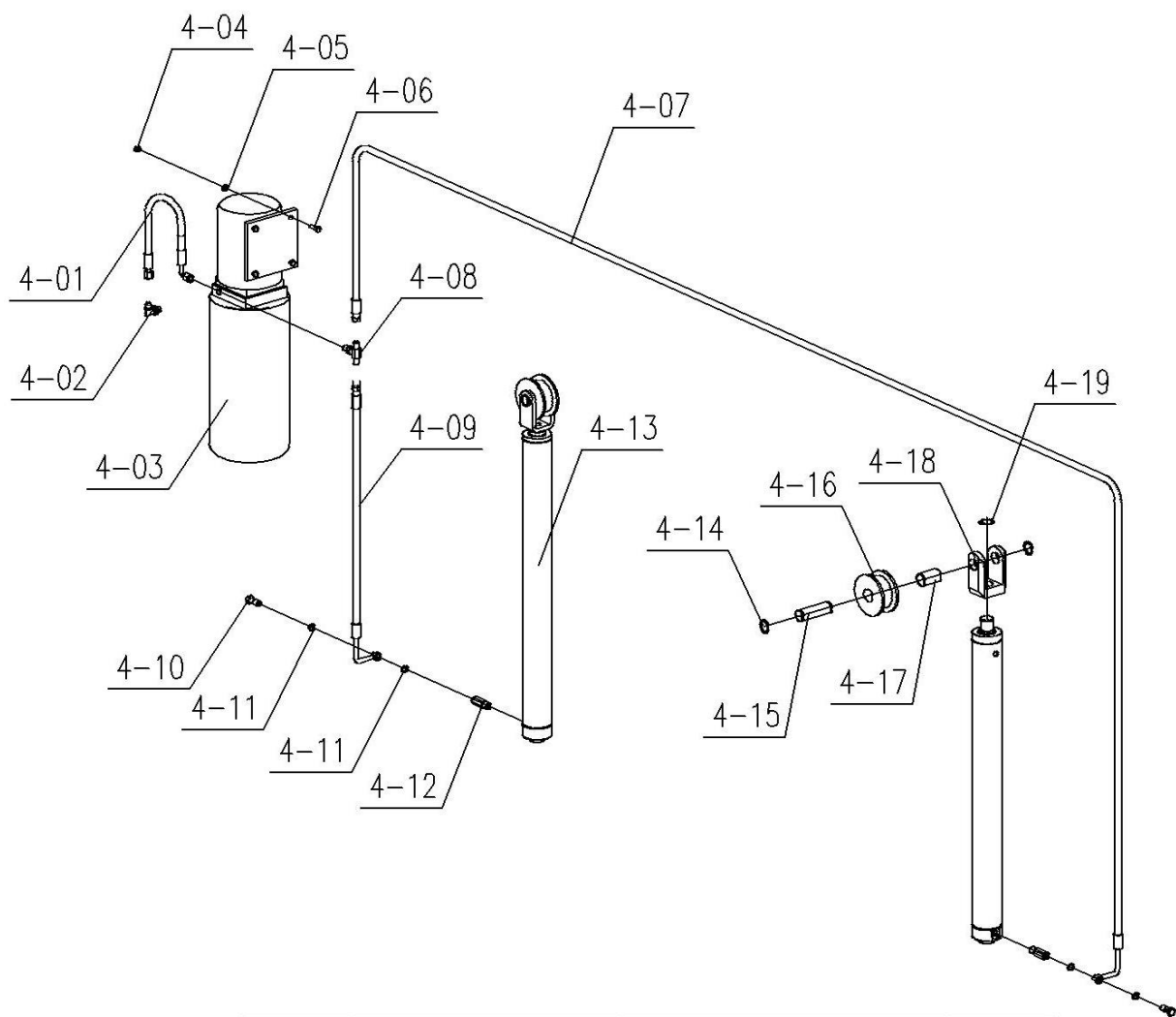
Index #	Item No.	Item name	Quantity	Index #	Item No.	Item name	Quantity
1-01	QJY240DA-N.3	CROSSBEAM ASSEMBLY	1	1-15	GB894.1	CIRCLIP 38	4
1-02	GB5783	HEX HEAD BOLT M12X25	12	1-16	GB6074	CHAIN LH1244-113	2
1-03	QJY230C.1-03	CABLE WHEEL	4	1-17	GB 91	COTTER PIN 2X20	8
1-04	SF-2	BEARING 2520	4	1-18	QJY230C-05	LONG CHAIN PIN	2
1-05	GB894.1	CIRCLIP 25	4	1-19	QJY230C-04	SHORT CHAIN PIN	2
1-06	QJY230DY.4.1	TOP PLATE WELDMENT	2	1-20	QJY230C-07	anchor bolt 3/4"x5.5"	10
1-07	GB 93	SPRING WASHER 12	8	1-21	QJY230C-09	SHIM	8
1-08	GB 97.1	FLAT WASHER 12	8	1-22	GB6170	HEX HEAD NUT M16	8
1-09	QJY240DA-SR.2	NON-POWER POST ASSEMBLY	1	1-23	QJY240DA-N-01	CABLE	2
1-10	QJY240DA-SR.1	POWER POST ASSEMBLY	1	1-24	QJY230B.7b	EXTENSION ADAPTER	4
1-11	QJY240DA-SR.5	CARRIAGE ASSEMBLY	2	1-25	QJY245DS-16a	ADAPTER BRACKET	2
1-12	QJY240CA.4	SHORT ARM ASSEMBLY	2	1-26	GB70.1	SOCKET HEAD CAP SCREW M8X10	4
1-13	QJY240CA.5	LONG ARM ASSEMBLY	2	1-27	QJY240DA-N.8	HYDRAULIC ASSEMBLY	1
1-14	QJY240CA-01	ARM PIN	4				



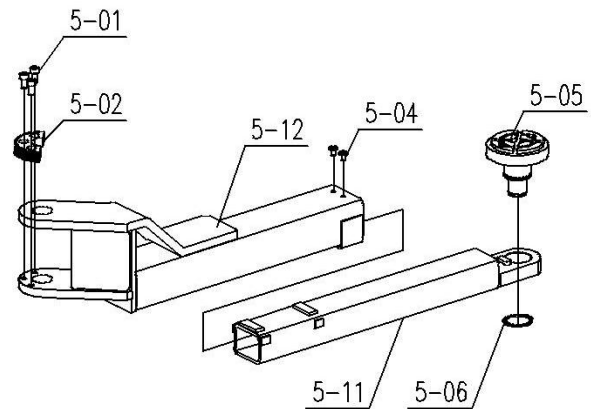
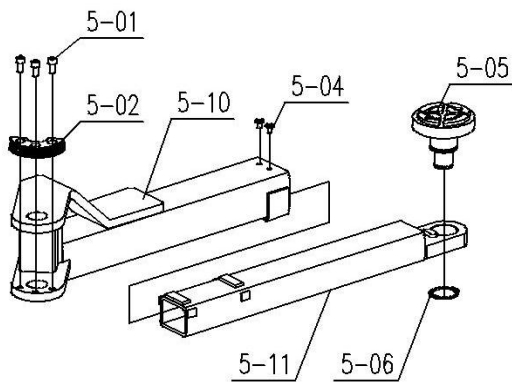
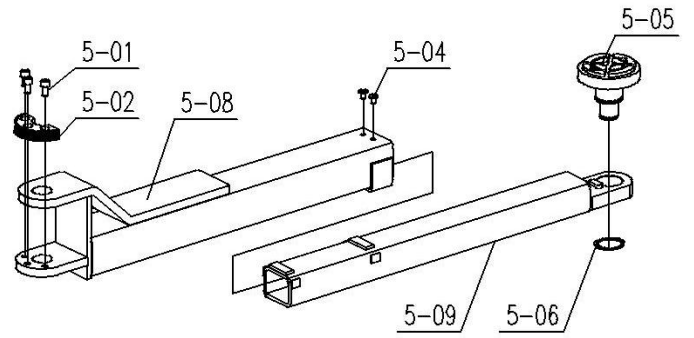
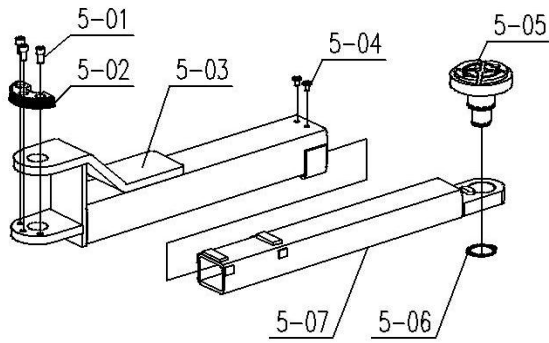
Index #	Item No.	Item name	Quantity
2-01	QJY240DA-SR.1.1	POWER POST WELDMENT	1
2-02	SF-2	BEARING 2520	2
2-03	QJY230C.1-03	CABLE WHEEL	2
2-04	GB894.1	CIRCLIP 25	2
2-05	QJY230D-02	FIXATE CLIP	10
2-06	GB70.1	SOCKET HEAD CAP SCREW M6x10	10
2-07	QJY230DY-N.1-03	WIRE PROTECT	1
2-08	QJY235CQ.1-02	COVER	2
2-09	QJY240DA-SR.2.1	NON-POWER POST WELDMENT	1



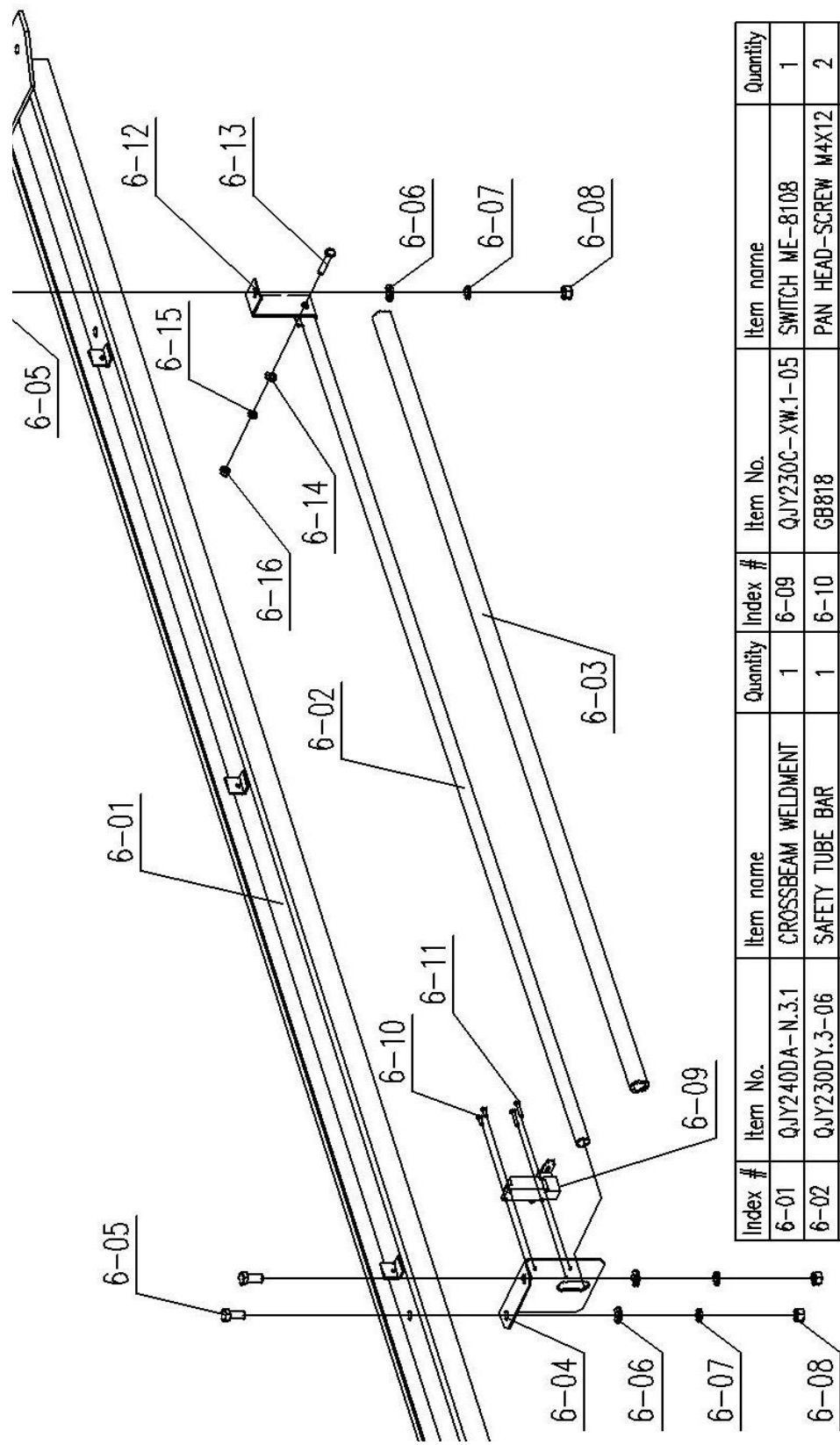
Index #	Item No.	Item name	Quantity
3-01	QJY230C.2-03	SLIDER	16
3-02	QJY240CA.3.1	CARRIAGE WELDMENT	2
3-03	QJY230CY.2-01a	RUBBER PAD	2
3-04	GB70.1	SOCKET HEAD CAP SCREW M8X20	4
3-05	QJY240CA.3-02	SAFETY SPRING	2
3-06	QJY240CA.3.2	SAFETY ASSEMBLY	2
3-07	GB96	FLAT WASHER 16	2
3-08	GB93	SPRING WASHER 16	2
3-09	GB6170	HEX HEAD NUT M16	2
3-10	QJY240DA-SR.5.3	CARRIAGE RESTRAINT PIN	4
3-11	QJY240CA.3-03	SPRING	4
3-12	QJY230C.2-02	TEETH BLOCK	4
3-13	GB879.1	EALSTIC PIN 5x35	4



Index #	Item No.	Item name	Quantity
4-01	QJY245DS.8-03	PUMP HOSE	1
4-02	QJY4040.5-01	PUMP FITTING	1
4-03		PUMP	1
4-04	GB889.1	HEX HEAD LOCK NUT M8	4
4-05	GB97.1	FLAT WASHER 8	4
4-06	GB5783	HEX HEAD BOLT M8X22	4
4-07	QJY240DA-N.8-01	NON-POWER POST HOSE	1
4-08	QJY230D.6a-05a	T FITTING	1
4-09	QJY230DY-N.6-02	POWER POST HOSE	1
4-10	QJY240BN-E.8-02	HOSE CONNECTOR	2
4-11	JB982-77	COMPOSITE WASHER 14	4
4-12	QJY240BN-E.8-03	CYLINDER FITTING	2
4-13	QJY230C.8-04	CYLINDER	2
4-14	GB894.1	CIRCLIP 30	4
4-15	QJY230C.8-10	CHAIN WHEEL PIN	2
4-16	QJY230C.8-09	CHAIN WHEEL	2
4-17	SF-2	BEARING 3052	2
4-18	QJY230C.8-01	CHAIN WHEEL BRACKET	2
4-19	GB894.1	CIRCLIP 32	2



Index #	Item No.	Item name	Quantity
5-01	GB70.1	SOCKET HEAD CAP SCREW M10X20	12
5-02	QJY230C.4-04	ARM TEETH	4
5-03	QJY240CA.4.2	SHORT BACK ARM WELDMENT	2
5-04	QJY240CA.4-01	SCREW M8X12	8
5-05	QJY240CA.4.3	LIFTING PAD ASSEMBLLY	4
5-06	GB894.1	CIRCLIP 50	4
5-07	QJY240CA.4.1	SHORT FRONT ARM WELDMENT	2
5-08	QJY240CA.5.2	LONG BACK ARM WELDMENT	2
5-09	QJY240CA.5.1	LONG FRONT ARM WELDMENT	2
5-10	QJY240CA-NR.5.2	BACK ARM WELDMENT BEND-L	1
5-11	QJY240CA-NR.4.1	FRONT ARM WELDMENT BEND	2
5-12	QJY240CA-NR.4.2	BACK ARM WELDMENT BEND-R	1



Index #	Item No.	Item name	Quantity	Index #	Item No.	Item name	Quantity
6-01	QJY240DA-N.3.1	CROSSBEAM WELDMENT	1	6-09	QJY230C-XW.1-05	SWITCH ME-8108	1
6-02	QJY230DY.3-06	SAFETY TUBE BAR	1	6-10	GB818	PAN HEAD-SCREW M4X12	2
6-03	QJY245DX.9-03	SOFT FOAM TUBE	1	6-11	GB818	PAN HEAD-SCREW M4X25	2
6-04	QJY230DY.3-04	BRACKET OF SWITCH	1	6-12	QJY230DY.3-05	BRACKET OF SAFETY TUBE BAR	1
6-05	GB5783	HEX HEAD BOLT M12X25	3	6-13	GB5783	HEX HEAD BOLT M8X45	1
6-06	GB97.1	FLAT WASHER 12	3	6-14	GB97.1	FLAT WASHER 8	1