

# S40PRO

## MANUALE PER IL PERSONALE TECNICO TECHNICAL MANUAL

### Comprende:

- Esploso con elenco ricambi
- Schema elettrico
- Schema pneumatico

### *Includes:*

- *Exploded view with spare parts list*
- *Wire diagram*
- *Pneumatic diagram*



**SICE**  
AUTOMOTIVE EQUIPMENT

Ed 02/2011

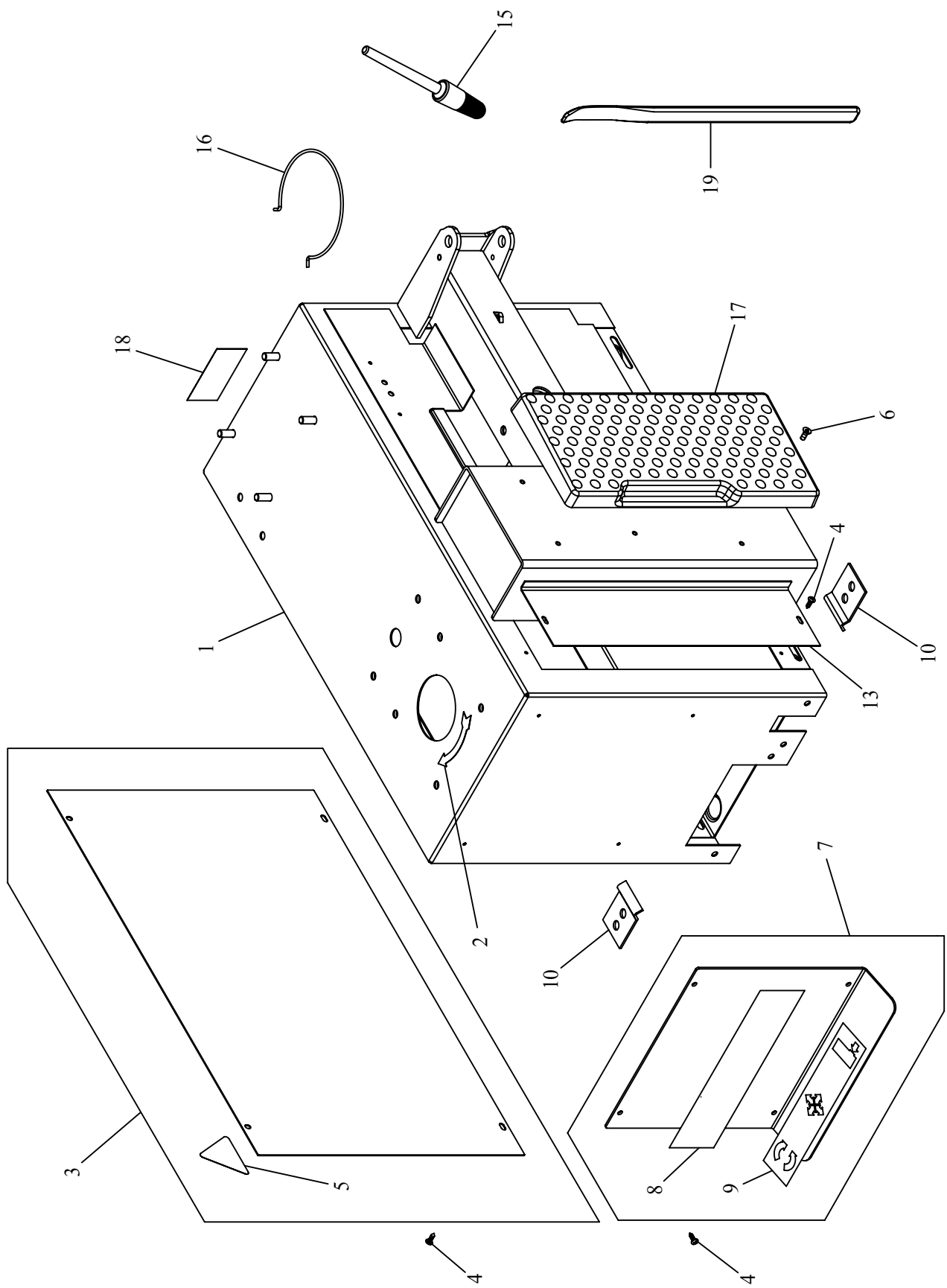
## PARTI DI RICAMBIO

Per ordinazioni specificare **sempre** il **numero di matricola** rilevabile sull'apposita targhetta posta sul dispositivo. Indicare **sempre** il numero di **riferimento** e il numero di **codice** del particolare.

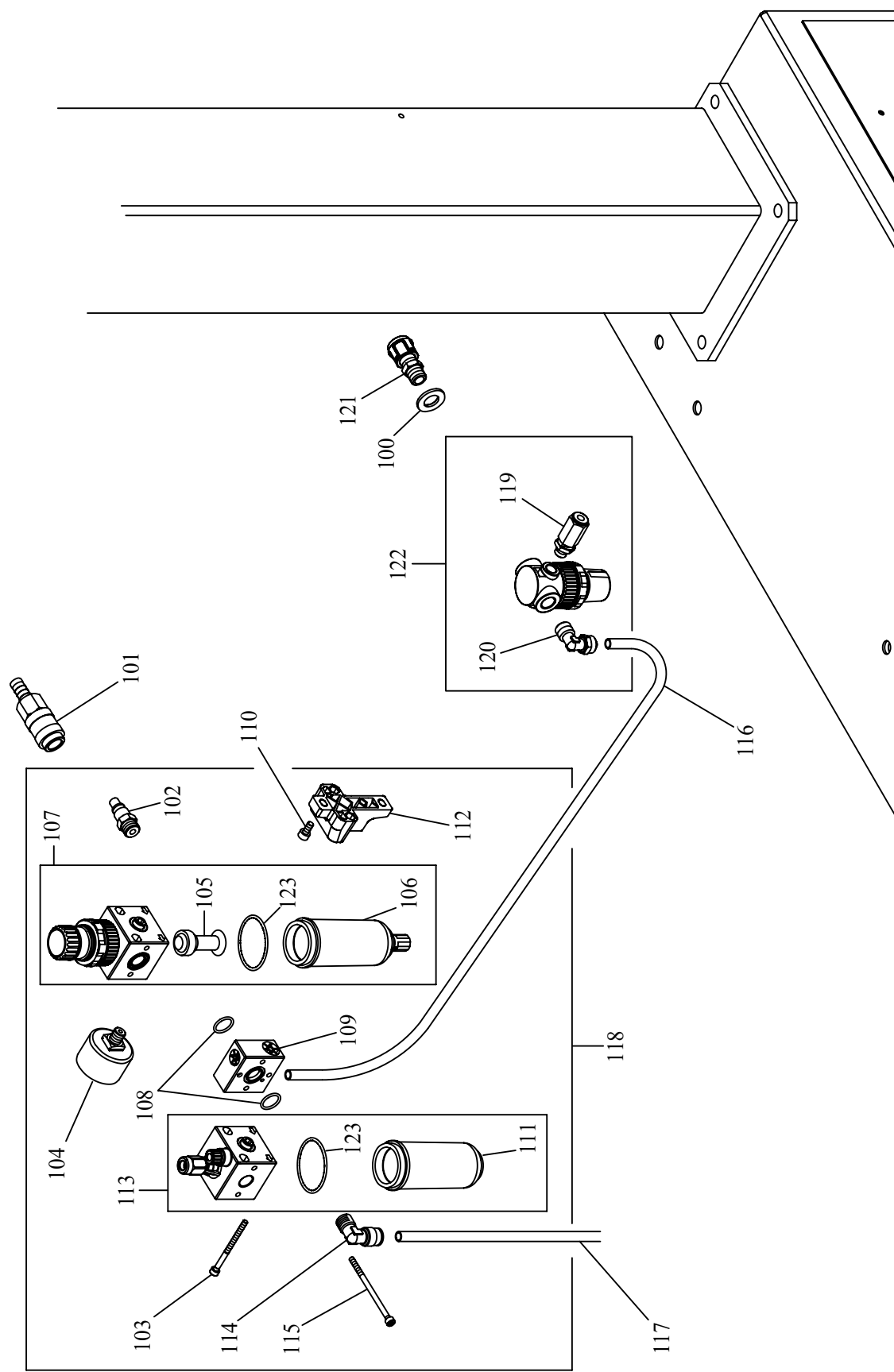
## SPARE PARTS

When ordering **always** specify the **serial number** shown on the data label placed on the device. Please also **always** specify the **reference** and the **code** number of the spares you require.

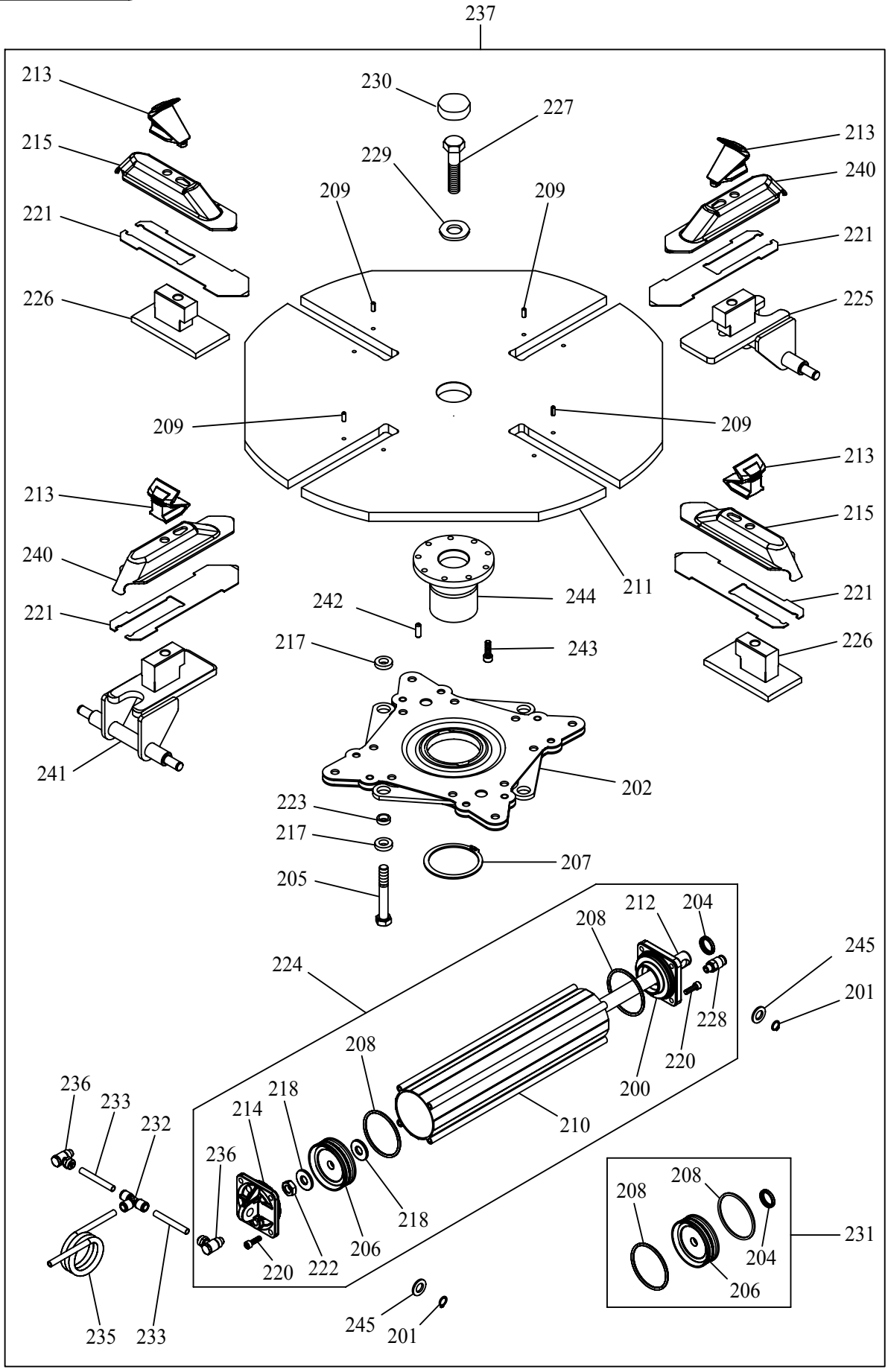
# S40PRO



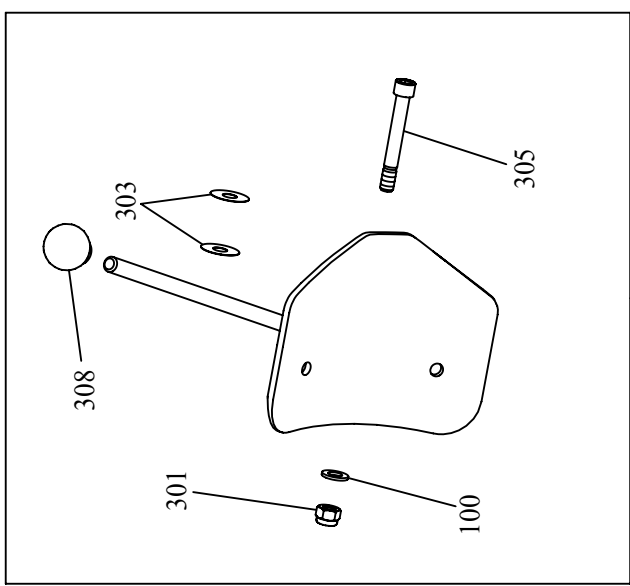
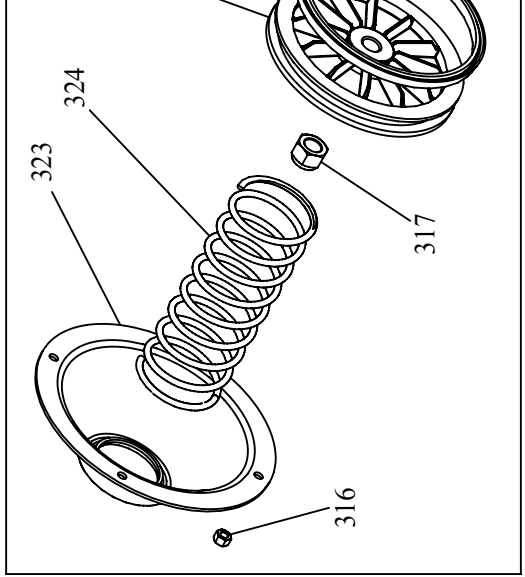
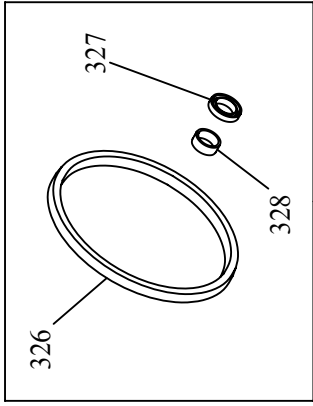
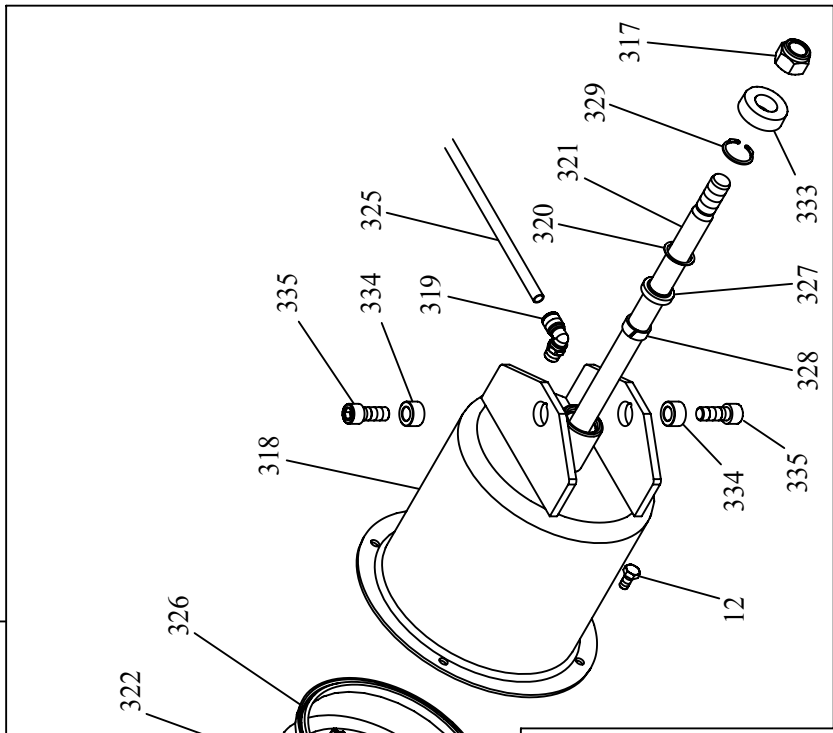
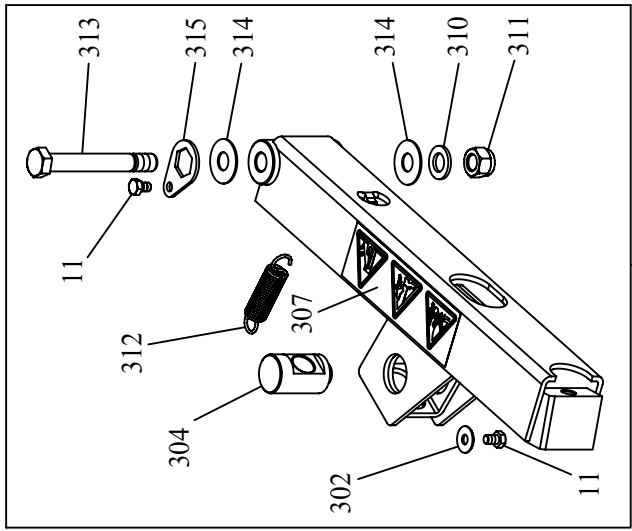
# S40PRO



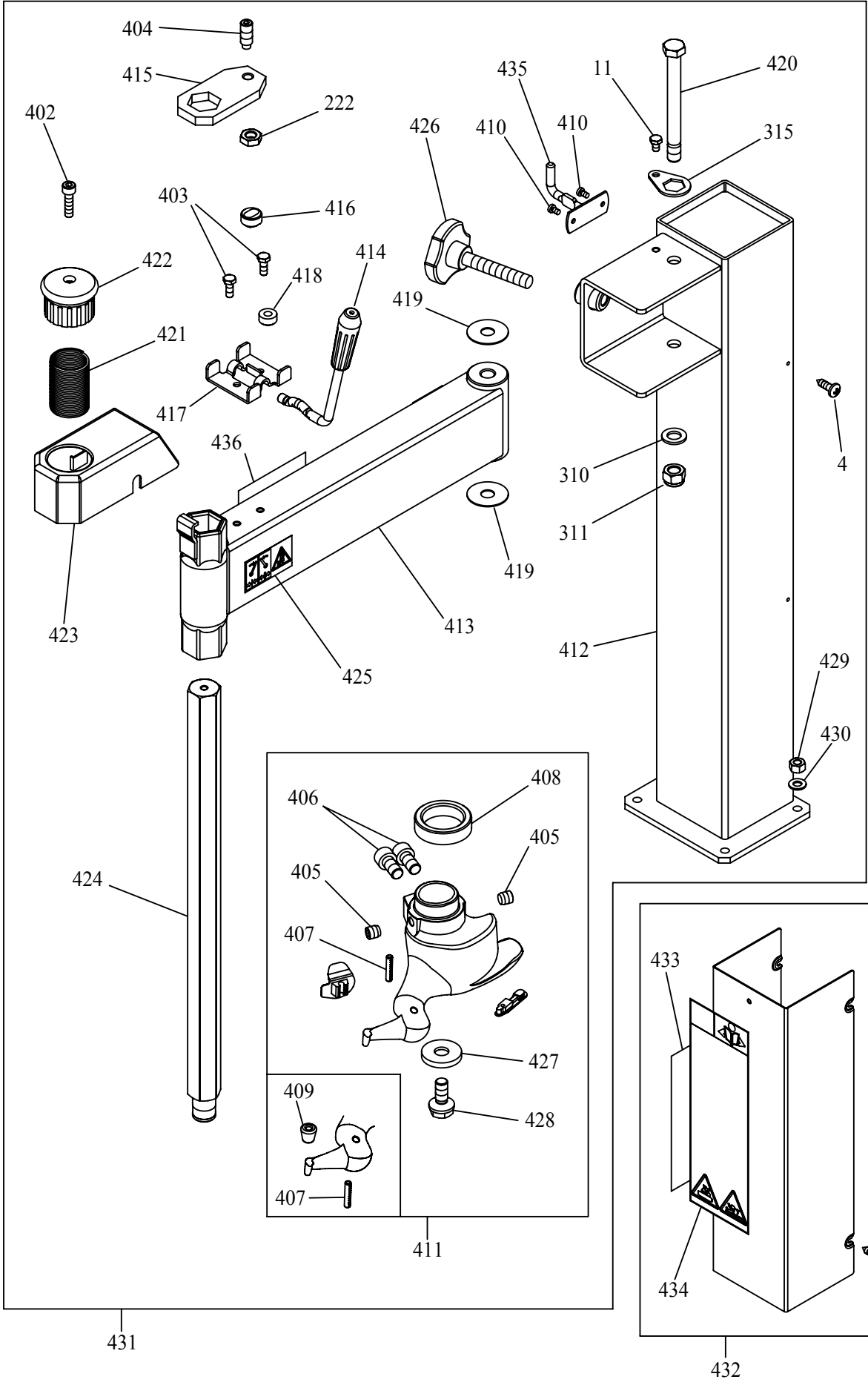
# S40PRO



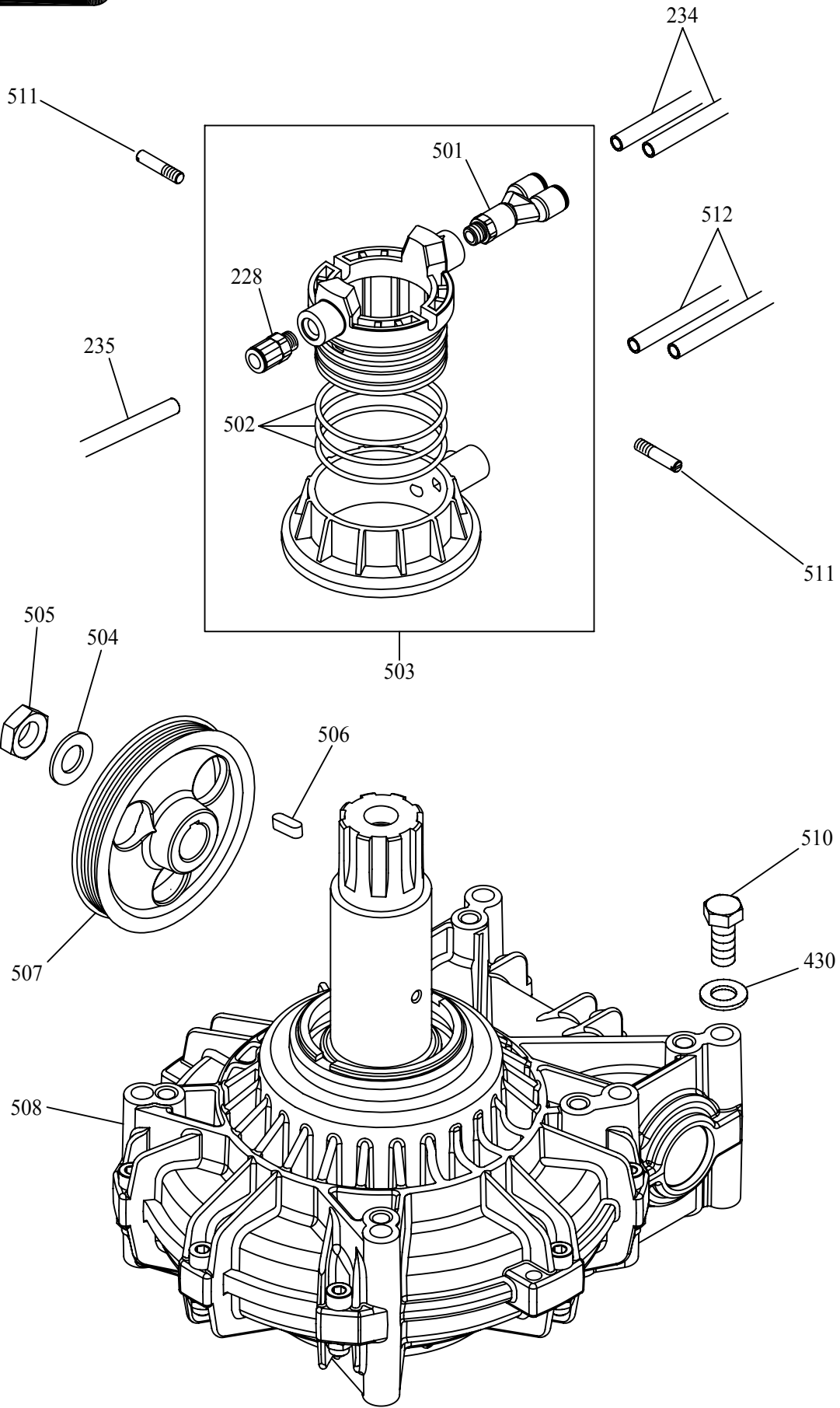
# S40PRO



# S40PRO

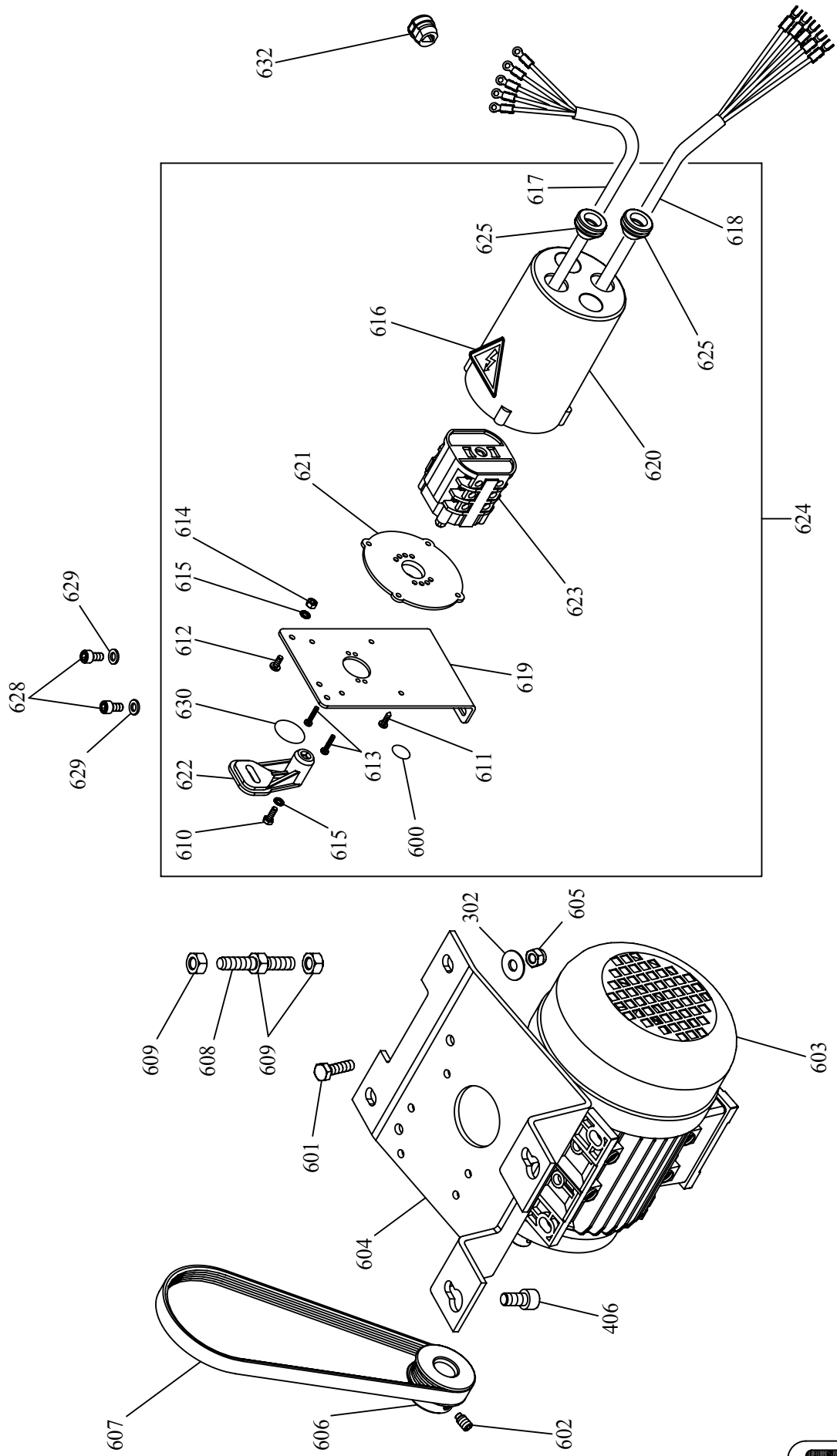


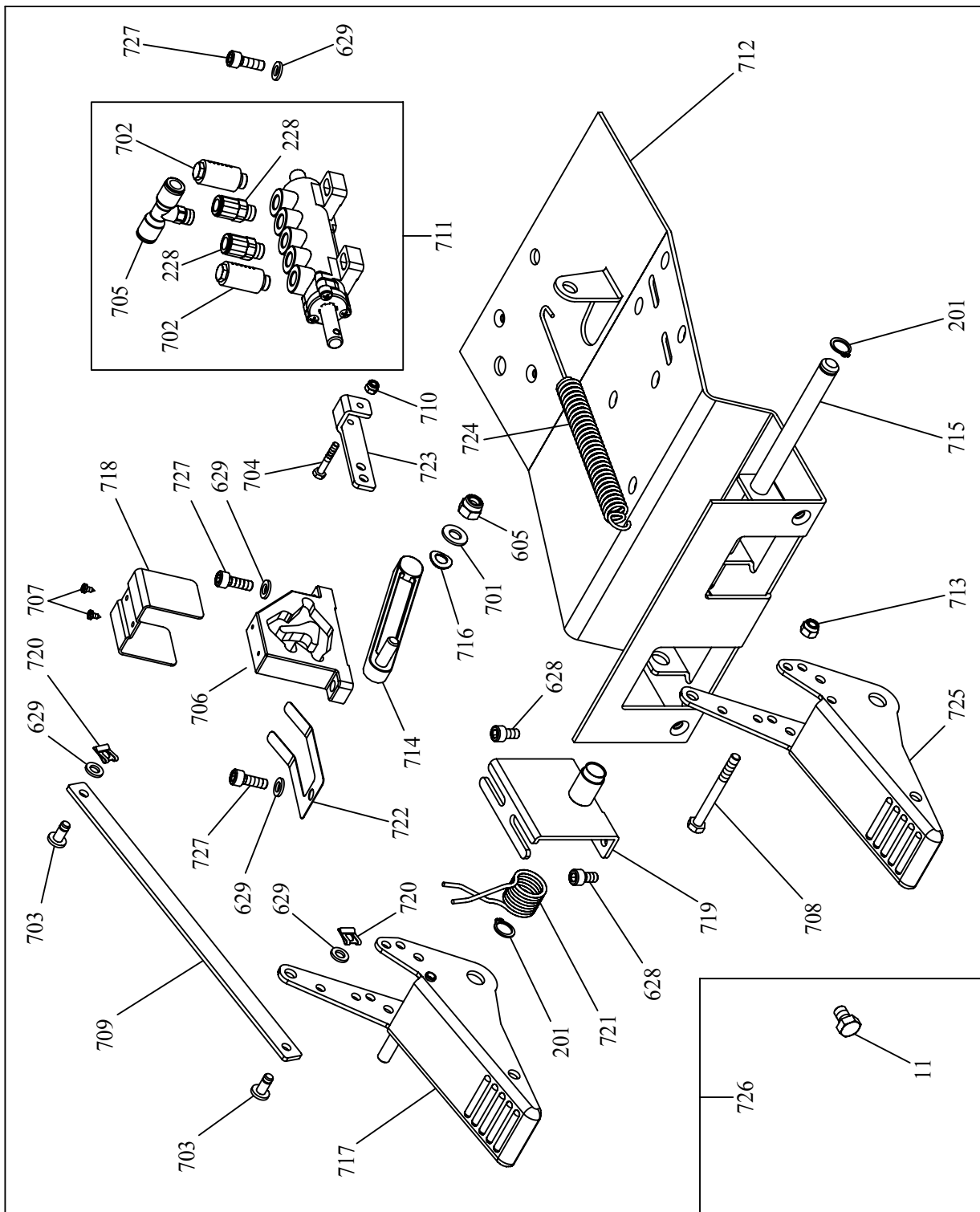
# S40PRO



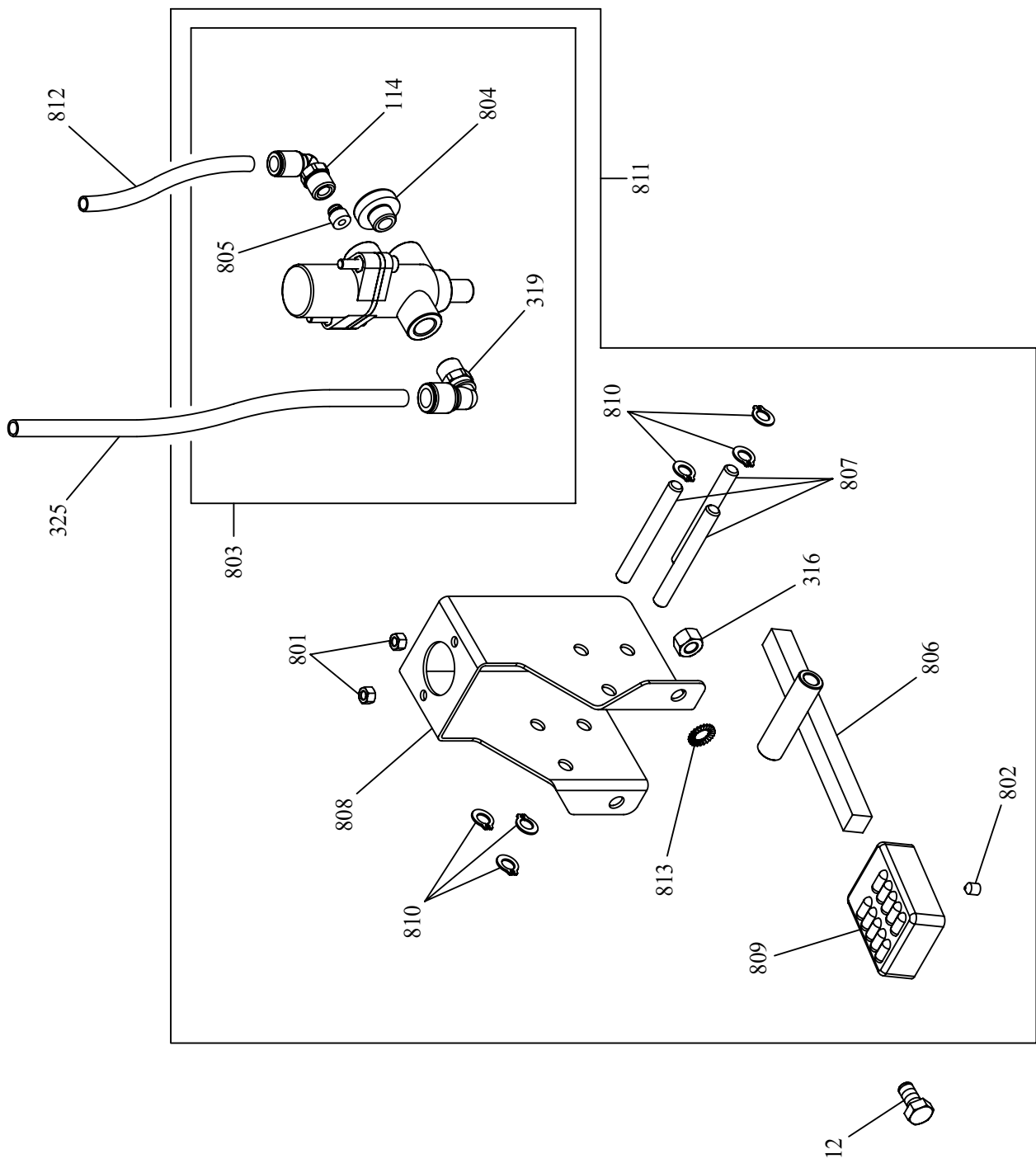


# S40PRO



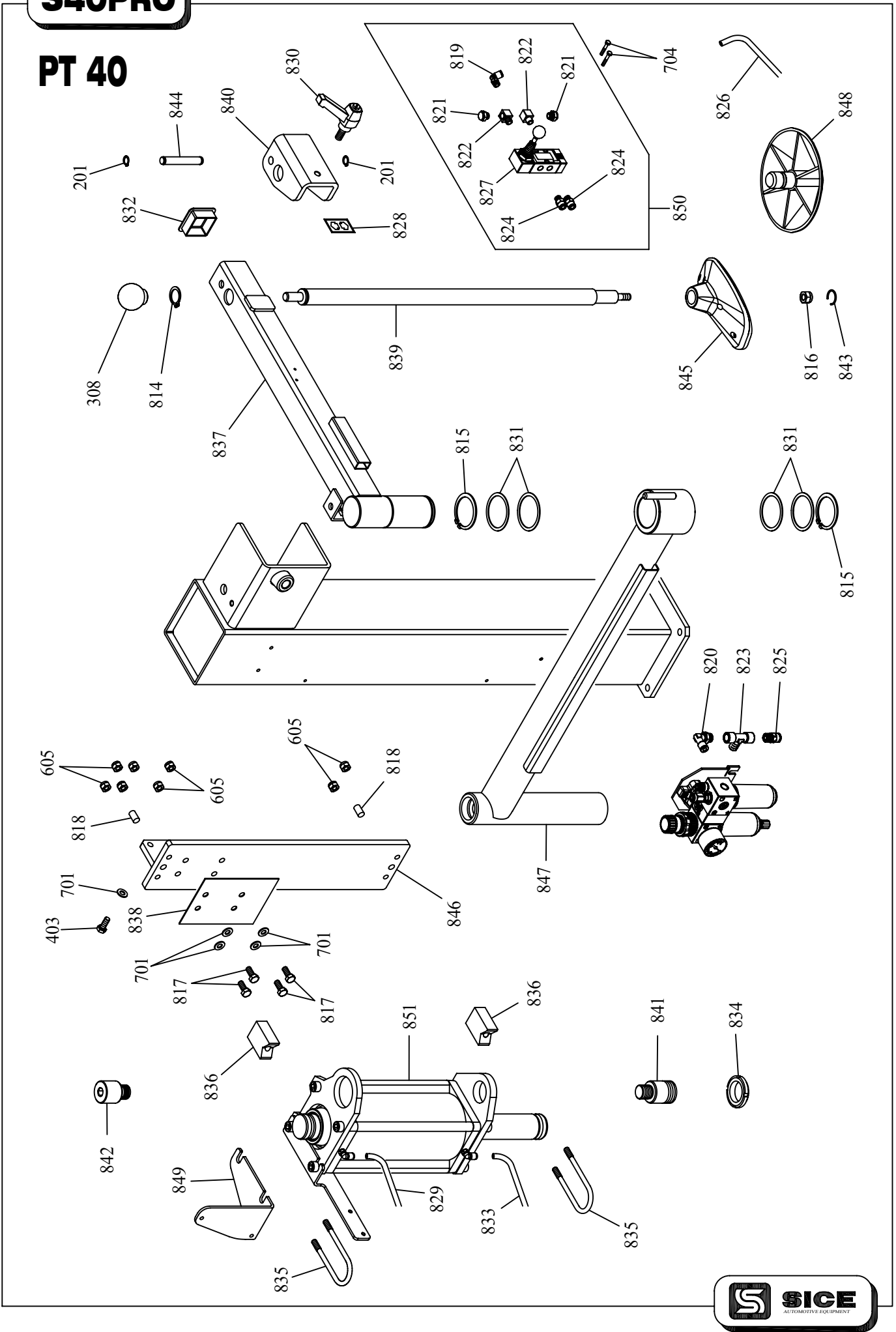


# S40PRO



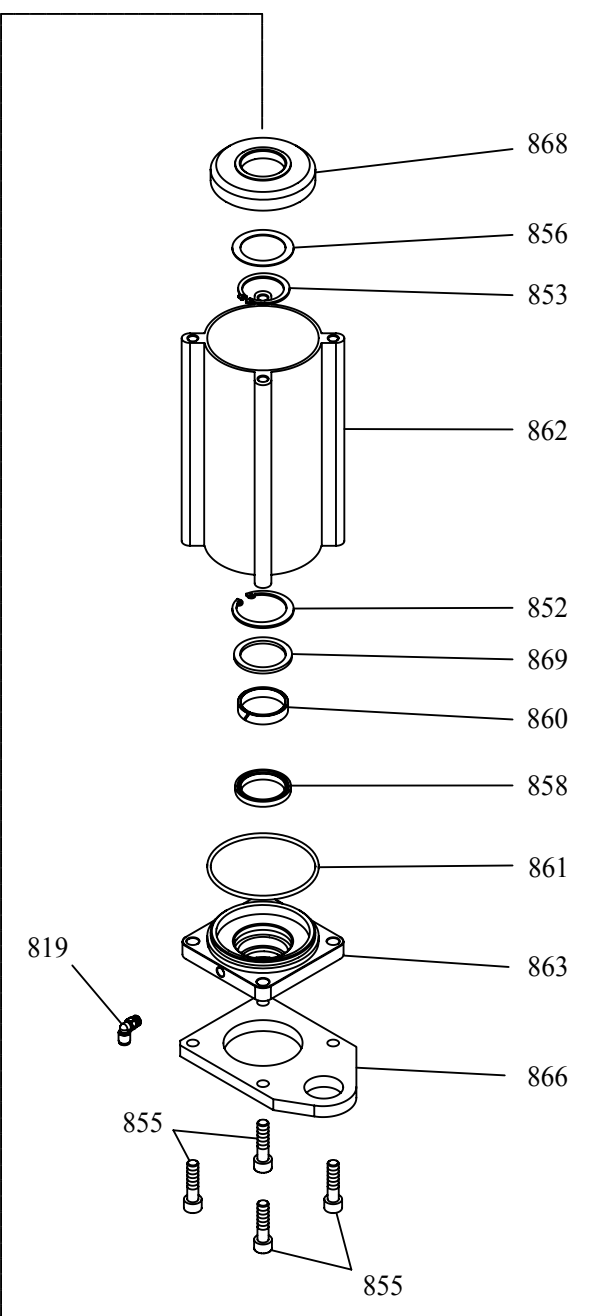
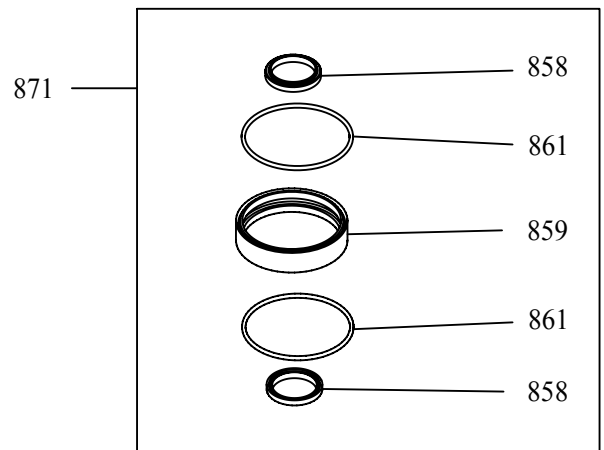
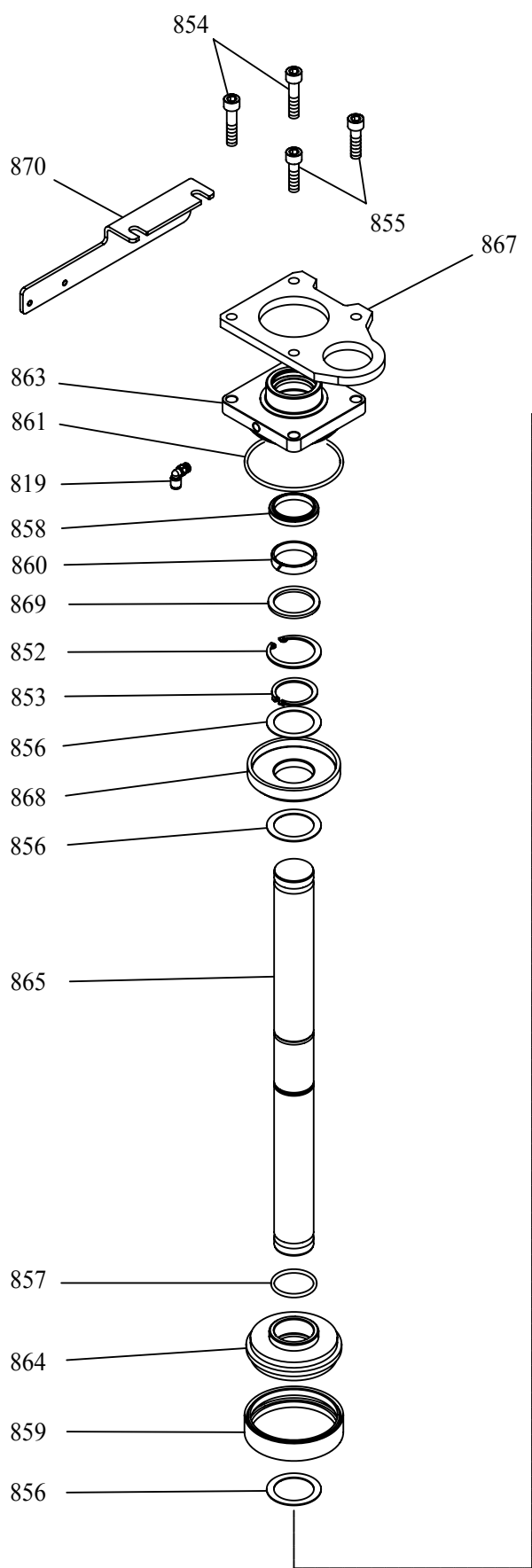
# S40PRO

## PT 40

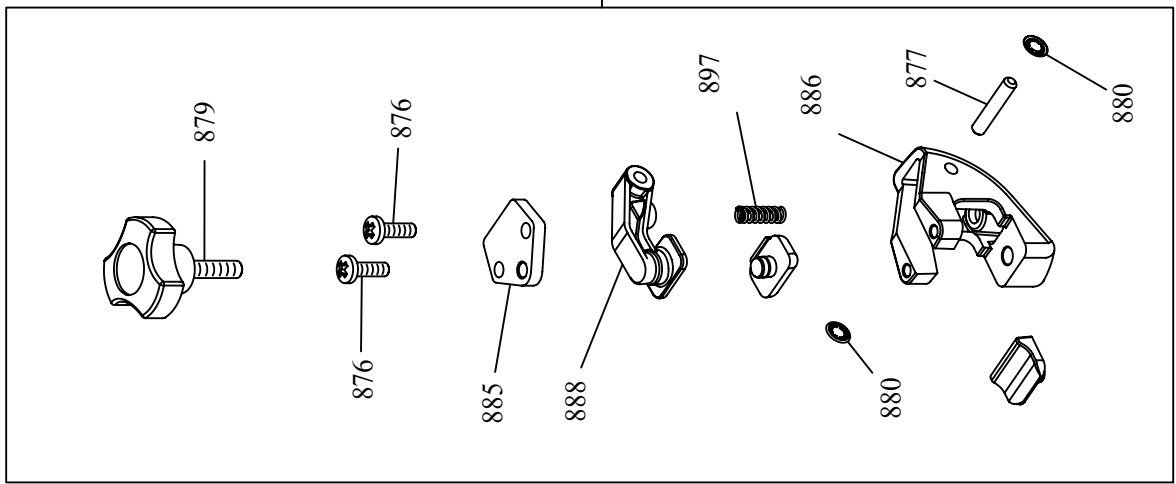
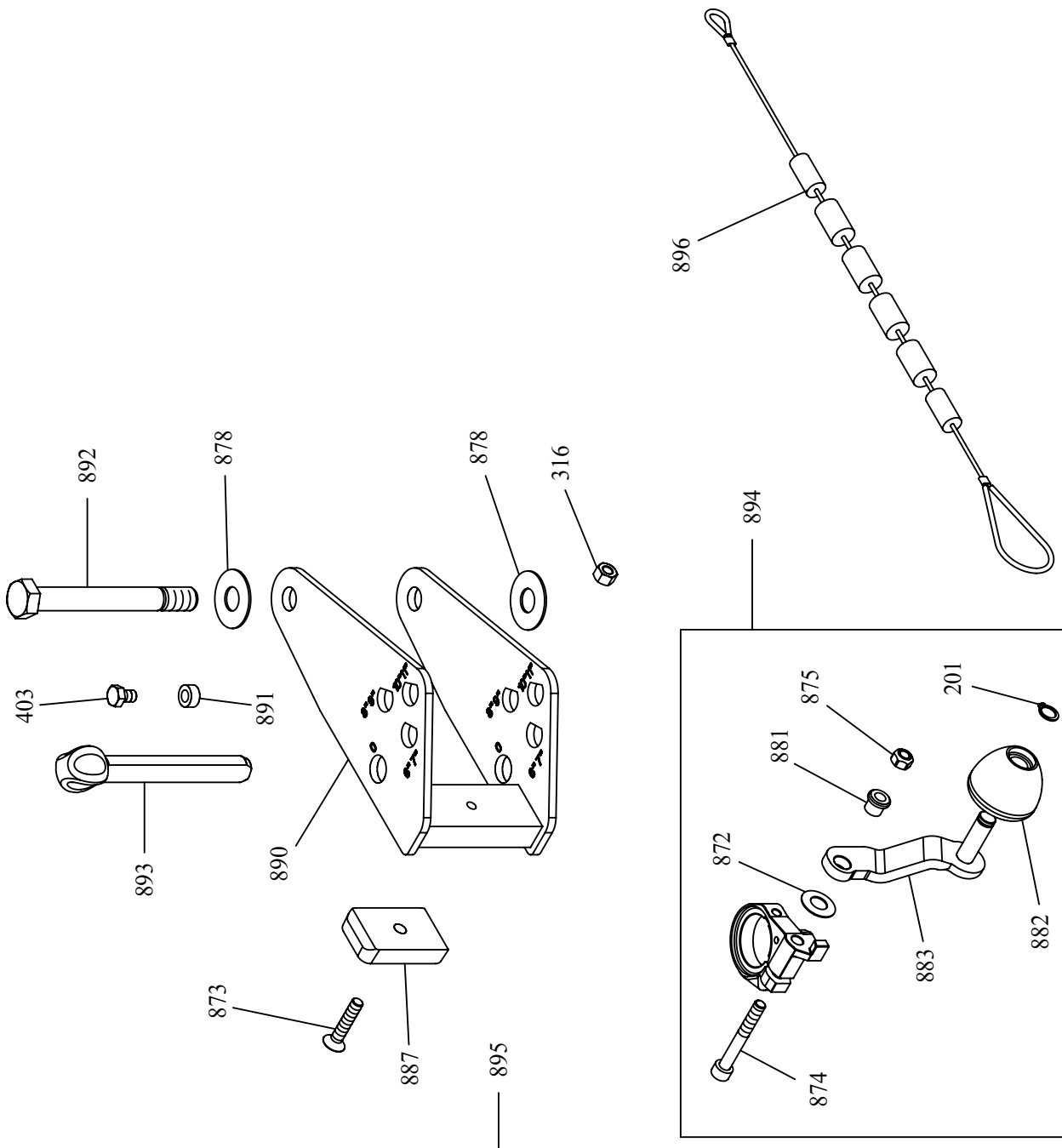


# S40PRO

## PT 40



# S40PRO



<b>Rif. Ref.</b>	<b>Codice Code</b>	<b>Descrizione</b>	<b>Description</b>
1	4-402860	CARCASSA	<i>BODY</i>
2	3020842	TARGA SENSO ROTAZIONE	<i>SENSE OF ROTATION ARROW</i>
3A	5-104044	RICAMBIO FIANCATA (GIALLO)	<i>LEFT SIDE PANEL (YELLOW)</i>
3B	5-104047	RICAMBIO FIANCATA (BLU)	<i>LEFT SIDE PANEL (BLUE)</i>
3C	5-104045	RICAMBIO FIANCATA (ROSSO)	<i>LEFT SIDE PANEL (RED)</i>
4	2-02411	VITE AUTOFILETTANTE D.4,8X16	<i>SELF-TAPPING SCREW D.4,8X16</i>
5	3014056	TARGA PERICOLO TENSIONE	<i>WARNING TENSION LABEL</i>
6	2-80134	VITE TSPEI M 6X16	<i>SOCKET COUNTERSUNK SCREW M6X16</i>
7A	5-104055	RICAMBIO PROT. PEDALI (GIALLO)	<i>PEDAL COVER (YELLOW)</i>
7B	5-104057	RICAMBIO PROT. PEDALI (BLU)	<i>PEDAL COVER (BLUE)</i>
7C	5-104056	RICAMBIO PROT. PEDALI (ROSSO)	<i>PEDAL COVER (RED)</i>
8A	4-112580	TARGA S 40 PRO (BIANCA)	<i>S40 PRO LABEL (WHITE)</i>
8B	4-407366	TARGA S 40 PRO (NERA)	<i>S40 PRO LABEL (BLACK)</i>
9A	3006515	TARGA PEDALI (NERA)	<i>PEDAL DATA PLATE (BLACK)</i>
9B	4-112575	TARGA PEDALI (BIANCA)	<i>PEDAL DATA PLATE (WHITE)</i>
10	3015620	PIEDE FISSAGGIO MACCHINA	<i>FIXING PLATE</i>
11	2-91715	VITE TE M8X12	<i>HEXAGON HEAD CAP SCREW M8X12</i>
12	2-02341	VITE TE M8X16	<i>HEXAGON HEAD CAP SCREW M8X16</i>
13A	3016836	FIANCATA DESTRA (GIALLO)	<i>RIGHT SIDE PANEL (YELLOW COLOR)</i>
13B	4-402480	FIANCATA DESTRA (BLU)	<i>RIGHT SIDE PANEL (BLUE COLOR)</i>
13C	4-401011	FIANCATA DESTRA (ROSSO)	<i>RIGHT SIDE PANEL (RED COLOR)</i>
15	4294838	PENNELLO GRASSO	<i>TYRE PASTE APPLICATOR</i>
16	3094868	SOSTEGNO VASO GRASSO	<i>HOLDER FOR TYRE PASTE CONTAINER</i>
17	4-401740	APPOGGIO RUOTA	<i>WHEEL SUPPORT</i>
18	3014102	TARGA COLLEGAMENTO GONFIATORE	<i>LABEL</i>
19	4-405308	LEVA ALZA TALLONI UHP	<i>UHP TYRE LEVER</i>
100	2-00214	RONDELLA D.12	<i>WASHER FOR HEX CAP SCREW M12</i>
101	3-00411	RUBINETTO RAPIDO D.10,5	<i>BALL VALVE (D.10,5)</i>
102	3-00410	INNESTO RAPIDO MASCHIO	<i>QUICK MALE UNION</i>
103	2-02036	VITE TCEI M4X55	<i>SOCKET HEAD CAP SCREW M4X55</i>
104	3-00488	MANOMETRO 1/8" 0-12 BAR	<i>MANOMETER G1/8 0-12BAR</i>
105	4220008	FILTRO	<i>FILTER</i>
106	4220006	TAZZA FILTRO	<i>FILTER TANK</i>
107	4220003	FILTRO COMPLETO	<i>COMPLETE FILTER UNIT</i>
108	4216117	GUARNIZIONE OR2056(1,78X14)	<i>O-RING 2056 (1,78X14)</i>
109	4220002	BLOCCHETTO DI COLLEGAMENTO	<i>CONNECTING BLOCK</i>
110	2-03546	VITE TCEI M5X10	<i>SOCKET HEAD CAP SCREW M5X10</i>
111	4220007	TAZZA LUBRIFICATORE	<i>LUBRICATOR TANK</i>
112	4220005	ATTACCO FILTRO/LUBRIFICATORE	<i>FILTER AND LUBRICATOR HOLDER</i>
113	4220004	LUBRIFICATORE COMPLETO	<i>COMPLETE LUBRICATOR UNIT</i>
114	3-00060	RACCORDO A L GIREVOLE 1/4 T8	<i>ORIENTING ELBOW FITTING 1/4 T8</i>
115	2-94027	VITE TCEI M4X70	<i>SOCKET HEAD CAP SCREW M4X70</i>
116	3014052	TUBO RILSAN NERO 8-6 L. 300	<i>RILSAN HOSE D.8-6 L.300</i>
117	3005167	TUBO RILSAN NERO 8-6 L.1100	<i>RILSAN HOSE D.8-6 L.1100</i>
118	2020110	FILTRO/REGOLAT.+LUBRIF.BAR/PSI	<i>PRESSURE REGULATOR+LUBRICATOR</i>

Rif. Ref.	Codice Code	Descrizione	Description
119	3-00362	VALVOLA DI SICUREZZA G1/8	SAFETY VALVE G1/8"
120	3-00108	RACCORDO A L 1/4 T8/6	ELBOW MALE ADAPTOR G1/4 T.8-6
121	3-00202	RACCORDO CON DADO FRESATO	BAYONET CONNECTION
122	2014053	REGOLATORE PRESSIONE	PRESSURE REGULATOR
123	4212295	GUARNIZIONE OR2125(1,78X31,47)	O-RING 2125 (1,78X31,47)
200	3020641	FLANGIA ANTERIORE	CYLINDER FRONT FLANGE D.70
201	2-00025	ANELLO ELASTICO D.12	RETAINING RING FOR SHAFT D.12
202	5-400984	FLANGIA COMANDO 10"-20,5"	CONTROL PLATE
204	4220637	GUARNIZIONE RASC.BID.20X26X3,6	LIPPED GASKET 20X26X3,6
205	2-94079	VITE TE M12X85	HEXAGON HEAD CAP SCREW M12X85
206	4217860	GUARNIZIONE PISTONE D.70	GASKET WITH FLANGE D.70
207	2-02519	ANELLO ELASTICO D.72	RETAINING RING FOR SHAFT D.72
208	4209740	GUARNIZIONE OR4250(3,53X63,09)	O-RING 4250
209	2-71921	SPINA ELASTICA D.5X14	SPRING-TYPE STRAIGHT PIN D5X14
210	4-403639	CAMICIA D.70	CASING D. 70
211	4-407176	PIASTRA AUTOCENTRANTE 20"	TURNTABLE 20"
212	4-403638	STELO D.20	SHAFT D. 20
213	3008225	GRIFFA BLOCCAGGIO	CLAMPING JAW
214	3020642	FLANGIA POSTERIORE	CYLINDER REAR FLANGE D.70
215	3008731	SCORREVOLE	SLIDE
217	3020438	DISTANZIALE D.12,25X24X6	SPACER D 12,25X24X6
218	3010677	RONDELLA D.12,5X30X3	WASHER D. 12,5X30X3
220	2-02057	VITE TCEI M 6X 20	SOCKET HEAD CAP SCREW M6X20
221	3021213	LAMA COPRIASOLA	COVER PLATE
222	2-91640	DADO BASSO M12	LOW NUT M 12
223	4-400454	BOCCOLA BIELLA COMANDO	BUSH FOR CONTROL PLATE
224	5-490596	CILINDRO D.70X20X300 COMPLETO	COMPLETE CYLINDER D. 70X20X300
225	4-407328	SCORREVOLE CON PERNO	SLIDING GUIDE WITH PIN
226	4-407187	SCORREVOLE INFERIORE	SLIDING GUIDE
227	2-03544	VITE TE M16X1,5X40	HEX.HEAD CAP SCREW M16X1,5X40
228	3-00477	RACCORDO DRITTO 1/8" 8-6	STRAIGHT MALE ADAPTOR G1/8 T.8
229	3094668	RONDELLA PIASTRA AUTOCENTRANTE	TURNTABLE WASHER
230	3308152	CAPPUCCIO PIASTRA AUTOCENTRANTE	TURNTABLE CAP
231	2202349	KIT GUARNIZIONI+PISTONE D.70	SET OF GASKET CYLINDER D.70
232	3-00025	RACCORDO A T 8-6 RAPIDO	TEE CONNECTOR T.8
233	4-401998	TUBO RILSAN NERO 8-6 L. 62	RILSAN HOSE D.8-6 L.62
234	4-403902	TUBO RILSAN NERO 8-6 L. 350	RILSAN HOSE 8-6 L.350
235	4-401988	TUBO POLIURETANO A SPIRALE	POLYURETHAN SPIRAL HOSE T8-5
236	2201587	RACCORDO SEMPLICE G1/8 8-6	ELBOW MALE ADAPTOR G1/8 T.8
237	5-490597	AUTOCENTRANTE COMPLETO	COMPLETE SELF-CENTERING CHUCK
240	4-402075	SCORREVOLE CON NICCHIA	SLIDE (RED SPOTTED INDENT)
241	4-407190	SCORREVOLE CON PERNO	SLIDING GUIDE WITH PIN
242	2-03135	SPINA ELASTICA D.8X24	SPRING-TYPE STRAIGHT PIN D8X24
243	2-03559	VITE TCEI M8X20	SOCKET HEAD CAP SCREW M8X20
244	4-407185	MOZZO PIASTRA AUTOCENTRANTE	TURNTABLE HUB



<b>Rif. Ref.</b>	<b>Codice Code</b>	<b>Descrizione</b>	<b>Description</b>
245	2-03354	ROSETTA D.12	WASHER FOR CHEESE SCREW M12
301	2-01021	DADO AUTOBLOCCANTE M12	NUT WITH POLYAMIDE RING M12
302	2-01299	ROSETTA D 9X24X2	WASHER D.9X24X2
303	3007326	RASAMENTO D.13X35X0,3	WASHER 35 X 13 X 0,3
304	3010961	PERNO ORIENTABILE	SWINING PIN
305	3094971	VITE SPECIALE M12	SPECIAL SCREW M12
306	5-400293	BRACCIO STALLONATORE COMPLETO	COMPLETE BEAD BREAKER ARM
307	4-402938	TARGA PERICOLO STALLONATORE	WARNINGS LABEL
308	3305242	IMPUGNATURA A SFERA	PLASTIC BALL KNOB
309	2200140	PALETTA COMPLETA	COMPLETE BLADE
310	2-01045	RONDELLA D.16	WASHER D.16
311	2-01096	DADO AUTOBLOCCANTE M16X1,5	NUT WITH POLYAMID RING M16X1,5
312	3008952	MOLLA STALLONATORE	BEAD BREAKER SPRING
313	3015534	VITE SPECIALE M 16X1,5	SPECIAL SCREW M16X1.5
314	3015976	RASAMENTO D.16,5X40X1,5	WASHER D.16,5X40X1,5
315	3016013	PIASTRINA FERMA VITE	SCREW HOLDER PLATE
316	2-00128	DADO ALTO M 8	HIGH NUT M 8
317	2-01242	DADO AUTOBLOCCANTE M18X1,5	NUT WITH POLYAMID RING M18X1.5
318	2120739A	CILINDRO STALLONATORE	BEAD BREAKER CYLINDER
319	3-00517	RACCORDO A L 1/4" 10-8 ORIENT.	ORIENTING ELBOW FITTING 1/4 10
320	3010912	RASAMENTO D.24X29,5X0,5	WASHER 24X29,5X0,5
321	3010963	STELO D.20	SHAFT FOR CYLINDER D.186
322	3011059	PISTONE D.186	PISTON D.186
323	3094377	COPERCHIO CIL. STALLONATORE	BEAD BREAKER CYLINDER COVER
324	3094378	MOLLA COMPRESSIONE	HELICAL COMPRESSION SPRING
325	4-402774	TUBO RILSAN NERO 10-8 L.1000	PNEUMATIC HOSE D.10-8 L=1000
326	4205257	GUARNIZIONE DE 725	LIPPED GASKET D.186 DE-725
327	4206114	GUARNIZIONE NSW 20-30-6	LIPPED GASKET NSW 20-30-6
328	4206523	GUIDA STELO WRI-20	WEAR RING FOR ROD WRI-20
329	4300414	SEEGER INTERNO D.30	RETAINING RING FOR BORE D.30
330	2200603	SET GUARNIZIONI CIL.STALL.	SET OF GASKET FOR BEAD BREAKER
331	5-400938	CILINDRO STALLONATORE COMPLETO	COMPLETE BEAD BREAKER CYLINDER
333	3310960	AMMORTIZZATORE	SHOCK ABSORBER
334	4-403808	BOCCOLA FULCRO CILINDRO STALL.	BEAD BREAKER BUSH
335	2-80101	VITE TCEI M12X30	SOCKET HEAD CAP SCREW M12X30
402	2-02049	VITE TCEI M8X30	SOCKET HEAD CAP SCREW M8X30
403	2-02047	VITE TE M8X20	HEXAGON HEAD CAP SCREW M8X20
404	2-71370	VITE STEI M12X30	SOCKET SET SCREW M12X30
405	2-01146	VITE STEI M10X10	SOCKET SET SCREW M10X10
406	2-03553	VITE TCEI M10X20	SOCKET HEAD CAP SCREW M10X20
407	4220605	SPINA ELASTICA D.5X25 VSM12785	SPRING TENSION PIN D.5X25
408	3309545	AMMORTIZZATORE TORRETTA	MOUNTING HEAD SHOCK ABSORBER
409	3093674	RULLINO CONICO UNGHIA	CLAW ROLLER
410	2-01288	VITE TCIC M6X10	CROSS PAN HEAD SCREW M6X10
411	2202073	TORRETTA COMPLETA	COMPLETE MOUNTING HEAD

Rif. Ref.	Codice Code	Descrizione	Description
412	4-404926	PALO VERTICALE	VERTICAL POST
413	2120297	BRACCIO BANDIERA	MOUNTING ARM
414	2310947	LEVA CON MANOPOLA	LEVER WITH HANDLE
415	3010501	PIASTRA BLOCCAGGIO VERTICALE	VERTICAL LOCKING PLATE
416	2201117	NOTTOLINO CON INSERTO	PAWL WITH INSERT
417	440281	PIASTRINA ECCENTRICO A LEVA	PLATE FOR CAM LEVER
418	3010908	DISTANZIALE D.8X18X9	SPACER
419	3015495	RASAMENTO D.16,5X50X1,5	WASHER D.16,5X50X1,5
420	3015531	VITE SPECIALE M 16X1,5	SPECIAL SCREW M16X1.5
421	3016555	MOLLA COMPRESSIONE	HELICAL COMPRESSION SPRING
422	3305161	POMOLO	KNOB
423	440285	CARTER PROTEZIONE BLOCCAGGIO	VERTICAL LOCKING COVER
424	4-400311	ASTA ESAGONALE	HEXAGONAL BAR
425	4-403575	TARGA FUNZ. LEVA PERIC. MANI	WARNINGS AND FUNCTIONS LABEL
426	4216676	VOLANTINO PERNO FILETTATO	KNURLED RIM KNOB
427	9350194	RONDELLA TORRETТА	MOUNTING HEAD FIXING WASHER
428	9350197	VITE FISSAGGIO TORRETТА	MOUNTING HEAD FIXING SCREW
429	2-00129	DADO ALTO M10	HIGH NUT M10
430	2-00213	RONDELLA D.10	WASHER FOR HEX CAP SCREW M10
431	5-400922	PALO BRACCIO BANDIERA	COMPL. POST WITH SWINGING ARM
432A	5-104048	RICAMBIO PORTATARGHE (GIALLO)	PANEL WITH LABELS (YELLOW)
432B	5-104054	RICAMBIO PORTATARGHE (BLU)	PANEL WITH LABELS (BLUE)
432C	5-104053	RICAMBIO PORTATARGHE (ROSSO)	PANEL WITH LABELS (RED)
433	4-402838	TARGA PERICOLO SCOLLEGAMENTO	WARNING LABEL
434	4-402837	TARGA LEGGI MANUALE	WARNING LABEL
435	2111228	GANCIO PISTOLA	HOOK FOR AIRLINE GAUGE
436	3014095	TARGA PERICOLO 5 LINGUE	"DANGER" LABEL
501	3-00175	RACCORDO A Y 1/8" D.8	Y MALE ADAPTOR G1/8 T8
502	4207833	GUARNIZIONE OR3237(2,62X60)	O-RING 3237 (2.62x60)
503	5-400648	RACCORDO GIREVOLE	COMPLETE ROTATING UNION
504	2-00215	RONDELLA D.14	WASHER FOR HEX CAP SCREW M14
505	2-71765	DADO BASSO M14	LOW NUT M 14
506	2-01950	LINGUETTA 6X6X18	PARALLEL KEY 6X6X18
507	4-400514	PULEGGIA RIDUTT. 6 GOLE POLY-V	GEARBOX PULLEY 6J
508	5-400931	RIDUTTORE COMPLETO	GEARBOX
510	2-02113	VITE TE M10X50	HEXAGON HEAD CAP SCREW M10X50
511	3010107	VITE TRAINO RACCORDO GIREVOLE	SCREW FOR ROTATING UNION
512	3015501	TUBO RILSAN NERO 8-6 L. 600	RILSAN HOSE D.8-6 L.600
600	3013979	TARGA BOLLINO PE	PE LABEL
601	2-02239	VITE TE M8X30	HEXAGON HEAD CAP SCREW M8X30
602	2-02561	VITE STEI M8X14	SOCKET SET SCREW M8X14
603	3-00965	MOTORE 3PH 230/400V 50/60HZ	3-PHASE MOTOR 230/400V 50/60HZ
604	3016335B	SUPPORTO MOTORE	MOTOR HOLDER
605	2-01020	DADO AUTOBLOCCANTE M8	NUT WITH POLYAMIDE RING M8
606	4-400515	PULEGGIA MOTORE 6 GOLE POLY-V	MOTOR PULLEY J6

<b>Rif. Ref.</b>	<b>Codice Code</b>	<b>Descrizione</b>	<b>Description</b>
607	3-01321	CINGHIA POLY-V J6-610	<i>POLY-V BELT J6-610</i>
608	2-71967	VITE STEI M10X70	<i>SOCKET SET SCREW M10X70</i>
609	2-91726	DADO M10	<i>NUT M10</i>
610	2-02335	VITE TE M4X12	<i>HEXAGON HEAD CAP SCREW M4X12</i>
611	2-71491	VITE AUTOFILETTANTE D3,5X12,7	<i>SELF-TAPPING SCREW D.3.5X12.7</i>
612	2-00605	VITE TCIC M4X10	<i>CROSS PAN HEAD SCREW M4X10</i>
613	2-00575	VITE TCIC M3X16	<i>CROSS PAN HEAD SCREW M3X16</i>
614	2-00125	DADO ALTO M4	<i>HIGH NUT M4</i>
615	2-94059	ROSETTA ELASTICA D.4	<i>TOOTH WASHER D.4</i>
616	3005912	TARGA INVERTITORE	<i>REVERSE LABEL</i>
617	2407396D	CAVO ALIMENTAZIONE 3PH	<i>3PH FEEDING CABLE</i>
618	2407436C	CAVO COLLEG. MOTORE 3PH	<i>3PH MOTOR CONNECTING CABLE</i>
619	3014661	SUPPORTO INVERTITORE	<i>REVERSING SWITCHES SUPPORT</i>
620	3311195	PROTEZ. RIGIDA TENUTA STAGNA	<i>REVERSING SWITCHES PROTECTION</i>
621	3311196	GUARNIZIONE INVERTITORE	<i>REVERSING SWITCHES GASKET</i>
622	3394587	LEVA INVERTITORE	<i>REVERSING SWITCHES LEVER</i>
623	4213369	INVERTITORE	<i>ROTARY REVERSING SWITCHES</i>
624	5-400875	GR.INVERTITORE 1VEL.3PH.	<i>3-PH. REVERSE SWITCH + CABLES</i>
625	4-403165	GOMMINO CAVO D.6.5	<i>CABLE HOLDER D. 6,5</i>
628	2-02817	VITE TCEI M6X12	<i>SOCKET HEAD CAP SCREW M6X12</i>
629	2-00211	RONDELLA D.6	<i>WASHER FOR HEX CAP SCREW M6</i>
630	4207270	TARGA BOLLINO TERRA	<i>EARTH LABEL</i>
632	4206664	PRESSACAVO SB8R-3	<i>CABLE HOLDER SB8R-3</i>
701	2-00212	RONDELLA D.8	<i>WASHER FOR HEX CAP SCREW M8</i>
702	3-00183	SILENZIATORE-G1/8-PLASTICA	<i>SILENCER 1/8"</i>
703	4-403163	PERNO PEDALIERA	<i>PIN</i>
704	2-03538	VITE TE M4X25	<i>HEXAGON HEAD CAP SCREW M4X25</i>
705	3-00292	RACCORDO A T ORIENT. G1/8C-T8	<i>TEE MALE ADAPTOR G1/8" 8-6</i>
706	3306148	CAMMA DOPPIA	<i>TRIP CAM</i>
707	2-01272	VITE AUTOFILETTANTE D2,9X 9,5	<i>SELF-TAPPING SCREW D.2,9X9,5</i>
708	2-94064	VITE TE M6X60	<i>HEXAGON HEAD CAP SCREW M6X60</i>
709	3020178	BIELLA PEDALIERA	<i>REVERSE SWITCH CONNECTING ROD</i>
710	2-01018	DADO AUTOBLOCCANTE M4	<i>NUT WITH POLYAMIDE RING M4</i>
711	2309657	VALVOLA AUTOCENTRANTE	<i>VALVE FOR SELF CENTERING CHUCK</i>
712	3015695	PEDALIERA 2 PEDALI	<i>PEDAL BASE</i>
713	2-01257	DADO AUTOBLOCCANTE M6	<i>NUT WITH POLYAMIDE RING M6</i>
714	2406150	BIELLA CAMMA	<i>CAM CONNECTING ROD</i>
715	3015524	PERNO PEDALI	<i>PEDAL PIN</i>
716	2-02248	ROSETTA EL. D8	<i>UNDULATED SPRING WASHER D.8</i>
717	2115774	PEDALE INVERTITORE	<i>REVERSING SWITCHES PEDAL</i>
718	3009605	CAVALLOTTO GUIDA BIELLA	<i>CONNECTING ROD GUIDE BRACKET</i>
719	2409607	SUPPORTO PEDALE INVERTITORE	<i>SUPPORT FOR REVERSE PEDAL</i>
720	3-01926	FERMAGLIO SICUREZ.UNI8834 D.6	<i>SPRING PIN D. 6</i>
721	3006047	MOLLA TORSIONE	<i>HELICAL TORSION SPRING</i>
722	3006149	BALESTRA A FORCELLA	<i>FORK LEAF SPRING</i>

Rif. Ref.	Codice Code	Descrizione	Description
723	3009407	BIELLA	CONNECTING ROD
724	3009412	MOLLA TRAZIONE	TENSION SPRING
725	3009553	PEDALE SX	LEFT PEDAL
726	5-400796	PEDALIERA COMPLETA	COMPLETE PEDALS DEVICE
727	2-94020	VITE TCEI M6X18	SOCKET HEAD CAP SCREW M6X18
801	2-00126	DADO ESAGONALE ALTO M5	HIGH NUT M5
802	2-00543	VITE STEI M6X8	SOCKET SET SCREW M6X8
803	2019111	VALVOLA STALLONATORE	COMPLETE BEAD-BREAKER VALVE
804	3-00186	SILENZIATORE-G1/4	SILENCER G.1/4
805	3319106	STROZZATORE D.2	NARROWING PIECE D 2
806	2115543	PEDALE STALLONATORE	BEAD BREAKER PEDAL
807	3015540	PERNO PEDALE	PEDAL PIN
808	3015544	SUPPORTO VALVOLA	VALVE SUPPORT
809	3310066	PEDALINO	RUBBER PEDAL
810	4215545	ANELLO EL.EST. S.CAVA "G" 8X1	RETAINING RING FOR SHAFT D.8
811	2019107	PEDALIERA STALLONATORE	COMPLETE BEAD BREAKER PEDAL
812	3010470	TUBO RILSAN NERO 8-6 L. 500	RILSAN HOSE D.8-6 L.500
813	2-03443	ROSETTA ELASTICA D.8	TOOTH WASHER D.8
814	2-00032	ANELLO ELASTICO D25	RETAINING RING FOR SHAFT D.25
815	2-00036	ANELLO ELASTICO D50	RETAINING RING FOR SHAFT D. 50
816	2-01019	DADO AUTOBLOCCANTE M10	NUT WITH POLYAMIDE RING M10
817	2-02024	VITE TE M8X25	HEXAGON HEAD CAP SCREW M8X25
818	2-03301	SPINA CIL. ISO8734 A D.10X20	PARALLEL PIN ISO8734 A D.10X20
819	3-00057	RACCORDO A L 1/8 T6 ORIENTAB.	ORIENTING ELBOW FITTING 1/8 T6
820	3-00058	RACCORDO A L 1/4 T6 ORIENTAB.	ORIENTING ELBOW FITTING 1/4 T6
821	3-00181	SILENZIATORE-G1/8 FILI ACCIAIO	SILENCER G.1/8
822	3-00228	RACCORDO A L 1/8" M-F	ELBOW MALE ADAPTOR G1/8 M-F
823	3-00306	RACCORDO A T 1/4 FF	TEE MALE ADAPTOR G1/4 F-F
824	3-00476	RACCORDO DRITTO G1/8 T6	STRAIGHT MALE ADAPTOR G1/8 T.6
825	3-00478	RACCORDO DRITTO 1/4 T8	STRAIGHT MALE ADAPTOR G1/4 T.8
826	3011188	TUBO RILSAN NERO 6-4 L.1800	RILSAN HOSE D.6-4 L.1800
827	3-01359	VALVOLA A LEVA 3/3 G1/8	MANUALLY ACTUATED VALVE G1/8
828	3013640	TARGA FRECCHE CONTRAPPOSTE	DECAL, ARROWS UP-DOWN
829	3015999	TUBO RILSAN NERO 6-4 L.1160	RILSAN HOSE 6-4 1160 MM
830	3-01613	MANIGLIA A RIPRESA M10X20 L80	ADJUSTABLE LEVER M10X20 L.80
831	3019488	RASAMENTO D.50,5X60X1	WASHER 50.5X60X1
832	3-02237	TAPPO VL 50X50 X 3.5-6	PLASTIC CAP 50X50X3,5
833	3093960	TUBO RILSAN NERO 6-4 L.1250	RILSAN HOSE D.6-4 L. 1250
834	4215918	GHIERA AUTOFRENANTE M 35X1,5	SELF-LOCKING NUT
835	4-403125	CAVALLOTTO	CLIP
836	4-403126	DISTANZIALE A V	SPACER
837	4-403136	BRACCETTO ROTANTE	ROTATING ARM
838	4-403137	NASTRO	STEEL STRIP
839	4-403748	STELO D.25	SHAFT D. 25
840	4-404137	ATTACCO ARRESTO STELO	VERTICAL LOCKING PLATE

<b>Rif. Ref.</b>	<b>Codice Code</b>	<b>Descrizione</b>	<b>Description</b>
841	4-404178	MOZZO INFERIORE FILETTATO	<i>INFERIOR HUB</i>
842	4-404181	MOZZO SUPERIORE	<i>SUPERIOR HUB</i>
843	4-404216	ANELLO ARRESTO	<i>RETAINING RING</i>
844	4-404300	PERNO ARRESTO STELO	<i>LOCKING PIN</i>
845	4-404958	TAMPONE PREMITALLONE	<i>BEAD PRESSING PAD</i>
846	4-404971	SUPPORTO CILINDRO BP	<i>CYLINDER HOLDER</i>
847	4-404974	BRACCIO COMANDO L=531	<i>CONTROL ARM</i>
848	4-406112	TAMPONE CON PERNO	<i>RIM HOLE PRESSING CONE</i>
849	4-406398	STAFFA SUPPORTO ULGS	<i>ULGS HOLDER</i>
850	5-400962	VALVOLA COMANDO	<i>COMPLETE VALVE</i>
851	5-401693	CILINDRO D.100x40x120	<i>CYLINDER D.100X40X120</i>
852	2-00014	ANELLO ELAST. PER INTERNI D52	<i>RETAINING RING FOR BORE D.52</i>
853	2-00792	ANELLO ELASTICO D40	<i>RETAINING RING FOR SHAFT D.40</i>
854	2-01224	VITE TCEI M10X45	<i>SOCKET HEAD CAP SCREW M10X45</i>
855	2-80020	VITE TCEI M10X40	<i>SOCKET HEAD CAP SCREW M10X40</i>
856	3017419	RASAMENTO D.40,5X55X1	<i>WASHER 40.5X55X1</i>
857	3-01923	GUARNIZIONE OR4162(3,53X40,86)	<i>O-RING 4162 (3.53X40.86)</i>
858	3-01925	GUARN.RASCHIATORE RBP 40X50X6	<i>LIPPED GASKET RPB 40-50-6</i>
859	3-02204	GUARNIZIONE PISTONE D.100 DEF	<i>PISTON GASKET D. 100</i>
860	3-02205	ANELLO GUIDA STELO D.40 FENOLO	<i>WEAR RING FOR ROD D. 40</i>
861	4217850	GUARNIZIONE OR4362(3,53X91,67)	<i>O-RING 4362 (3.53X91.67)</i>
862	4-403119	CAMICIA D.100 ESTRUSA	<i>CASING D. 100</i>
863	4-403120A	TESTATA CILINDRO	<i>CYLINDER HEAD</i>
864	4-403121	PISTONE D.100	<i>PISTON D. 100</i>
865	4-403122	STELO CILINDRO	<i>CYLINDER SHAFT</i>
866	4-403123	FLANGIA INF. CILINDRO	<i>REAR FLANGE</i>
867	4-403124	FLANGIA SUP. CILINDRO	<i>FRONT FLANGE</i>
868	4-403140	DISTANZIALE	<i>SPACER</i>
869	4-403991	RONDELLA PLASTICA D.41x52x3	<i>PLASTIC WASHER D. 41X52X3</i>
870	4-405806	STAFFA SUPPORTO ULGS	<i>ULGS HOLDER</i>
871	5-491065	SERIE GUARNIZIONI CILINDRO	<i>SET OF GASKETS</i>
872	2-03479	MOLLA A TAZZA UNI8737-B 25 GR2	<i>DISC SPRING</i>
873	2-03505	VITE TSPEI M8X40	<i>SOCKET COUNTERSUNK SCREW M8X40</i>
874	2-03531	VITE TCEI M8X60	<i>SOCKET HEAD CAP SCREW M8X60</i>
875	2-94008	DADO ES. A. DIN980V 6S ZI M8	<i>SELF-LOCKING METAL NUT M8</i>
876	2-94130	VITE TCIC M8X25	<i>CROSS PAN HEAD SCREW M8X25</i>
877	2-94132	SPINA CIL. ISO2338 B D 8 X45	<i>PARALLEL PIN ISO2338B D.8X45</i>
878	3010435	RASAMENTO D.16,5X35X0,5	<i>WASHER 16 X 35 X 0,5</i>
879	3-03204	VOLANTINO M10X40	<i>KNURLED RIM KNOB M10X40</i>
880	4214889	QUICKLOCK D. 8	<i>QUICKLOCK D.8</i>
881	4-403346	DISTANZIALE LEVA RULLINO BPR	<i>SPACER</i>
882	4-403348	RULLINO BPR	<i>ROLLER</i>
883	4-403359	LEVA RULLINO BPR CON PERNO	<i>ROLLER LEVER WITH PIN</i>
885	4-405195	ATTACCO VOLANTINO	<i>PLATE</i>
886	4-405757	CORPO MORSETTO	<i>LOWER JAW</i>

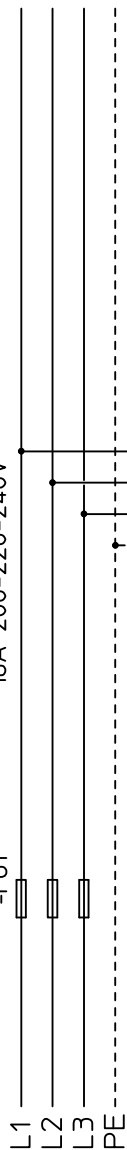
<b>Rif. Ref.</b>	<b>Codice Code</b>	<b>Descrizione</b>	<b>Description</b>
887	4-406053	AMMORTIZZATORE	<i>SHOCK ABSORBER</i>
888	4-406412	LEVA MORSETTO	<i>UPPER JAW</i>
890	4-407312	LIMITATORE STALLONATORE	<i>BEAD BREAKER STROKE-LIMITER</i>
891	4-407316	DISTANZIALE D.8.25x15x7	<i>SPACER D.8.25X15X7</i>
892	4-407321	VITE SPECIALE M16x1.5	<i>SPECIAL SCREW M16X1.5</i>
893	5-401767	PERNO ARRESTO	<i>STOP PIN</i>
894	8-11400174	BPR RULLINO PREMITALLONE	<i>BEAD PRESSING ROLLER</i>
895	8-11400227	MPG MORSETTO GRANDE	<i>BEAD PRESS. CLAMP FOR ALU RIMS</i>
896	8-11400290	PTR CODINA PER UHP	<i>ROLLERTAIL</i>
897	9462494	MOLLA A/3366	<i>COMPRESSION SPRING</i>

# SCHEMA ELETTRICO

# WIRE DIAGRAM

## 3 PH - 1 speed

Fusibili - Fuses: 10A 380-415-440V  
16A 200-220-240V



Spina e presa - Plug and socket: 16A PE

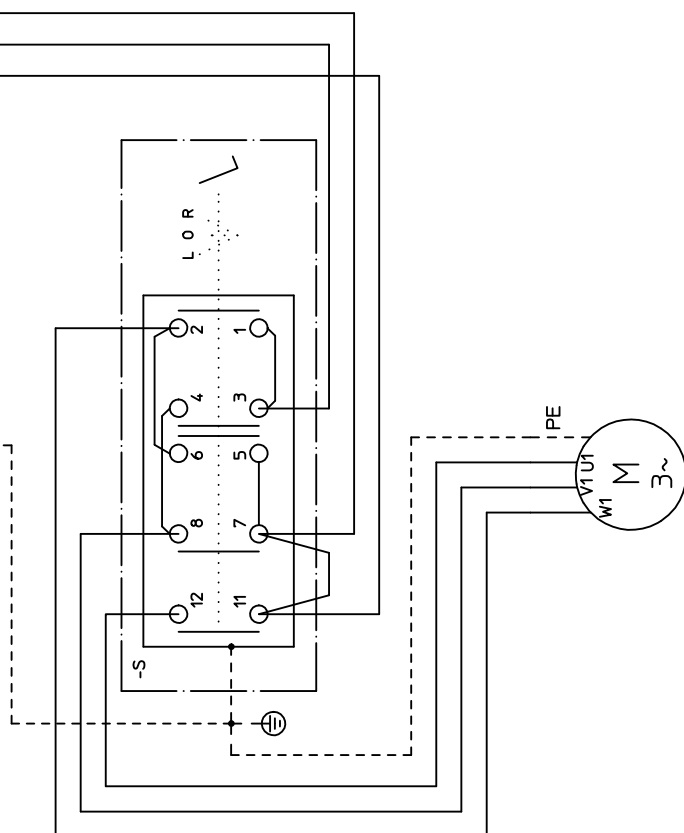
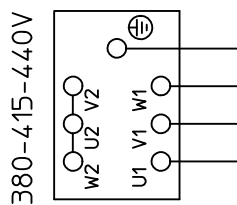
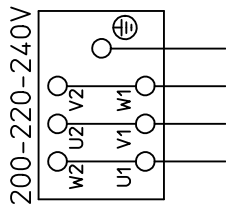
Collegamento morsetti motore per cambio tensione.  
Motor junction box connection for voltage change.

Invertitore commutatore di polarità  
Rotary reversing switches

11	12		
3			
	2	7	8
		5	6
		3	4
		1	2
L	O	R	

Elements

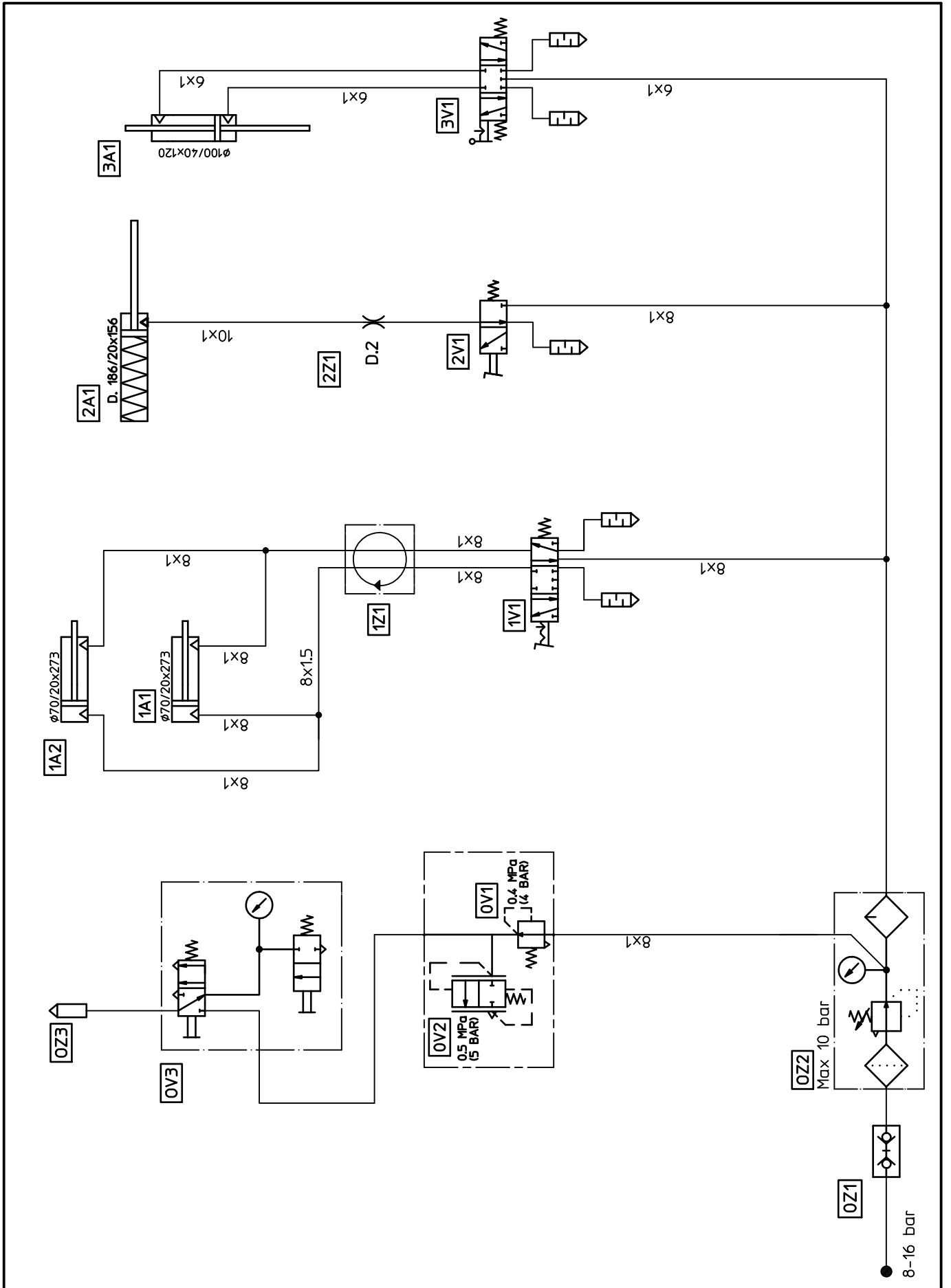
Contacts



Self-centering electric motor 0.55 kW

# SCHEMA PNEUMATICO

# PNEUMATIC DIAGRAM





Riduttore di pressione	<b>0V1</b>	<i>Pressure reducer</i>
Valvola di sicurezza	<b>0V2</b>	<i>Safety valve</i>
Pistoletta di gonfiaggio	<b>0V3</b>	<i>Tyre inflating gun-&amp;-gauge</i>
Innesto rapido maschio	<b>0Z1</b>	<i>Quick union</i>
Gruppo filtro regolatore + lubrificatore	<b>0Z2</b>	<i>Water separator and press. regulator + lubricator</i>
Testina di gonfiaggio	<b>0Z3</b>	<i>Inflating head</i>
Cilindro autocentrante	<b>1A1-1A2</b>	<i>Self-centering cylinder</i>
Valvola autocentrante	<b>1V1</b>	<i>Self-centering valve</i>
Raccordo girevole	<b>1Z1</b>	<i>Rotary union assembly</i>
Cilindro stallonatore	<b>2A1</b>	<i>Bead breaker cylinder</i>
Valvola stallonatore	<b>2V1</b>	<i>Bead breaker valve</i>
Strozzatore ø 2	<b>2Z1</b>	<i>Narrowing piece ø 2</i>
Cilindro carrello	<b>3A1</b>	<i>Carriage cylinder</i>
Valvola carrello	<b>3V1</b>	<i>Carriage valve</i>

## NOTE

## NOTE



**SICE**  
AUTOMOTIVE EQUIPMENT

**SOCIETA' ITALIANA COSTRUZIONI ELETTROMECCANICHE S.I.C.E. -S.p.A.**  
**Via Modena, 34 - 42015 CORREGGIO (RE) - ITALY**

Tel. (0522) 693640

Fax (0522) 642882

E-mail: [sice@sice.it](mailto:sice@sice.it)

Export dept.: Tel. (059) 348611

Fax (059) 359358

E-mail: [sice@atlantesrl.com](mailto:sice@atlantesrl.com)

Internet: <http://www.sice.it>